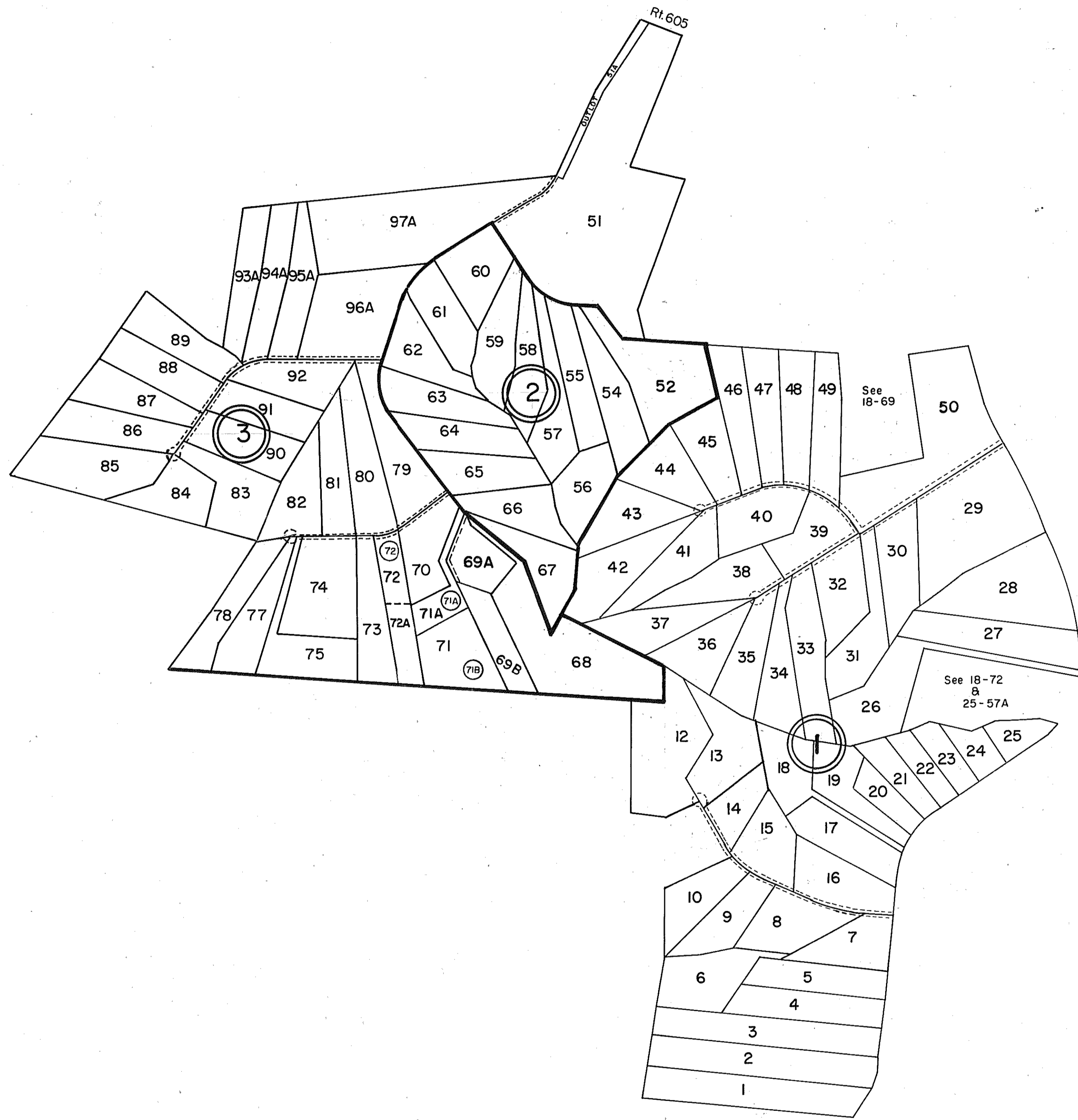


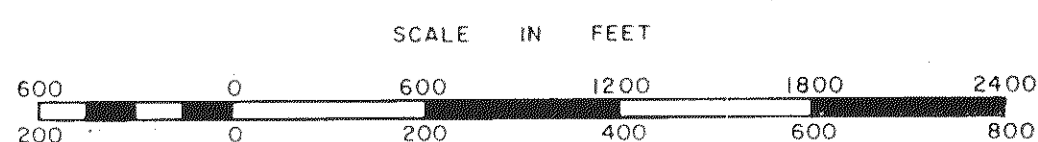
GLOUCESTER COUNTY



- ① PARRISH TRACT II
 LOTS 13 & 14 REVISED P.B. 25/731,3/4/08 & P.B.25/762, 6/23/08
 LOTS 1-19 P.B. 21, Pg.99 6/86
 LOTS 20-25 P.B. 21, Pg.97 6/86
 LOTS 26-31 & 50 P.B.21, Pg.119 7/96
 LOTS 32-49 P.B. 21, Pg.116 7/86
 TRACTS 6 & 7 REVISED P.B. 21, Pg. 416 5/87
- ② PARRISH TRACT II *REVISED LOTS 12, 12, ID/027677, PB24-321 10/24/02
 LOTS 52-67 P.B. 21, Pg.140 8/86
 REVISED LOTS 52 & 53, ID/048971, P.B.25, Pg.279 11/12/04
- ③ PARRISH TRACT II
 TRACT 51, P.B. 21, Pg. 221 10/86
 TRACTS 68-82 P.B. 21, Pg. 205
 TRACTS 83-95 P.B. 21, Pg. 203
 TRACTS 96-99 P.B. 21, Pg. 204, VACATED DB 314-528, 10/86
 TRACTS 93A-97A RESUBDIVISION OF 93-99 P.B. 21, Pg. 202 10/86
 TRACT 51 REVISED P.B. 22, Pg. 154 9/6/90
 TRACT 72 & 72A P.B. 22, Pg. 525 5/18/92
 TRACT 71 P.B. 25, Pg. 226 6/24/04

1" = 600'

12/86/87/90/92/95/97/02/03/04/08



WARE _____
 _____ DISTRICT

SECTION _____
 INSERT **18C**