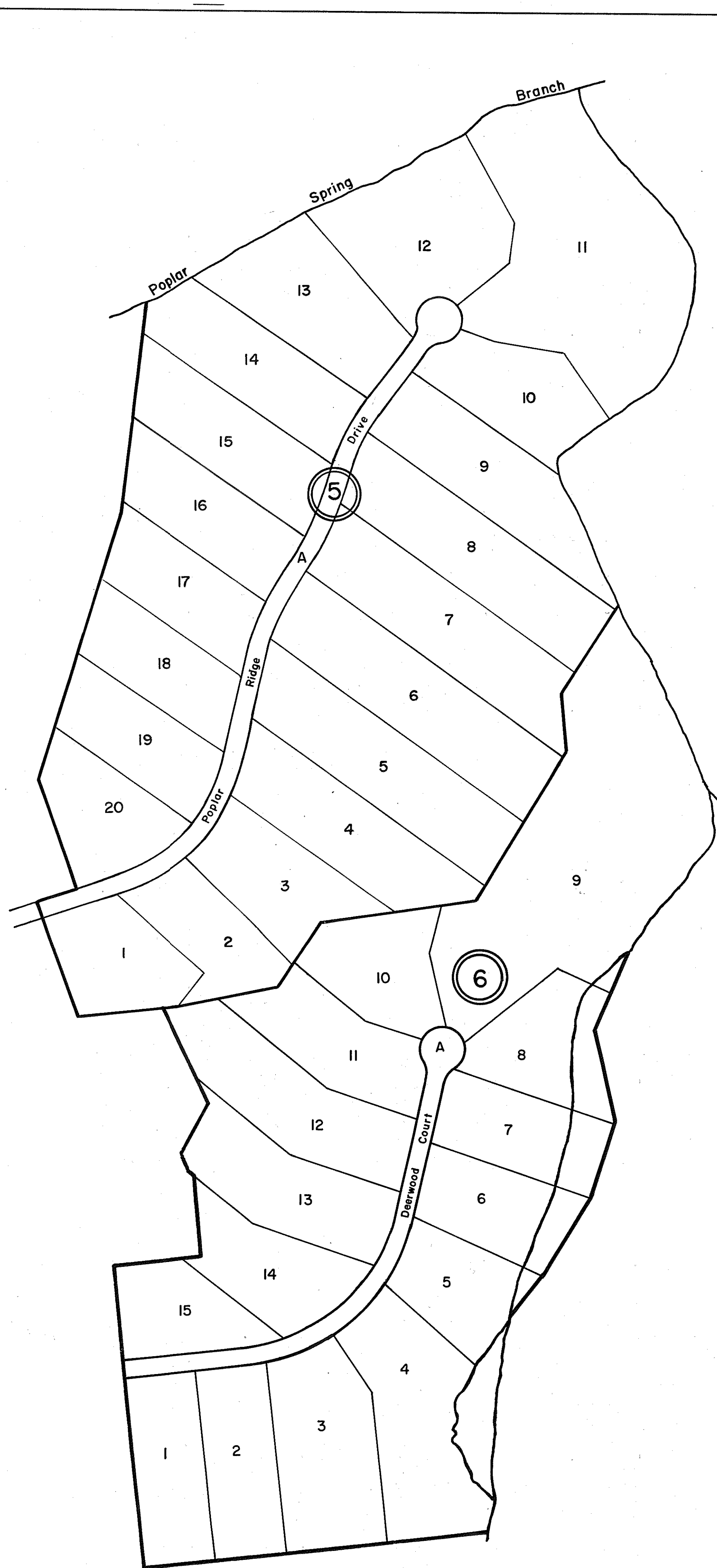
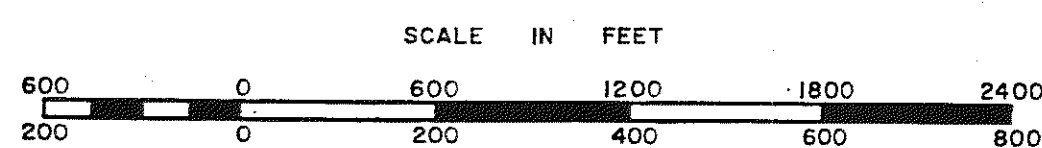


GLOUCESTER COUNTY



- ⑤ PINE MILL, Sec. Six, Lots 1-20 & R/W
P.B. 25, Pgs. 441-441B, 11/22/05
- ⑥ PINE MILL, Sec. Four, Lots 1-15 & Parcel A
P.B. 25, Pgs. 726-726B, 2/20/08



PETSWORTH
DISTRICT

SECTION
INSERT 22E-(5)-(6)