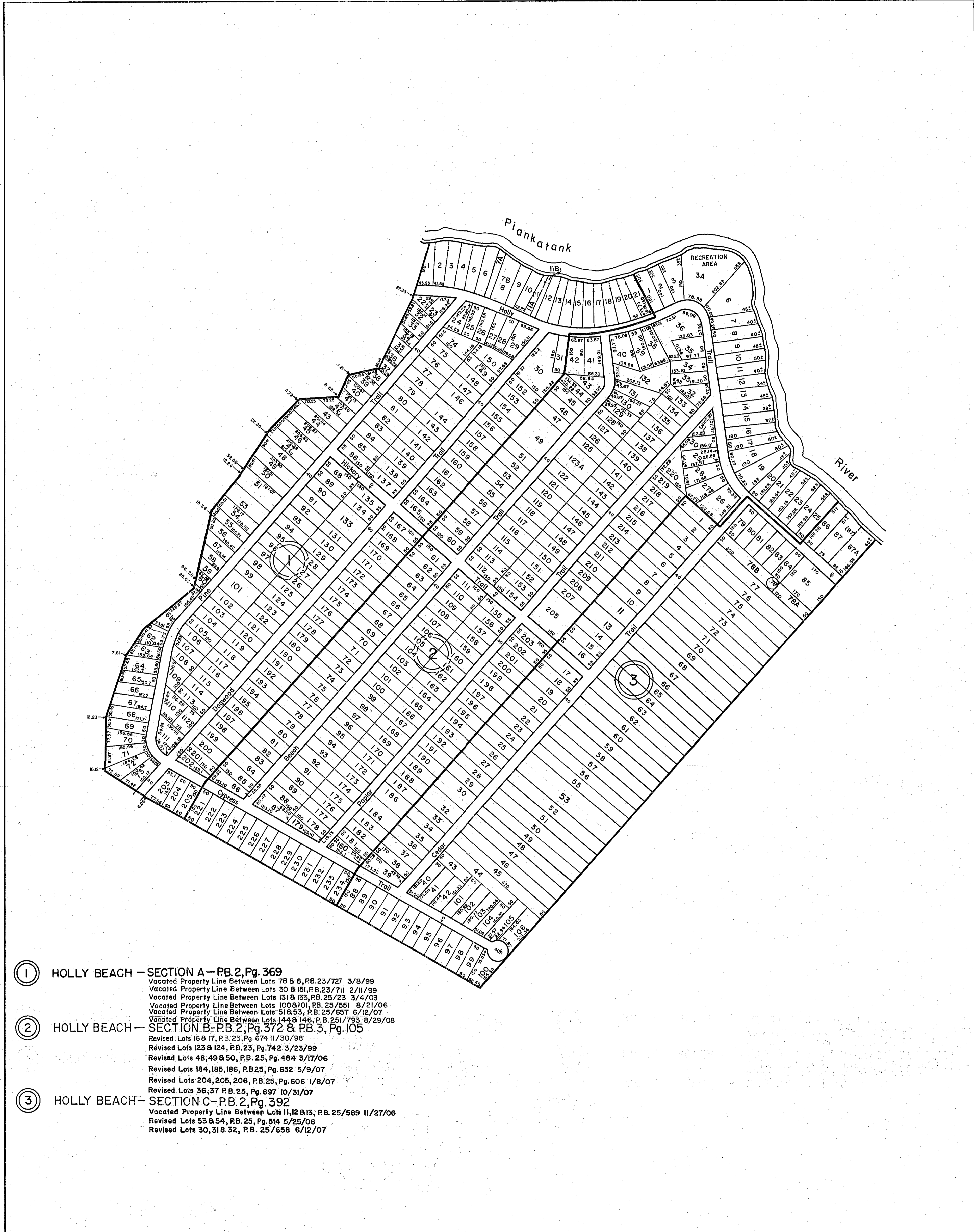


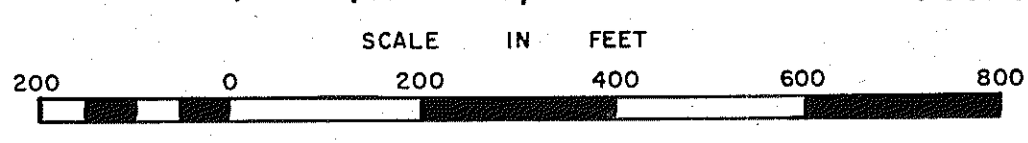
# GLOUCESTER COUNTY



- ① HOLLY BEACH — SECTION A — P.B. 2, Pg. 369  
 Vacated Property Line Between Lots 78 & 6, P.B. 23/727 3/8/99  
 Vacated Property Line Between Lots 30 & 151, P.B. 23/711 2/11/99  
 Vacated Property Line Between Lots 131 & 133, P.B. 25/23 3/4/03  
 Vacated Property Line Between Lots 100 & 101, P.B. 25/551 8/21/06  
 Vacated Property Line Between Lots 51 & 53, P.B. 25/657 6/12/07  
 Vacated Property Line Between Lots 144 & 146, P.B. 25/793 8/29/08
- ② HOLLY BEACH — SECTION B — P.B. 2, Pg. 372 & P.B. 3, Pg. 105  
 Revised Lots 16 & 17, P.B. 23, Pg. 674 11/30/98  
 Revised Lots 123 & 124, P.B. 23, Pg. 742 3/23/99  
 Revised Lots 48, 49 & 50, P.B. 25, Pg. 484 3/17/06  
 Revised Lots 184, 185, 186, P.B. 25, Pg. 652 5/9/07  
 Revised Lots 204, 205, 206, P.B. 25, Pg. 606 1/8/07  
 Revised Lots 36, 37 P.B. 25, Pg. 697 10/31/07
- ③ HOLLY BEACH — SECTION C — P.B. 2, Pg. 392  
 Vacated Property Line Between Lots 11, 12 & 13, P.B. 25/589 11/27/06  
 Revised Lots 53 & 54, P.B. 25, Pg. 514 5/25/06  
 Revised Lots 30, 31 & 32, P.B. 25/658 6/12/07

REV. 1/63, 12/75, 3/25/80, 12/31/83/84/92/98/99/00/03/06/07/08

VA. STATE DEPT. OF TAXATION, DIVISION OF REAL ESTATE APPRAISAL AND MAPPING



PETSWORTH DISTRICT

INSERT 6A