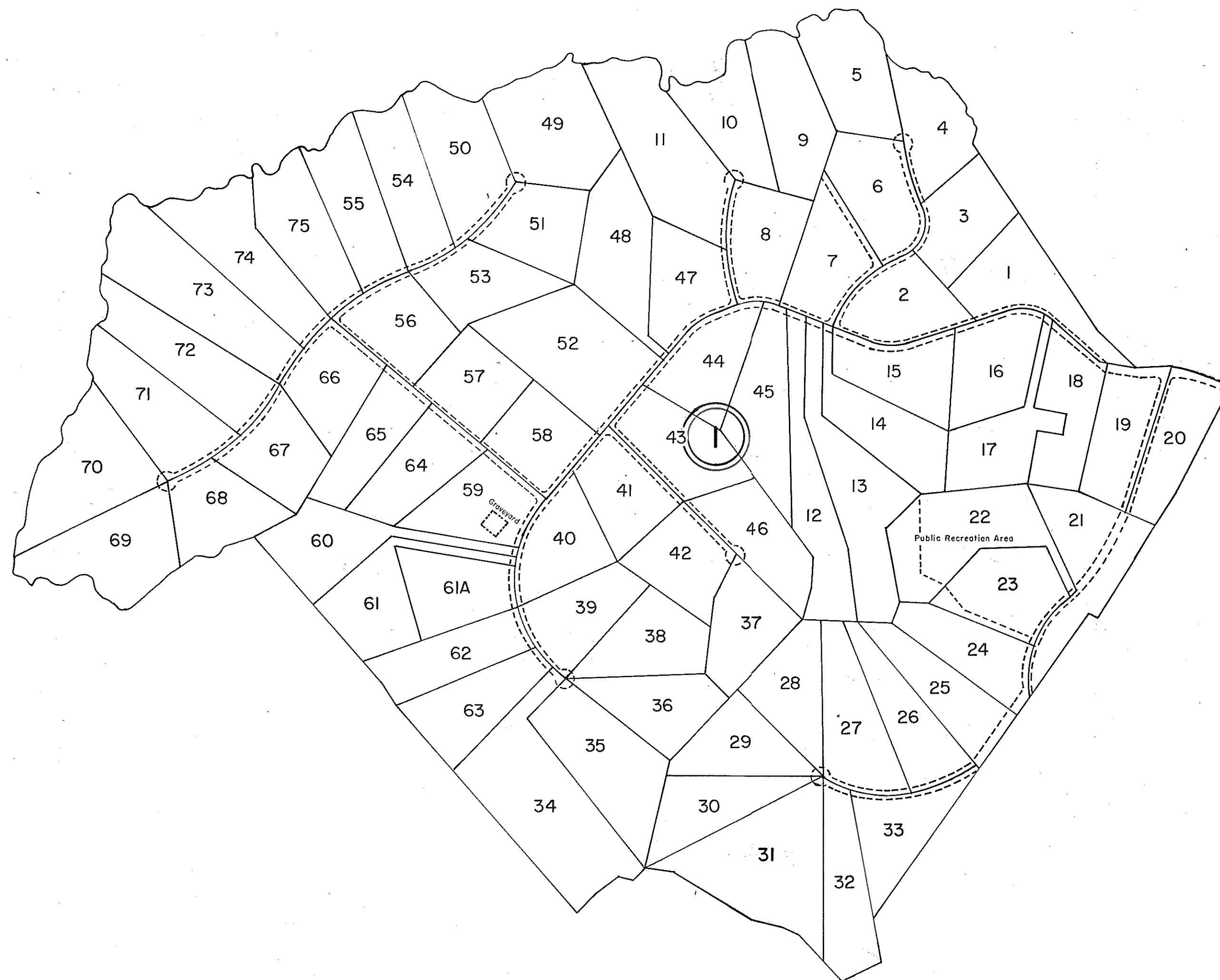
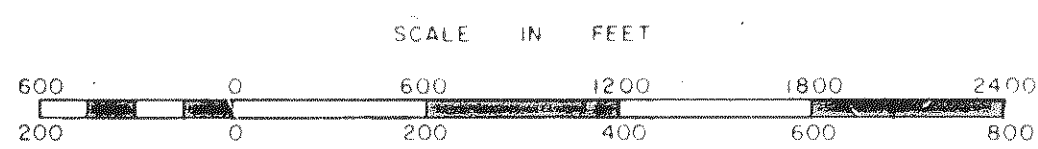


GLOUCESTER COUNTY



① LEE'S NECK FARM
 LOTS 1-75 PB.20 - Pgs.1064 & 1064A
 9-16-85
 LOT 50 revised 10/2/87 PB.21, Pg. 539
 LOT 30A & 31 revised 3/30/04 PB. 25/183
 Lots 32 & 33 Revised 3/28/06 PB.25, Pgs. 488 & 488A
 Lot 20 Revised 8/22/07 PB.25, Pg. 676

SCALE 1" = 600'
 12/85/87/92/04/06/07



PETSWORTH DISTRICT

SECTION
 INSERT 8C

REVISED:

K&E C.T. 19 1153 10-72 52945D

PREPARED BY VIRGINIA STATE DEPARTMENT OF TAXATION, DIVISION OF REAL ESTATE APPRAISAL AND MAPPING