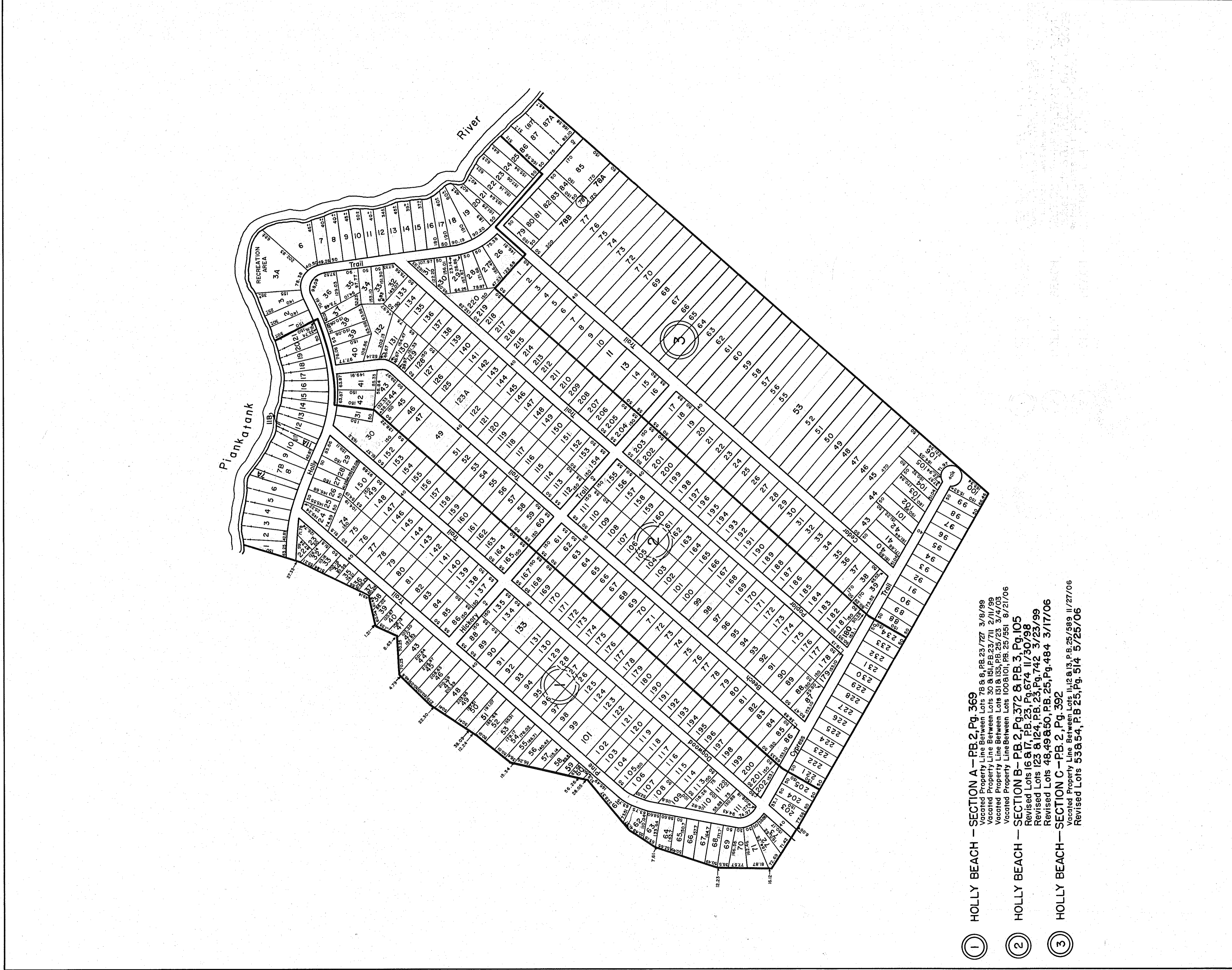


GLOUCESTER COUNTY



- ① HOLLY BEACH — SECTION A — PB 2, Pg. 369
Vacated Property Line Between Lots 78 & 6, PB. 23/727 3/18/99
Vacated Property Line Between Lots 30 & 151, PB. 23/711 2/11/99
Vacated Property Line Between Lots 131 & 133, PB. 25/23 3/4/03
Vacated Property Line Between Lots 100 & 101, PB. 25/551 8/21/06
- ② HOLLY BEACH — SECTION B — PB. 2, Pg. 372 & PB. 3, Pg. 105
Revised Lots 16, 8, 17, PB. 23, Pg. 674 II, 30/98
Revised Lots 123 & 124, PB. 23, Pg. 742 3/23/99
- ③ HOLLY BEACH — SECTION C — PB. 2, Pg. 392
Vacated Property Line Between Lots 11, 12 & 13, PB. 25/589 II, 27/05
Revised Lots 538, 54, PB. 25, Pg. 514 5/25/06

REV. 1/63, 12/75, 3/25/80, 12/31/83, 8/4/92/98/99/00/03/06



PETSWORTH DISTRICT

VA. STATE DEPT. OF TAXATION, DIVISION OF REAL ESTATE APPRAISAL AND MAPPING

INSERT 6A