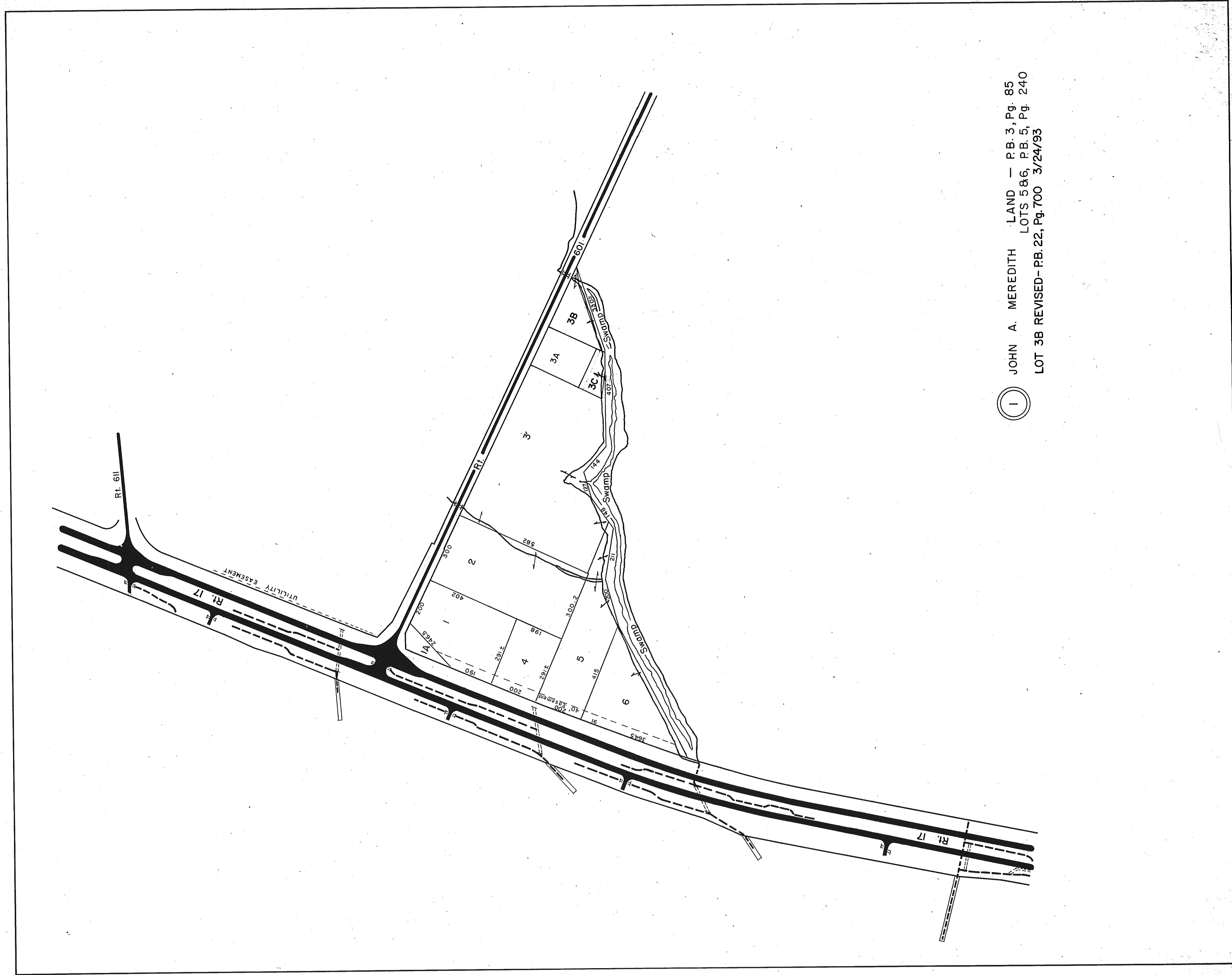
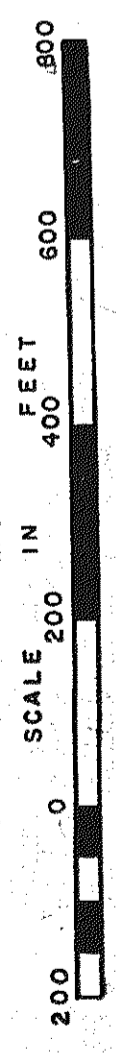


GLOUCESTER COUNTY



① JOHN A. MEREDITH LAND - P.B. 3, Pg. 85
LOTS 586, P.B. 5, Pg. 240
LOT 3B REVISED- P.B. 22, Pg. 700 3/24/93

REV. 1/63-9/8/71-REV. 12/75, 12/31/83/84/92/93



PETSWORTH DISTRICT

VA. STATE DEPT. OF TAXATION, DIVISION OF REAL ESTATE APPRAISAL AND MAPPING

INSERT 8A