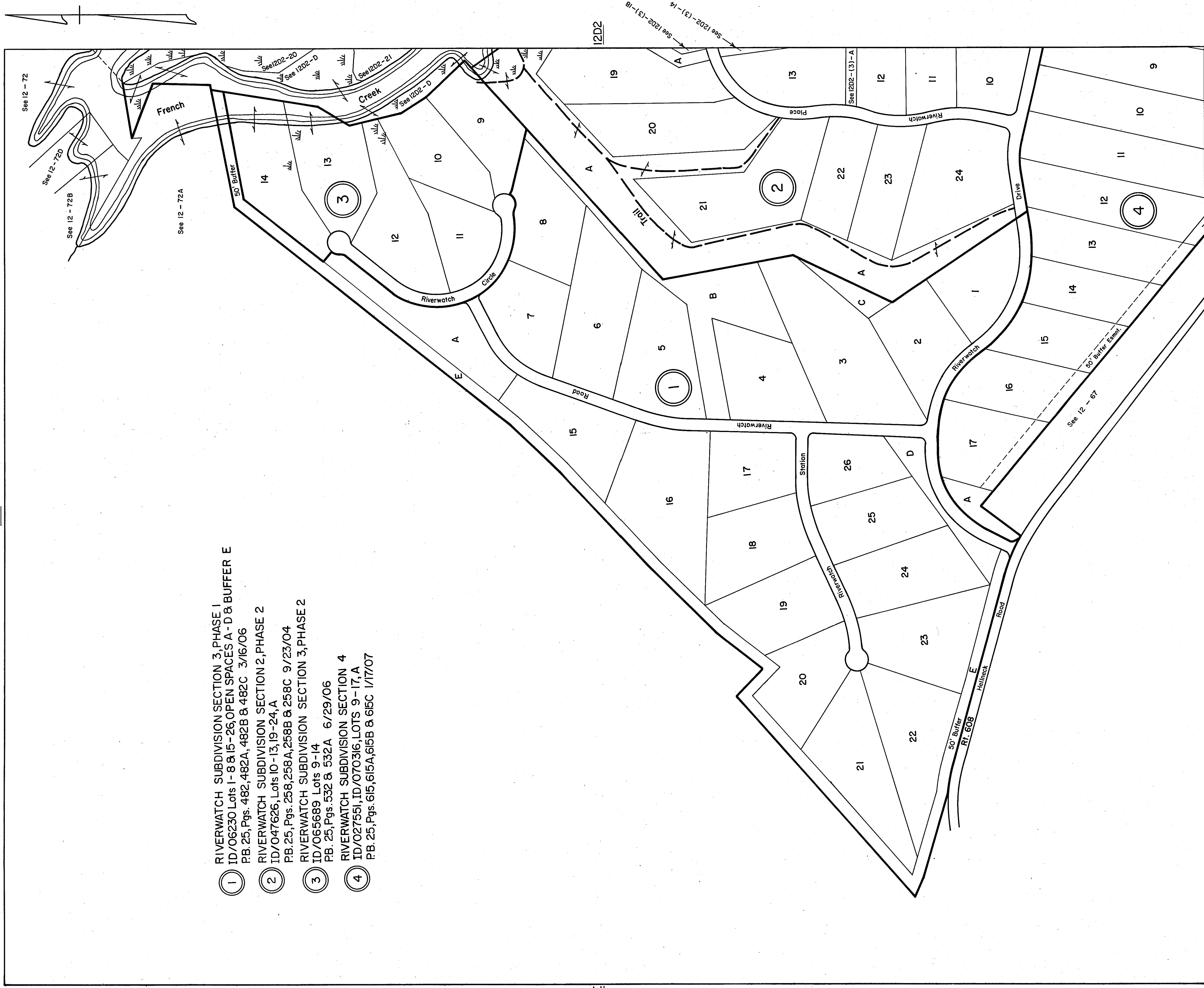


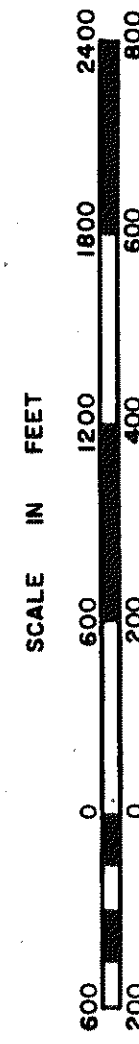
GLOUCESTER COUNTY

NONE

- ① RIVERWATCH SUBDIVISION SECTION 3, PHASE 1
ID/06230 Lots 1-8 & 15-26, OPEN SPACES A-D & BUFFER E
PB. 25, Pgs. 482, 482A, 482B & 482C 3/16/06
- ② RIVERWATCH SUBDIVISION SECTION 2, PHASE 2
ID/047626, Lots 10-13, 19-24, A
PB. 25, Pgs. 258, 258A, 258B & 258C 9/23/04
- ③ RIVERWATCH SUBDIVISION SECTION 3, PHASE 2
ID/065689 Lots 9-14
PB. 25, Pgs. 532 & 532A 6/29/06
- ④ RIVERWATCH SUBDIVISION SECTION 4
ID/027551, ID/070316, LOTS 9-17, A
PB. 25, Pgs. 615, 615A, 615B & 615C 1/17/07



NONE



PETSWORTH DISTRICT

12D3

SECTION
INSERT 12D1