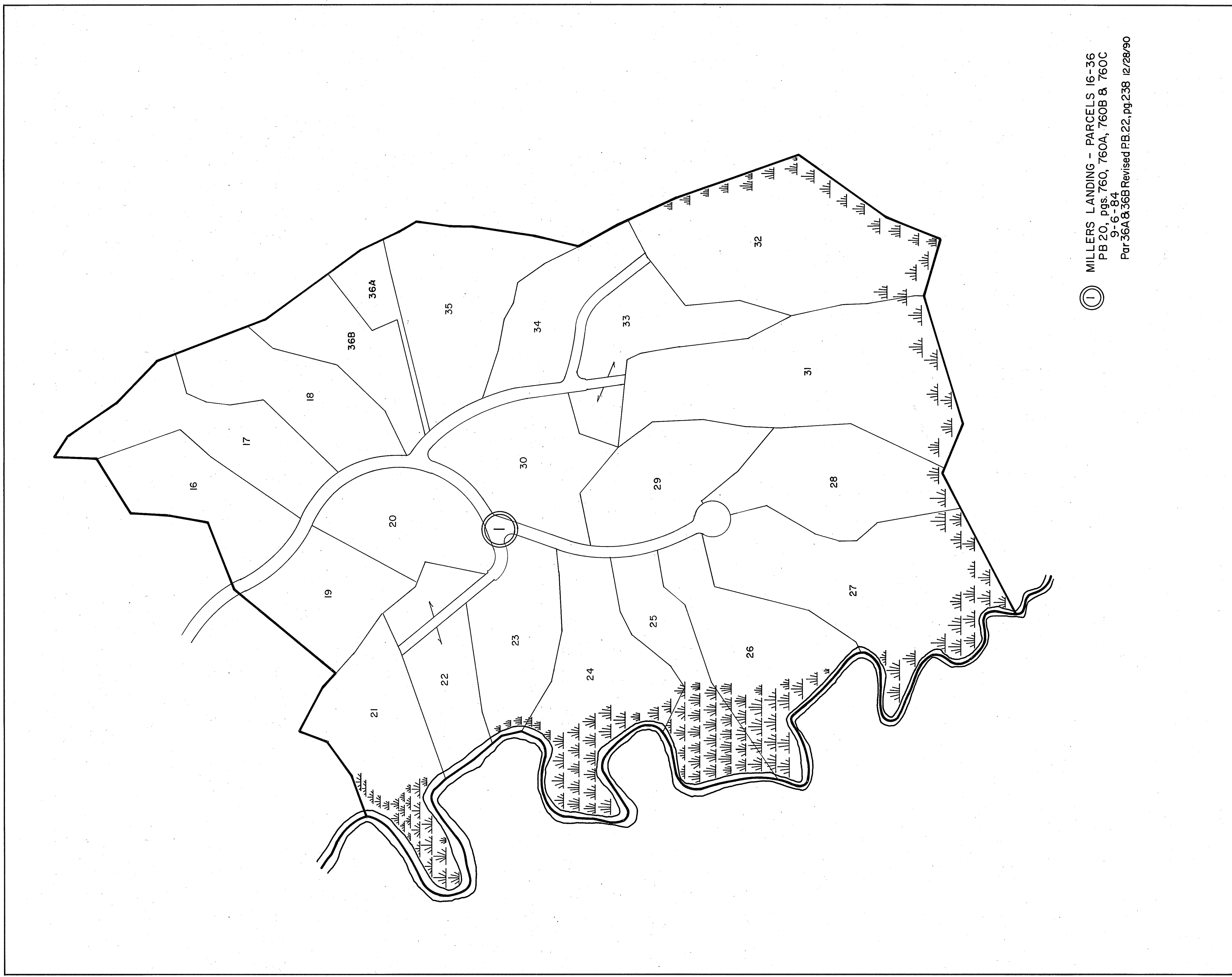
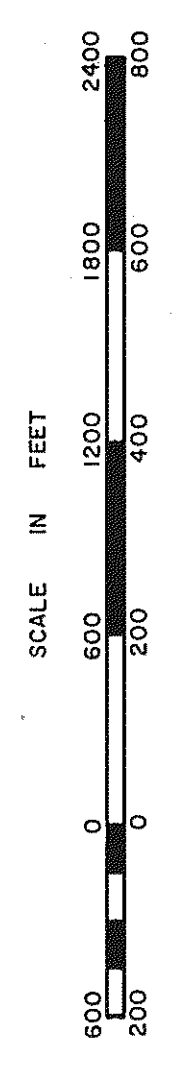


GLoucester COUNTY



① MILLERS LANDING - PARCELS 16-36
PB 20, pgs. 760, 760A, 760B & 760C
9-6-84
Par 36A & 36B Revised PB.22, pg.238 12/28/90



PEISWORTH DISTRICT

SECTION
INSERT 15C

REVISED: 12/31/84/90/92

PREPARED BY VIRGINIA STATE DEPARTMENT OF TAXATION, DIVISION OF REAL ESTATE APPRAISAL AND MAPPING