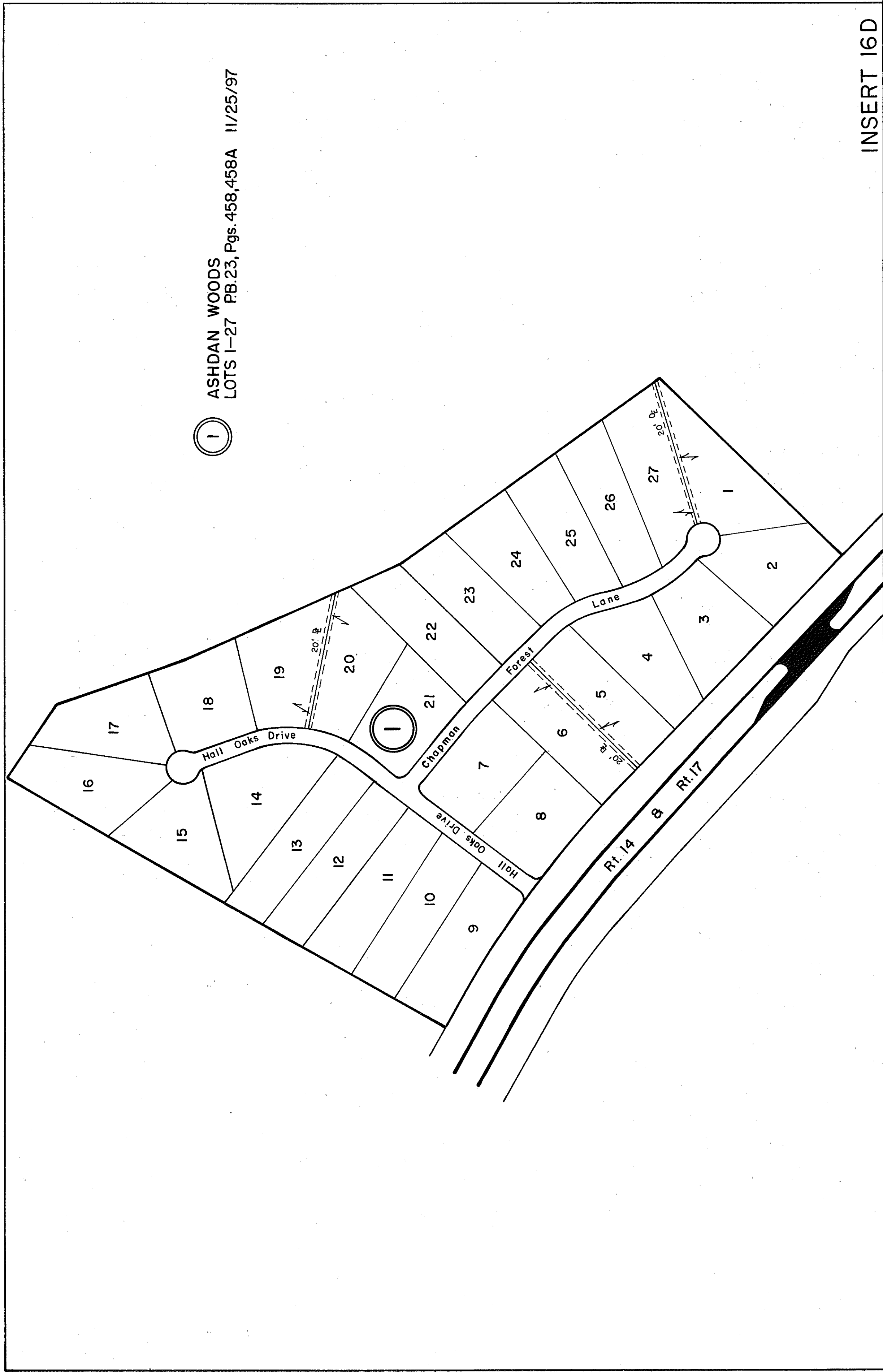


GLOUCESTER COUNTY



① ASHDAN WOODS
LOTS 1-27 PB.23, Pgs. 458, 458A 11/25/97

INSERT 16D



PETSWORTH DISTRICT

SECTION 16D
INSERT

REVISED: 11/97

PREPARED BY VIRGINIA STATE DEPARTMENT OF TAXATION, DIVISION OF REAL ESTATE APPRAISAL AND MAPPING