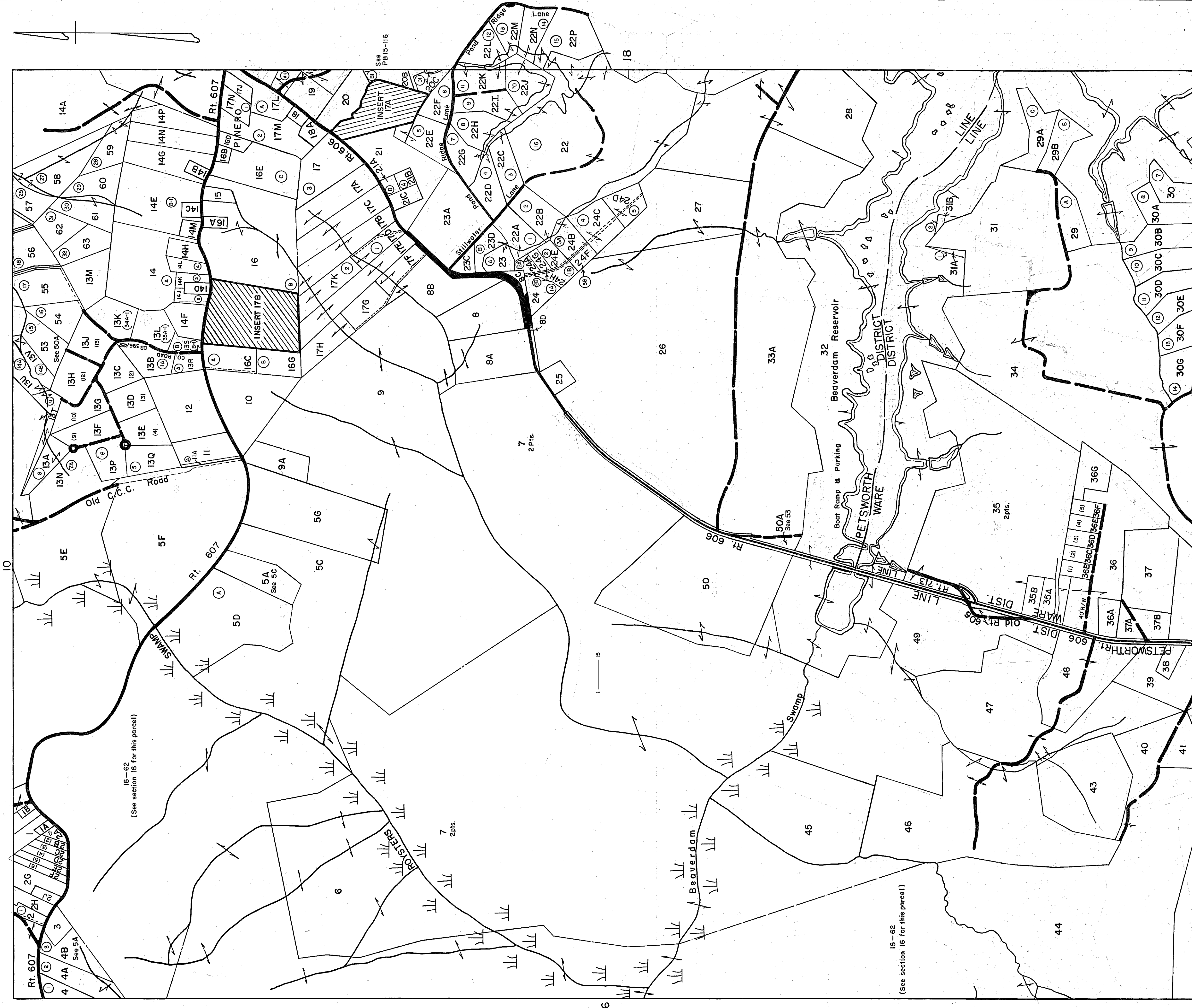


GLOUCESTER COUNTY



REV. 1/63; 12/75; 3/25/80; 12/31/83; 84/85/86/87/88/89/90/91/92/93/94/95/97/98/99/00/01/02/24/03/04/06

SCALE IN FEET



PETSORTH & WARE DISTRICTS

SECTION 17

VIRGINIA STATE DEPARTMENT OF TAXATION DIVISION OF REAL ESTATE APPRAISAL AND MAPPING