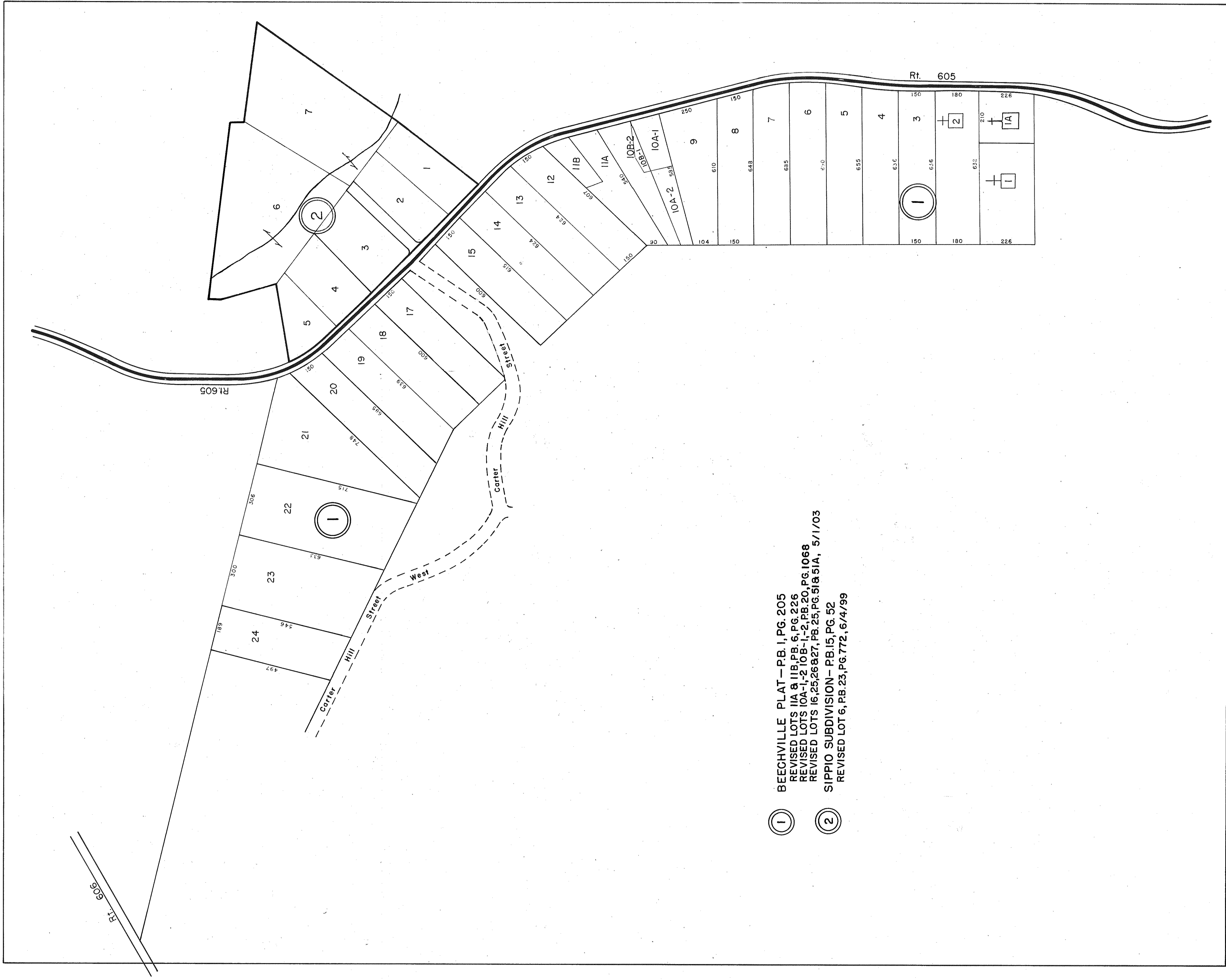


GLOUCESTER COUNTY



- ① BEECHVILLE PLAT - PB. 1, PG. 205
REVISED LOTS IIA & IIB, PB. 6, PG. 226
REVISED LOTS IOA-1, 2 IOB-1, 2, PB. 20, PG. 1068
REVISED LOTS 16, 25, 26 & 27, PB. 25, PG. 518 & 51A, 5/1/03
- ② SIPPION SUBDIVISION - PB. 15, PG. 52
REVISED LOT 6, PB. 23, PG. 772, 6/4/99

REV. 1/63, 3/25/80, 12/31/83/84/85/86/88/91/92/99/03

SCALE IN FEET



PETSWORTH DISTRICT

INSERT 18A