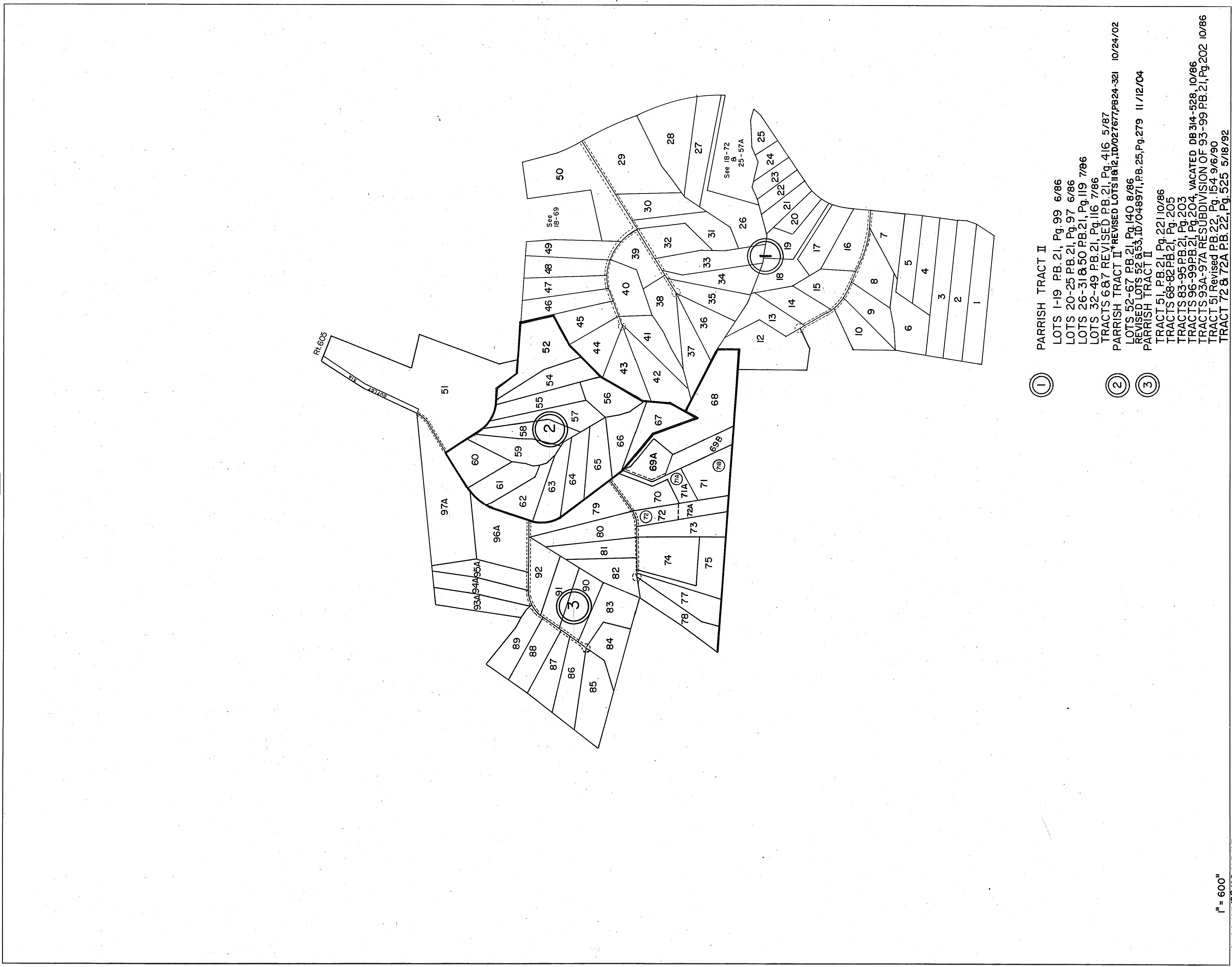


GLoucester COUNTY



①

PARRISH TRACT II

LOTS 1-19 PB.21, Pg.99 6/86
 LOTS 20-25 PB.21, Pg.97 6/86
 LOTS 26-31 & 50 PB.21, Pg.119 7/86
 LOTS 32-49 PB.21, Pg.116 7/86

TRACTS 68.7 REVISED PB.21, Pg.416 5/87
 PARRISH TRACT II REVISED LOTS 11 & 12, ID#027677, PB24-321 10/24/02
 LOTS 52-67 PB.21, Pg.140 8/86
 REVISED LOTS 52 & 53, ID#048971, PB.25, Pg.279 11/12/04
 PARRISH TRACT II

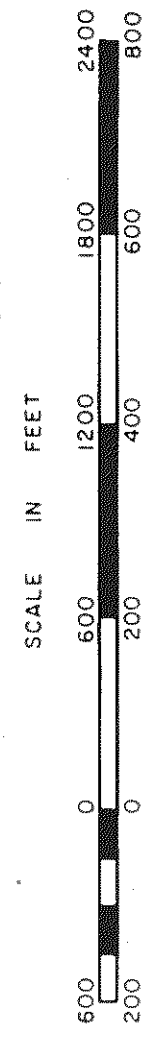
②

TRACT 51, PB.21, Pg.221 10/86
 TRACTS 68-82 PB.21, Pg.205

TRACTS 83-95 PB.21, Pg.203
 TRACTS 96-99 PB.21, Pg.204, VACATED DB 314-528, 10/86
 TRACTS 93A-97A RESUBDIVISION OF 93-99 PB.21, Pg.202 10/86
 TRACT 51 Revised PB.22, Pg.154 9/6/90
 TRACT 72 & 72A PB.22, Pg.525 5/18/92
 TRACT 71 PB.25, Pg.226 6/24/04

③

12/86/87/90/92/95/97/02/03/04
 1" = 600'



WARE _____ DISTRICT _____

SECTION _____
 INSERT **18C**