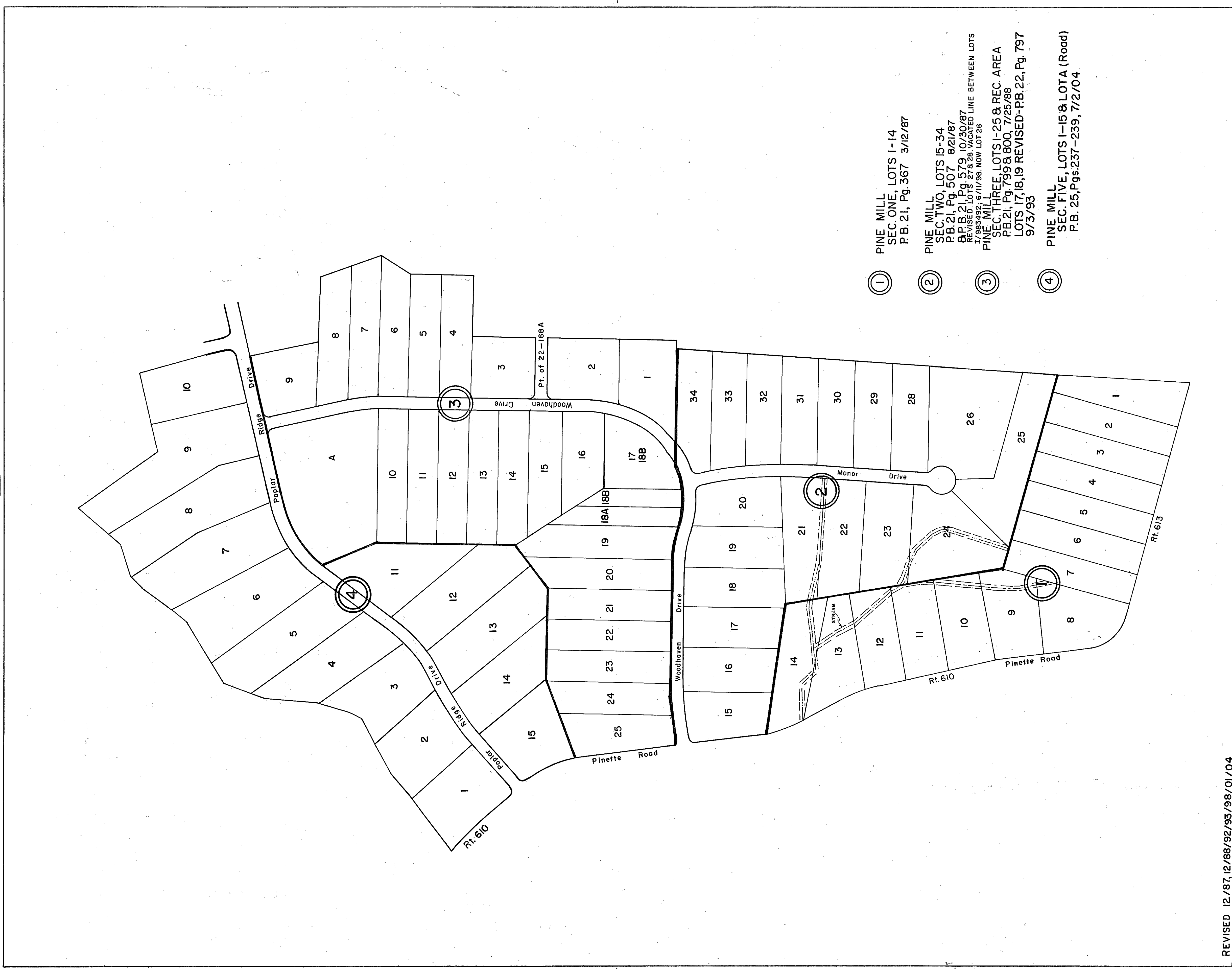


GLOUCESTER COUNTY



①

PINE MILL
SEC. ONE, LOTS 1-14
P.B. 21, Pg. 367 3/12/87

②

PINE MILL
SEC. TWO, LOTS 15-34
P.B. 21, Pg. 507 8/21/87
P.B. 21, Pg. 579 10/30/87
REVISED LOTS 27 & 28. VACATED LINE BETWEEN LOTS
17/98-492, 6/11/99. NOW LOT 26

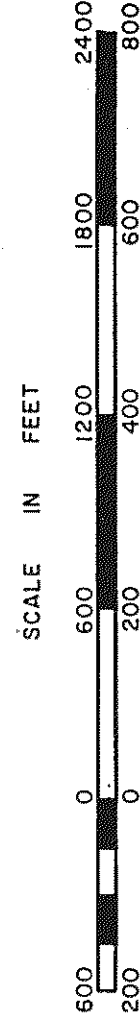
③

PINE MILL
SEC. THREE, LOTS 1-25 & REC. AREA
P.B. 21, Pg. 799 & 800, 7/25/88
LOTS 17, 18, 19 REVISED-P.B. 22, Pg. 797
9/3/93

④

PINE MILL
SEC. FIVE, LOTS 1-15 & LOTA (Road)
P.B. 25, Pgs. 237-239, 7/2/04

REVISED 12/87, 12/88/92/93/98/01/04



PETSWORTH DISTRICT

SECTION 22E
INSERT