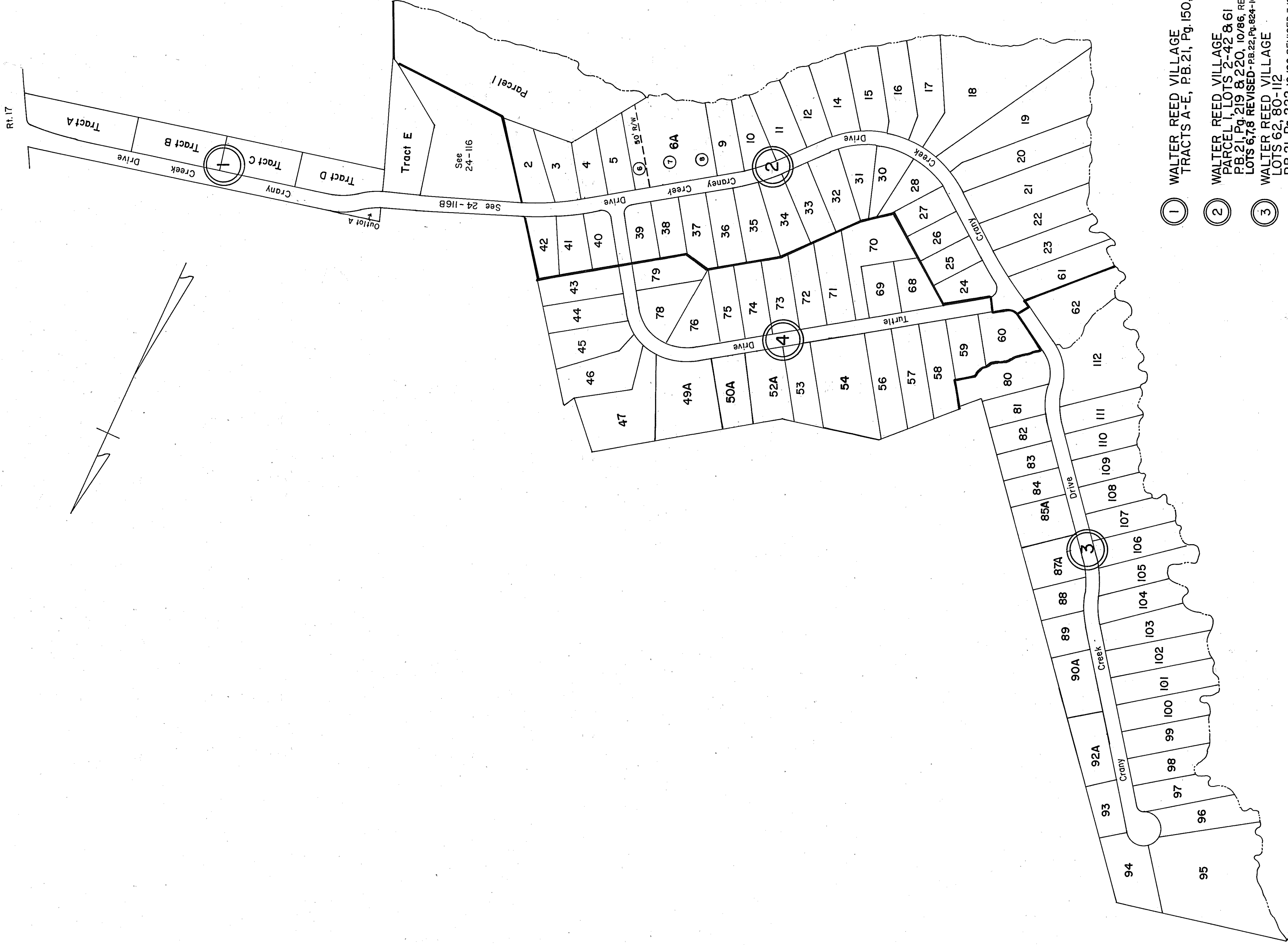
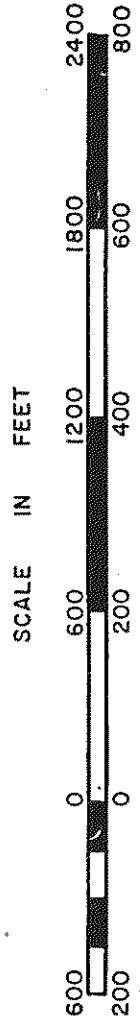


GLoucester County



- ① WALTER REED VILLAGE TRACTS A-E, P.B.21, Pg.150, 8/86
- ② WALTER REED VILLAGE PARCEL I, LOTS 2-42 & 61 P.B.21, Pg.219 & 220, 10/86, REVISED P.B.21, Pgs.379 & 380, 3/87 LOTS 6,7,8 REVISED-P.B.22, Pg.824-10/13/93 379A, 3/87
- ③ WALTER REED VILLAGE LOTS 62, 80-112 P.B.21, Pg.222, 10/86, REVISED 3/87, P.B.21, Pg.381-LOTS 85-87 REVISED-P.B.22, Pg.742-5/27/93 LOTS 90A,92A REVISED P.B.22, Pg.874 4/18/94
- ④ WALTER REED VILLAGE LOTS 43-60 & 68-79 P.B.21, Pg.223, 10/86, REVISED 3/87, P.B.21, Pg.380 LOTS 48-52 REVISED-P.B.22, Pg.687-3/11/93 Revised Lots 54 & 55, ID/0355622, 6/26/03 Revised Lots 47, 48A, 49A, P.B.25/545, 8/4/06

REVISED 12/87/92/93/94/03/06



WARE DISTRICT

SECTION INSERT 24H