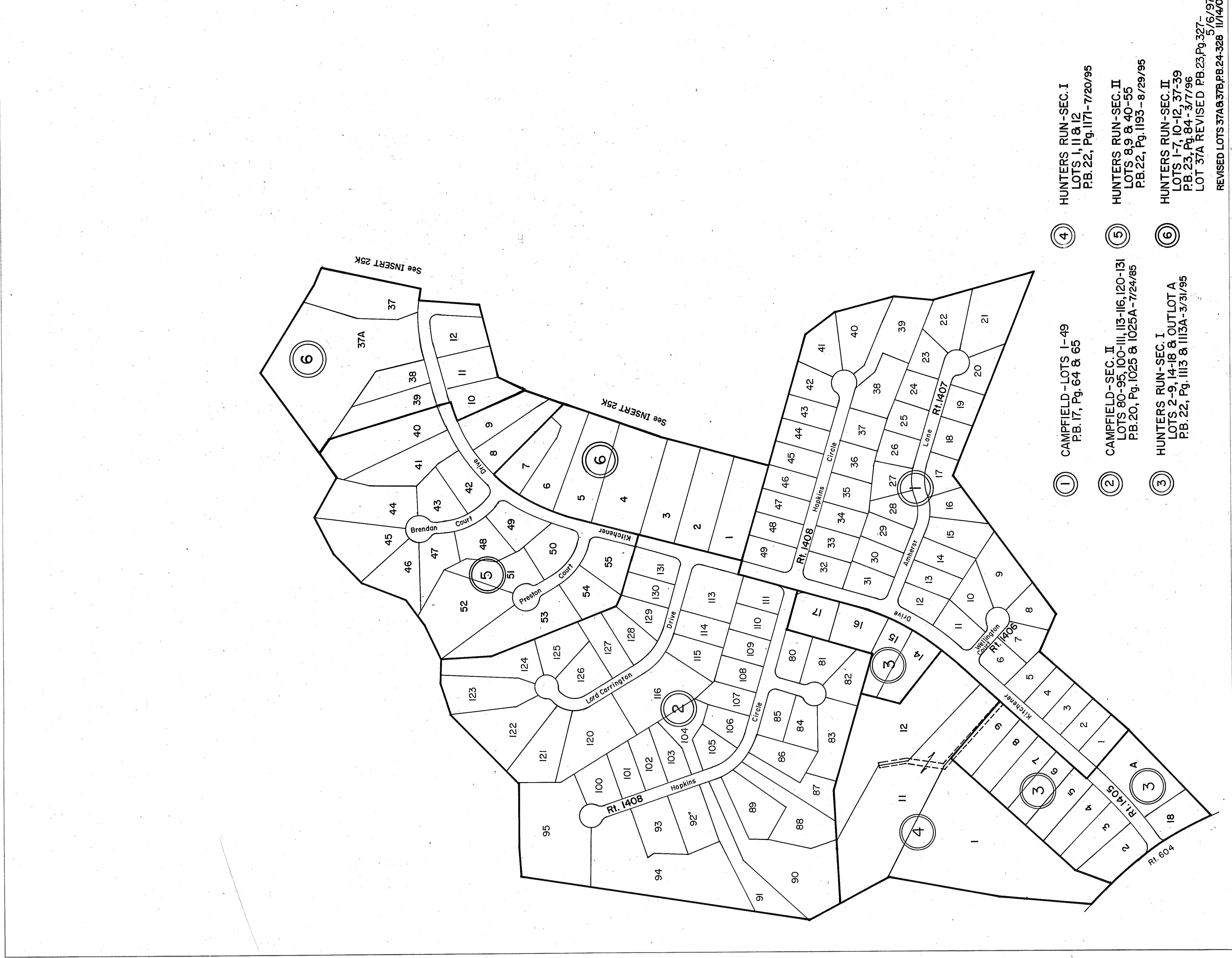
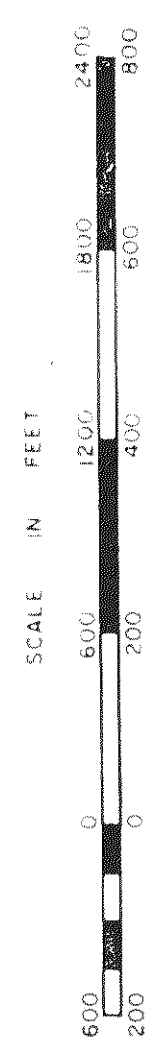


GLOUCESTER COUNTY



- ① CAMPFIELD - LOTS 1-49  
P.B. 17, Pg. 64 & 65
- ② CAMPFIELD - SEC. II  
LOTS 80-95, 100-III, 113-116, 120-131  
P.B. 20, Pg. 1025 & 1025A-7/24/85
- ③ HUNTERS RUN - SEC. I  
LOTS 2-9, 14-18 & OUTLOT A  
P.B. 22, Pg. 1113 & 1115A-3/31/95
- ④ HUNTERS RUN - SEC. I  
LOTS 1, 11 & 12  
P.B. 22, Pg. 1171-7/20/95
- ⑤ HUNTERS RUN - SEC. II  
LOTS 8, 9 & 40-55  
P.B. 22, Pg. 1193-8/29/95
- ⑥ HUNTERS RUN - SEC. II  
LOTS 1-7, 10-12, 37-39  
P.B. 23, Pg. 84-3/7/96  
LOT 37A REVISED P.B. 23, Pg. 327-5/6/97  
REVISED LOTS 37A & 37B, P.B. 24-328 11/14/02



WARE \_\_\_\_\_ DISTRICT \_\_\_\_\_

SECTION \_\_\_\_\_  
INSERT **25F**