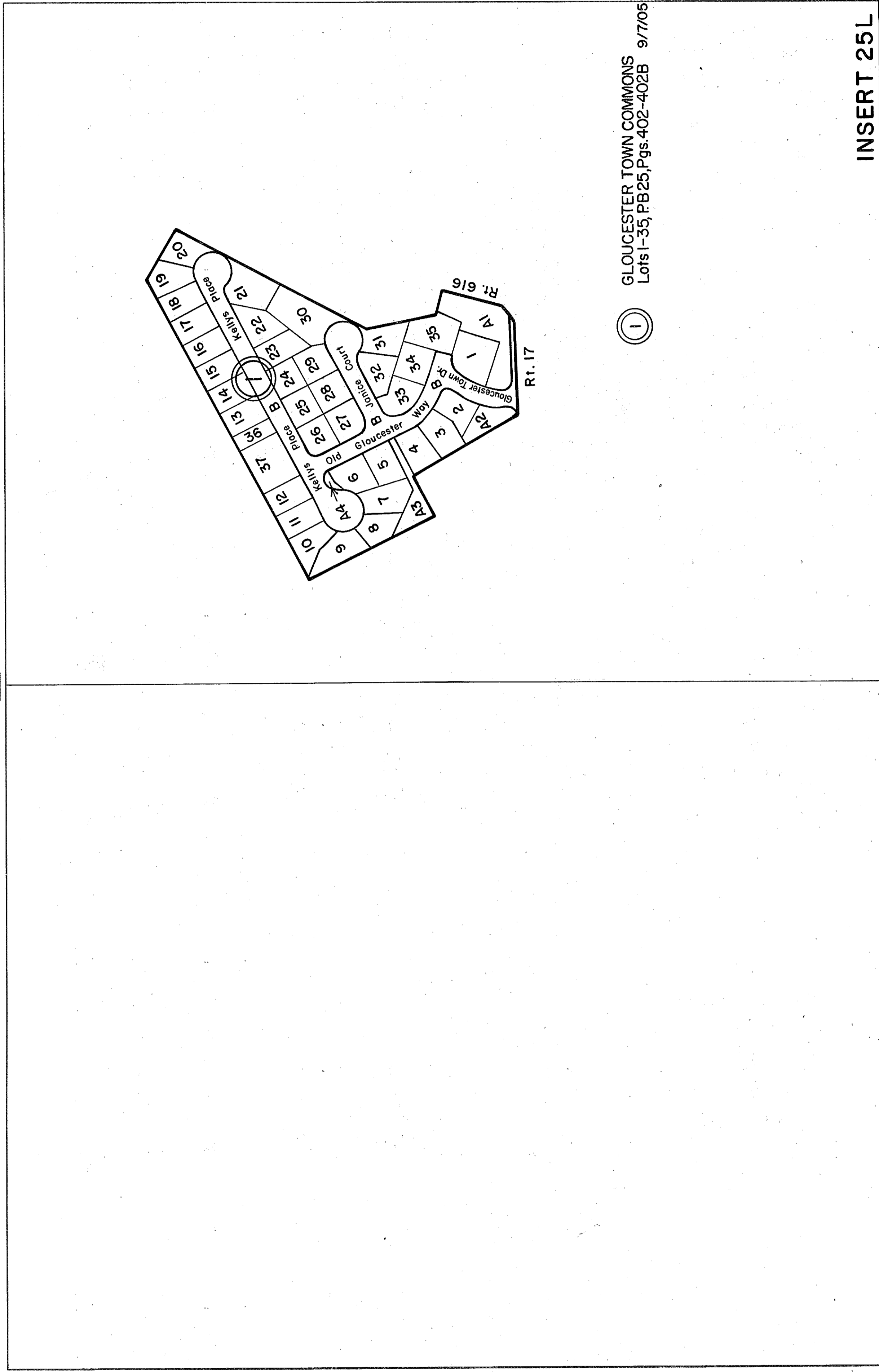
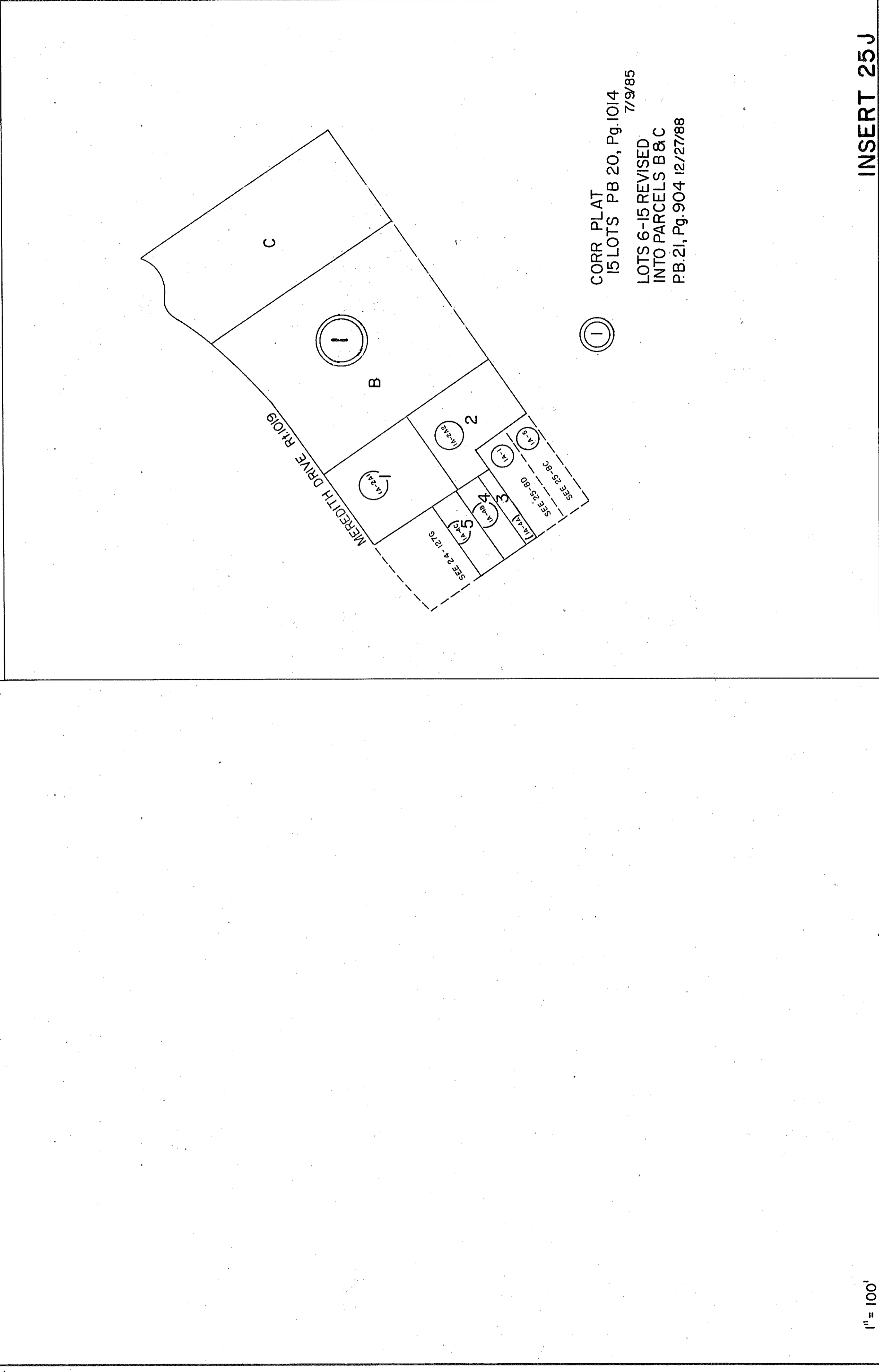


GLoucester COUNTY



① GLoucester TOWN COMMONS
 Lots 1-35, PB25, Pgs. 402-402B 9/7/05

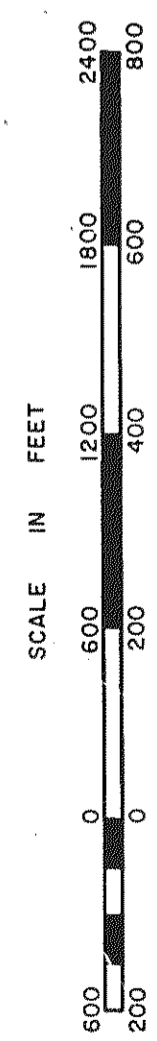
INSERT 25L



① CORR PLAT
 15 LOTS PB 20, Pg. 1014 7/9/85
 LOTS 6-15 REVISED
 INTO PARCELS B & C
 PB. 21, Pg. 904 12/27/88

1" = 100'

INSERT 25J



WARE _____ DISTRICT _____

SECTION _____
 INSERT 25JL