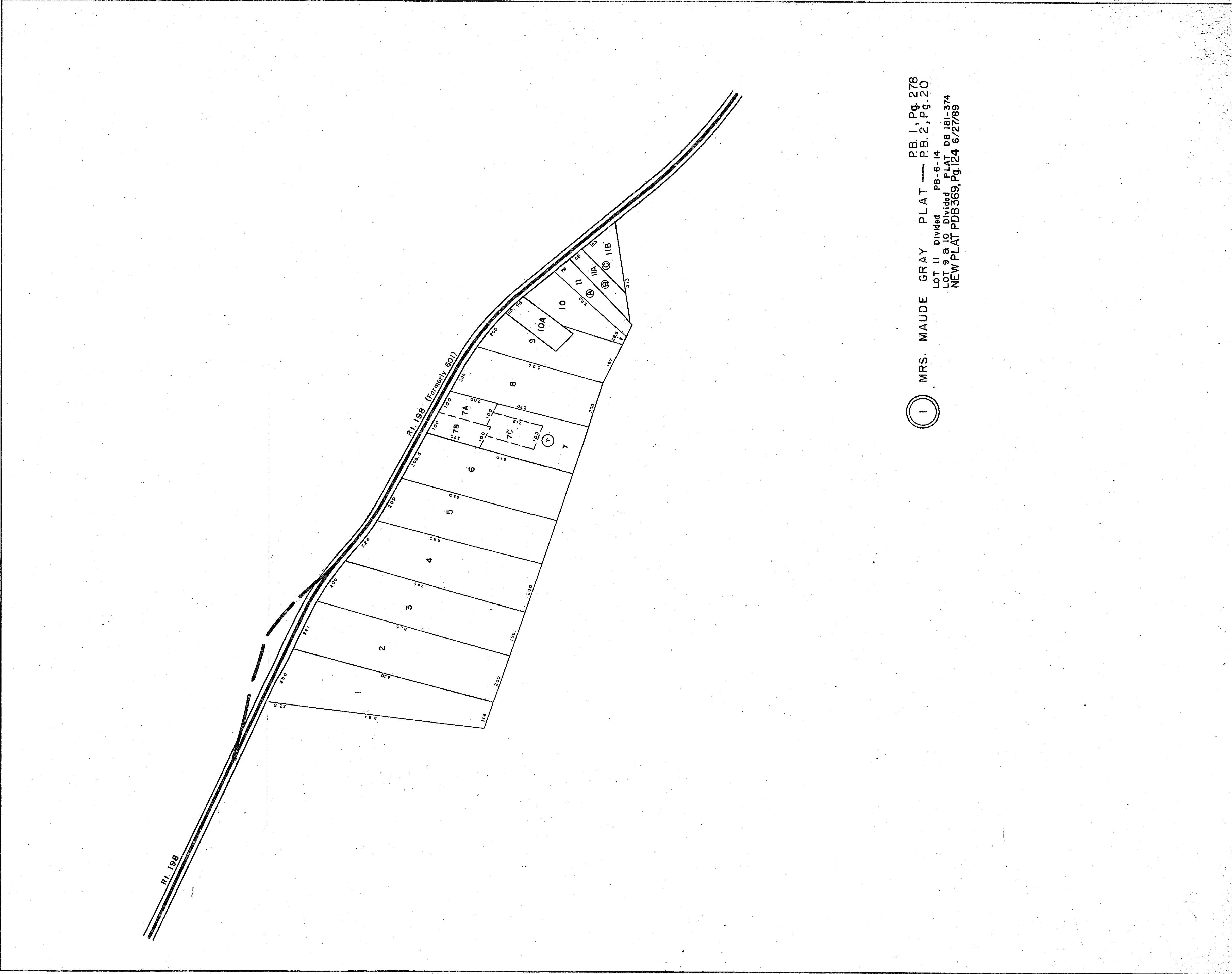
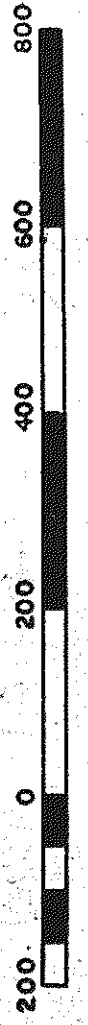


GLOUCESTER COUNTY



① MRS. MAUDE GRAY PLAT — P.B. 1, Pg. 278
P.B. 2, Pg. 20
LOT 11 Divided P.B. 6-14
LOT 9 & 10 Divided PLAT DB 181-374
NEW PLAT PDB 369, Pg. 124 6/2/789

REV. 1/63, 12/31/83/84/89/92/99
REV. 12/75 SCALE IN FEET



PETSWORTH DISTRICT

VA. STATE DEPT. OF TAXATION DIVISION OF REAL ESTATE APPRAISAL AND MAPPING

INSERT 4A