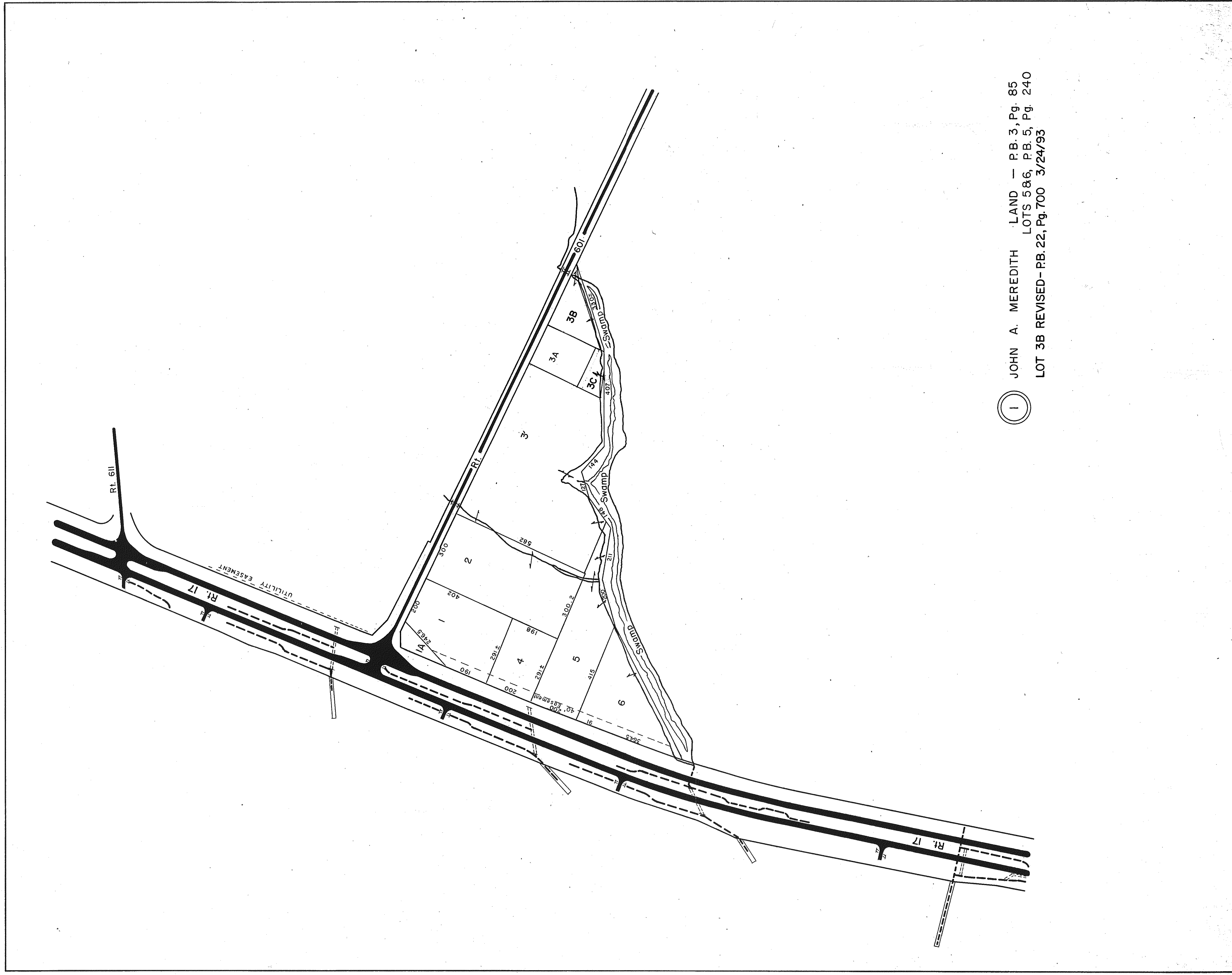


GLOUCESTER COUNTY



① JOHN A. MEREDITH LAND — P.B. 3, Pg. 85
LOTS 5&6, P.B. 5, Pg. 240
LOT 3B REVISED—P.B. 22, Pg. 700 3/24/93

REV. 1/63—9/8/71—REV. 12/75, 12/31/83/84/92/93
SCALE 200 IN 400 FEET 600 800

V.A. STATE DEPT OF TAXATION, DIVISION OF REAL ESTATE APPRAISAL AND MAPPING
PETSWORTH DISTRICT
INSERT 8A