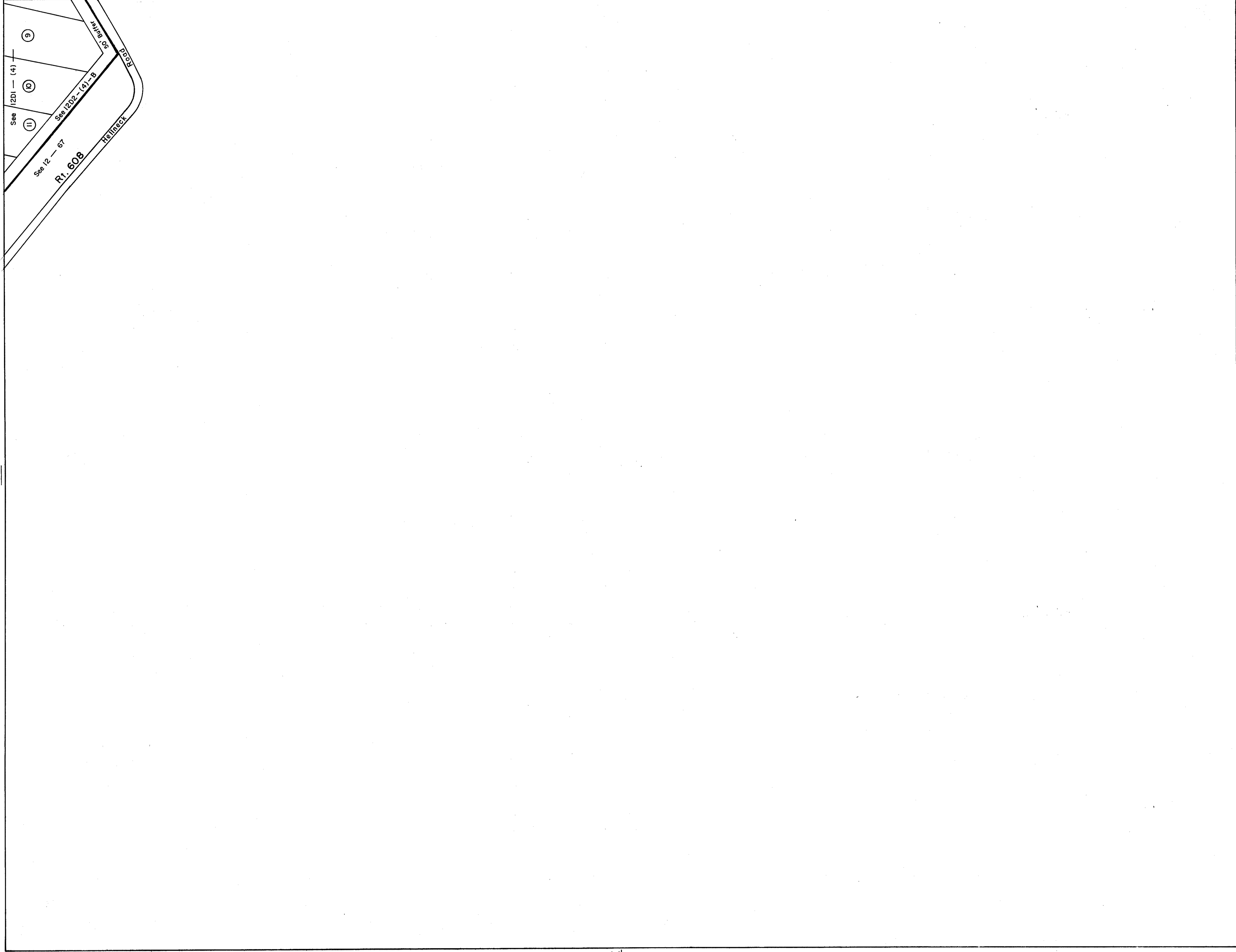
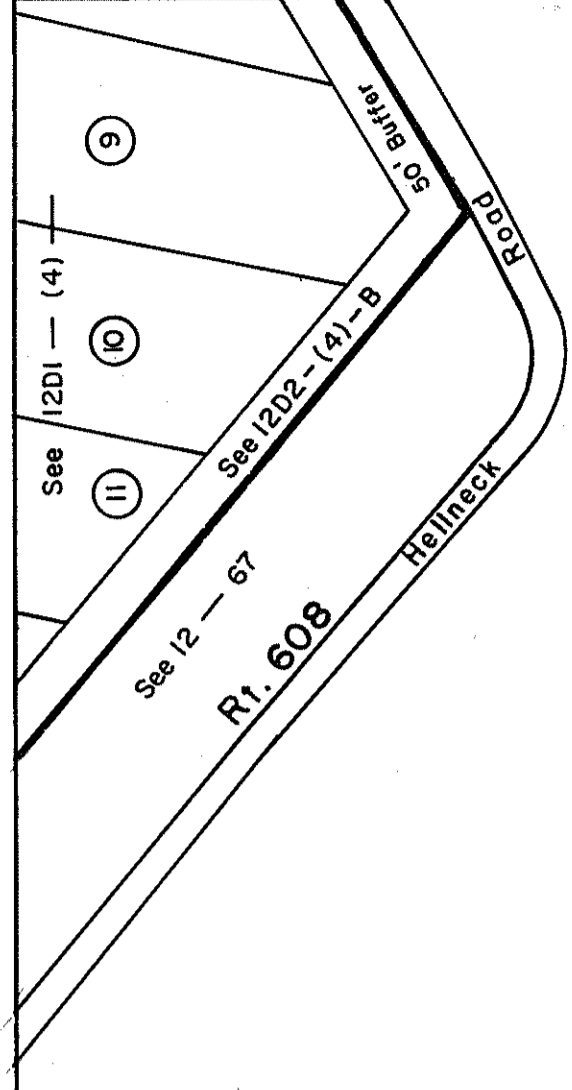


GLOUCESTER COUNTY

12D1



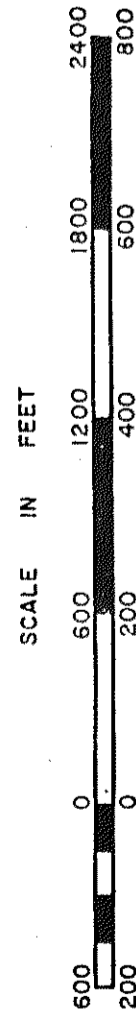
NONE

12D4

NONE

PETSWORTH DISTRICT

SECTION
INSERT 12D3



REVISED: 2003

PREPARED BY VIRGINIA STATE DEPARTMENT OF TAXATION, DIVISION OF REAL ESTATE APPRAISAL AND MAPPING