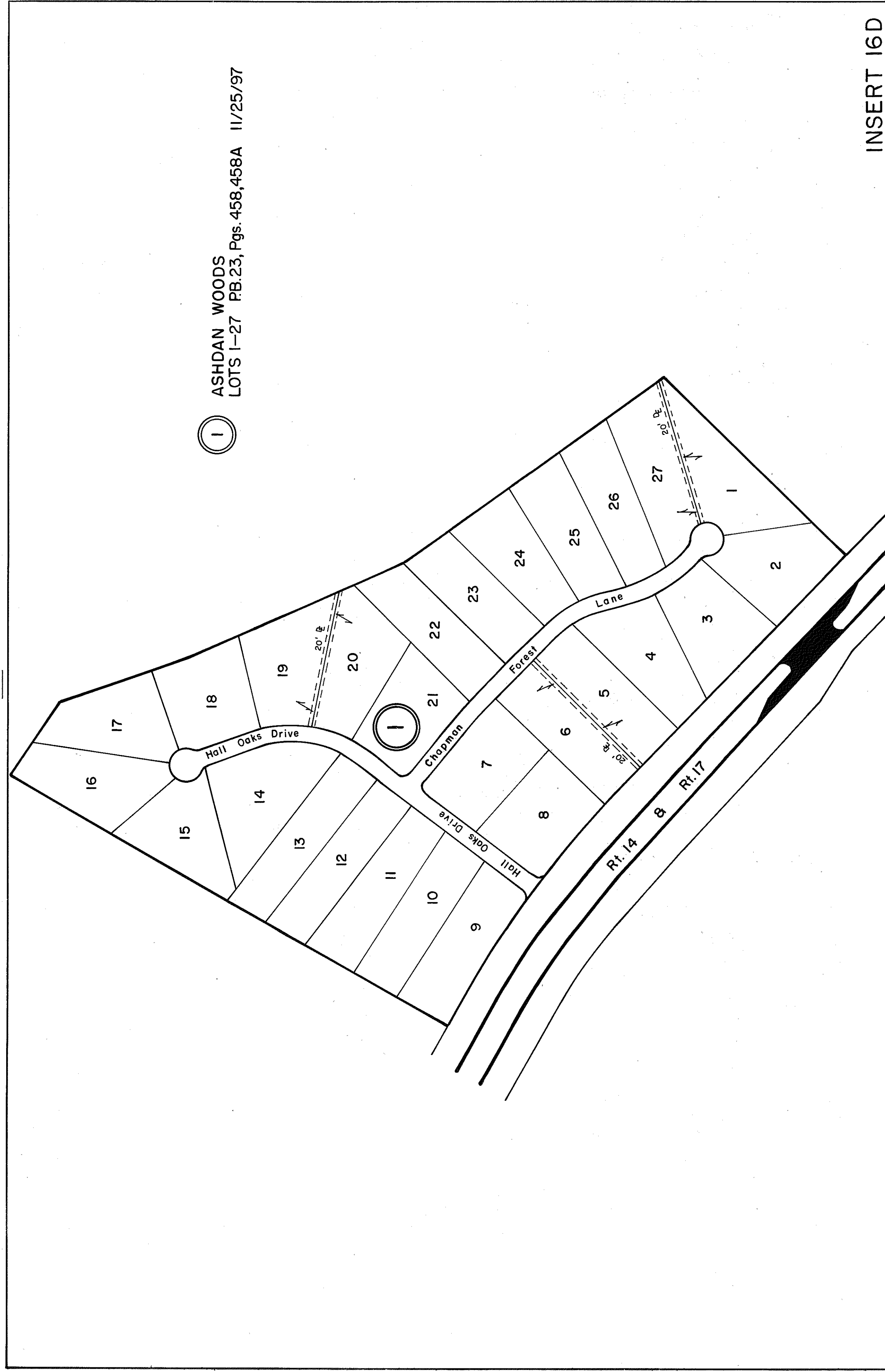
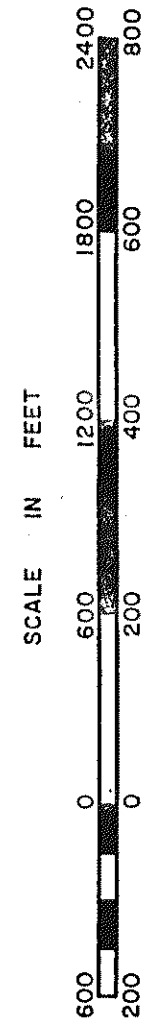


GLoucester COUNTY



① ASHDAN WOODS
LOTS 1-27 PB.23, Pgs. 458, 458A 11/25/97

INSERT 16D



REVISED: 11/97

© C. F. P. 1113 10-25 83040

PETSWORTH DISTRICT

SECTION
INSERT 16D

PREPARED BY VIRGINIA STATE DEPARTMENT OF TRANSPORTATION, DIVISION OF REAL ESTATE APPRAISAL AND MAPPING