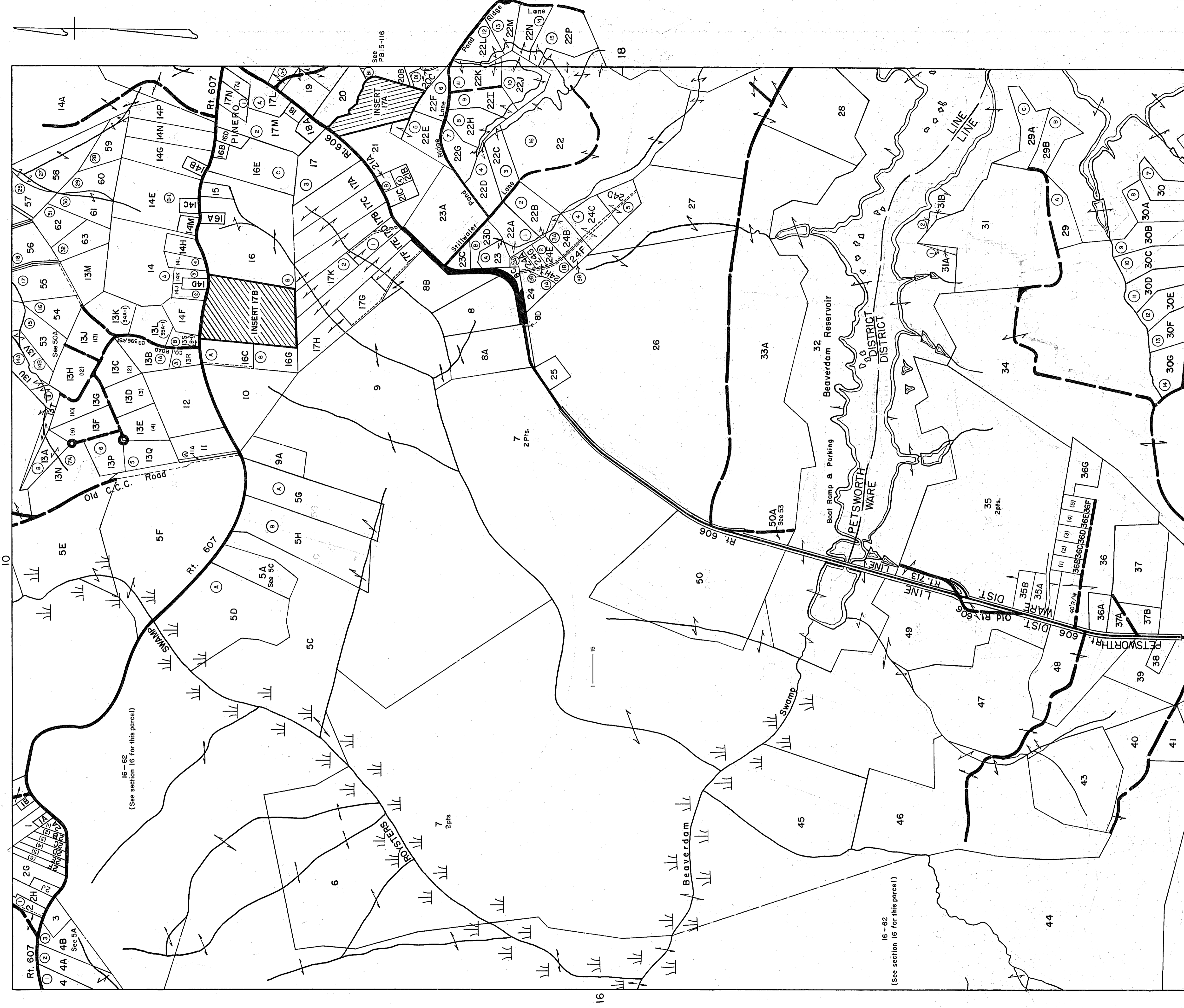
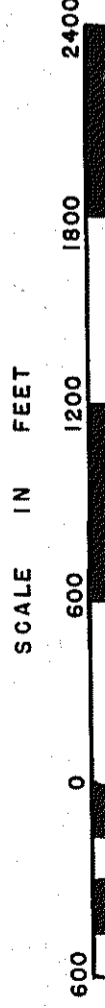


GLOUCESTER COUNTY



REV. 1/63; 12/75; 3/25/80; 12/31/83; 8/4/85; 8/6/86; 8/7/88; 8/9/90; 9/1/92; 9/3/94; 9/5/97; 9/8/99; 00/01/02; 4/03/04/06/07



PETSWORTH & WARE DISTRICTS

SECTION 17

VIRGINIA STATE DEPARTMENT OF TAXATION DIVISION OF REAL ESTATE APPRAISAL AND MAPPING