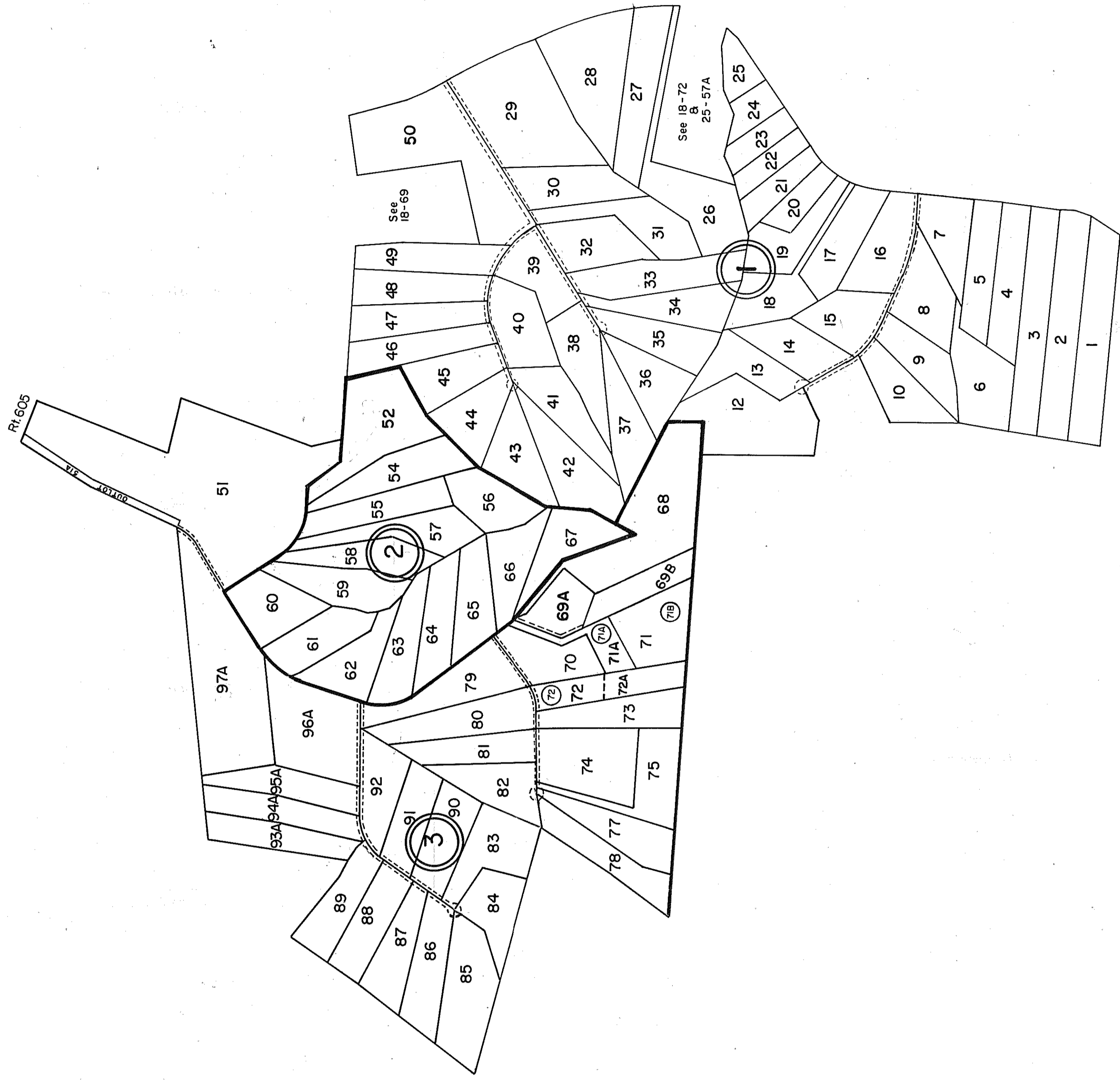


GLOUCESTER COUNTY



- ①
- ②
- ③

PARRISH TRACT II  
 LOTS 1-19 PB.21, Pg.99 6/86  
 LOTS 20-25 PB.21, Pg.97 6/86  
 LOTS 26-31 & 50 PB.21, Pg.119 7/86  
 LOTS 32-49 PB.21, Pg.116 7/86  
 TRACTS 687 REVISED PB.21, Pg.416 5/87  
 PARRISH TRACT II REVISED LOTS 11&12, ID/027677/PB24-32I 10/24/02  
 LOTS 52-67 PB.21, Pg.140 8/86  
 REVISED LOTS 52 & 53, ID/048971, PB.25, Pg.279 11/12/04  
 PARRISH TRACT II  
 TRACT 51, PB.21, Pg.221 10/86  
 TRACTS 68-82 PB.21, Pg.205  
 TRACTS 83-95 PB.21, Pg.203  
 TRACTS 96-99 PB.21, Pg.204, VACATED DB 314-528, 10/86  
 TRACTS 93A-97A RESUBDIVISION OF 93-99 PB.21, Pg.202 10/86  
 TRACT 51 Revised PB.22, Pg.154 9/6/90  
 TRACT 72 & 72A PB.22, Pg.525 5/18/92  
 TRACT 71 PB.25, Pg.226 6/24/04

12/86/87/90/92/95/97/02/03/04  
 SCALE IN FEET  
 0 200 400 600 800 1000 1200 1800 2400

WARE \_\_\_\_\_ DISTRICT \_\_\_\_\_

SECTION \_\_\_\_\_  
 INSERT 18C