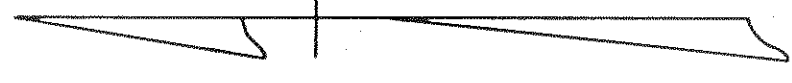


GLOUCESTER COUNTY

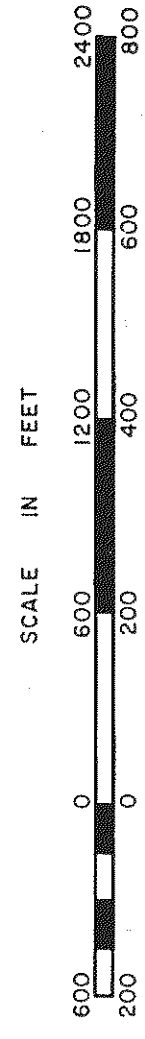


①

FIGG SHOP TRACT  
PB. 20, Pgs. 952, 962, 976, 983, 986 & 1000  
1985

REVISED LOT 64-PB. 23, Pg. 9 10/25/95  
REVISED LOT 64-PB. 23, Pg. 9 11/13/95  
REVISED TRACT 20, LD/993561 5/19/99  
REVISED TRACT 5 ID/027671 PB. 24, Pg. 320 10/24/02

SCALE 1" = 600' 12/85/91/92/95/99/02



WARE DISTRICT

SECTION  
INSERT 19C

REVISED:

DATE: 10/11/03 10:32:53AM

PREPARED BY VIRGINIA STATE DEPARTMENT OF TAXATION, DIVISION OF REAL ESTATE APPRAISAL AND MAPPING