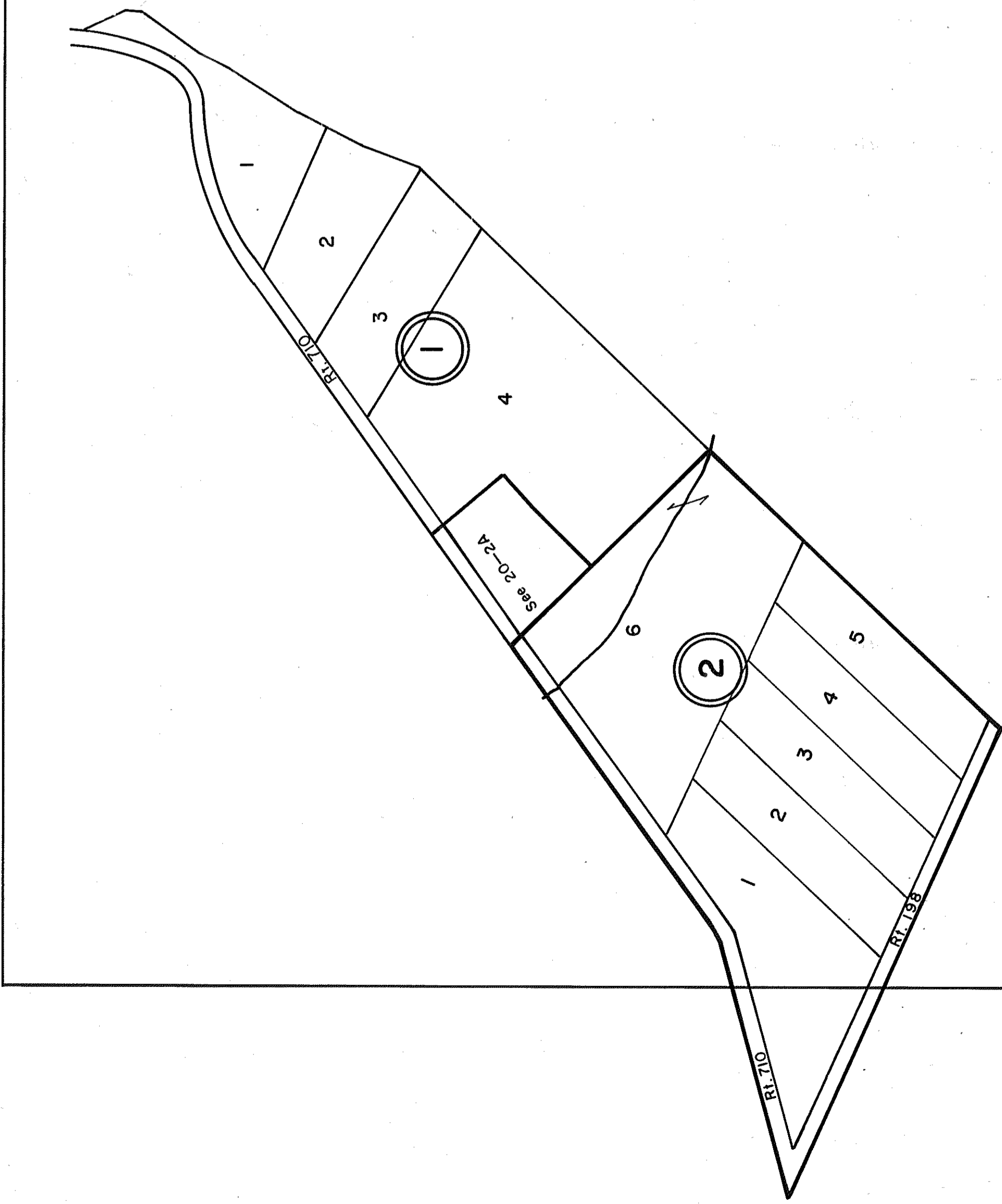


GLOUCESTER COUNTY



- ① DANCING CREEK SUBDIVISION  
LOTS 1-4 PB.22, Pg.90
- ② DUTTON FARMS SUBDIVISION  
LOTS 1-6 PB.22, Pg.625  
10/30/92

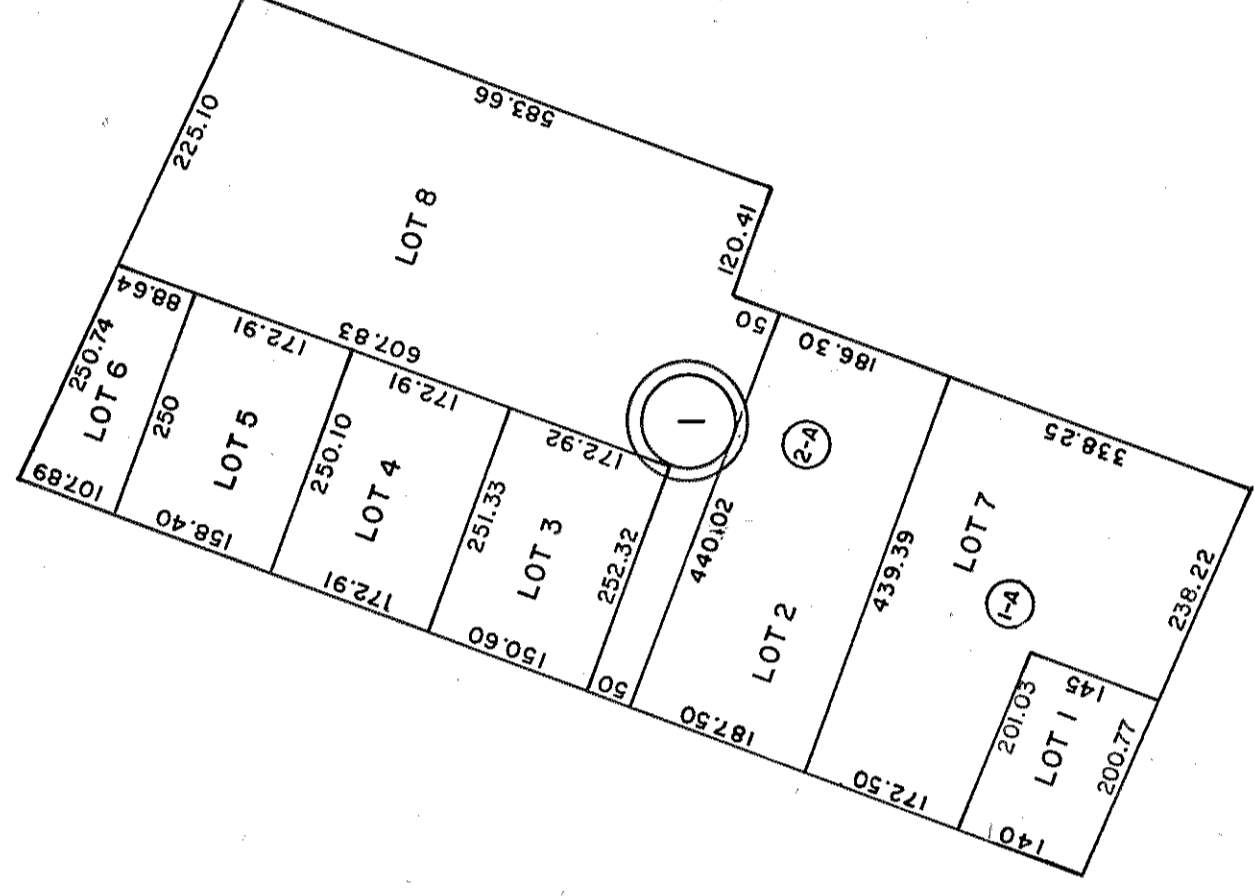
INSERT 20C

PETSWORTH

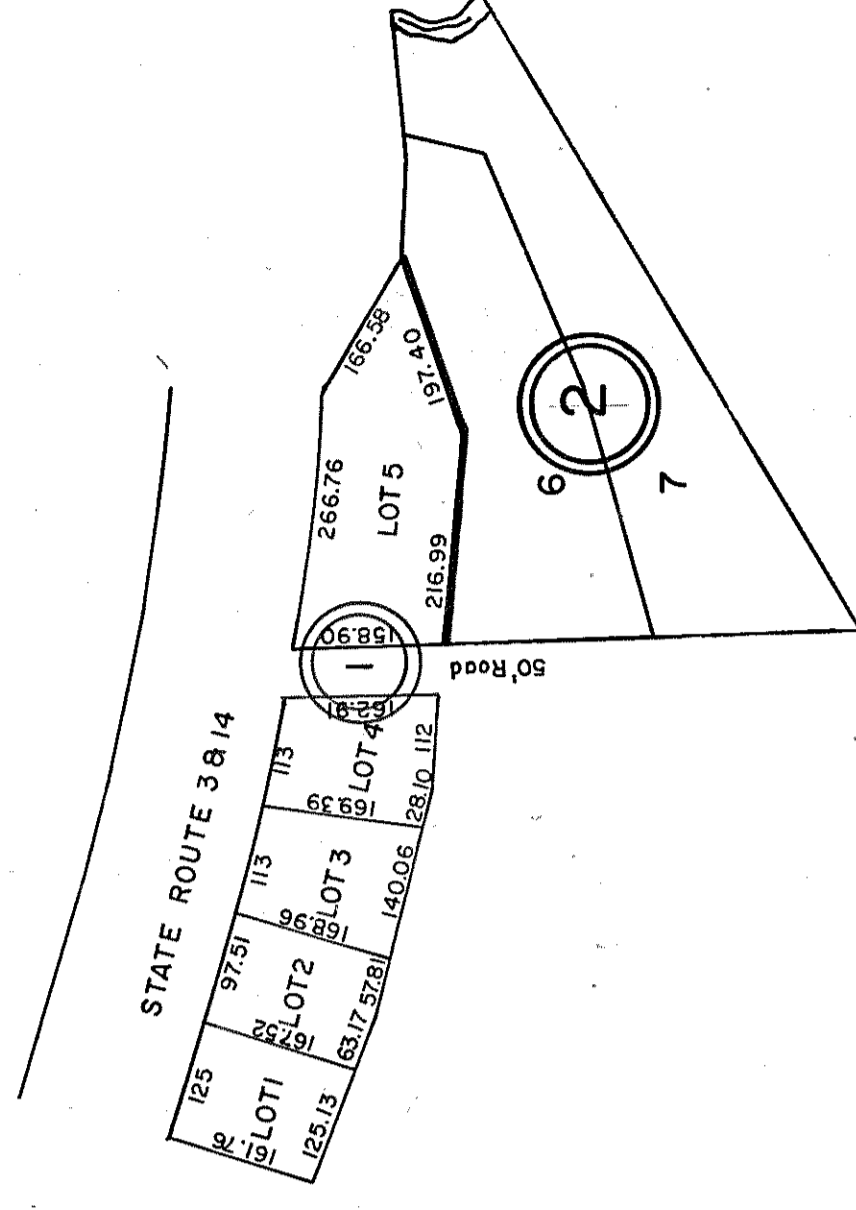
REV. 12/87

PETSWORTH

INSERT 20B



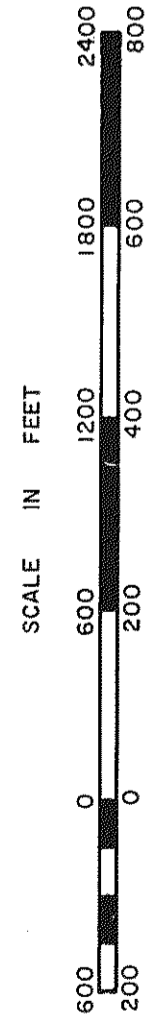
- ① LESTER'S LANDING  
SECTION 1, P.B.20, pg.93  
RESUBDIVISION LOT 2&7 3/87  
PB.21, Pg.368



- ① COUNTY-LINE SUBDIVISION  
P.B.20, pg.117, LOTS 1-5
- ② COUNTY-LINE SUBDIVISION  
P.B.21, Pg.417, LOTS 6,7, 1966  
5/87

INSERT 20A

REV. 12/87 WARE



PETSWORTH & WARE DISTRICT

SECTION INSERT 20A, B, C