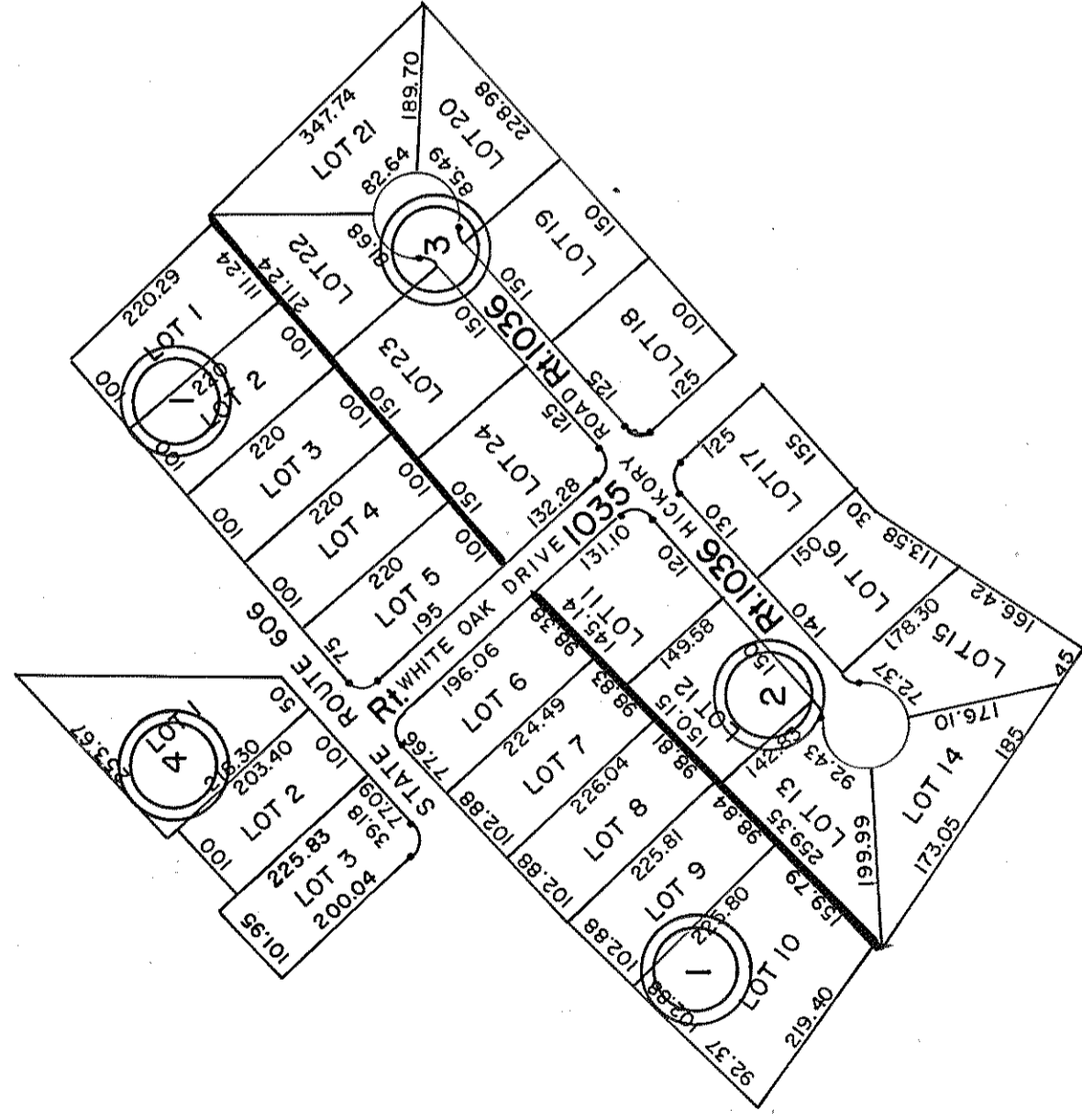


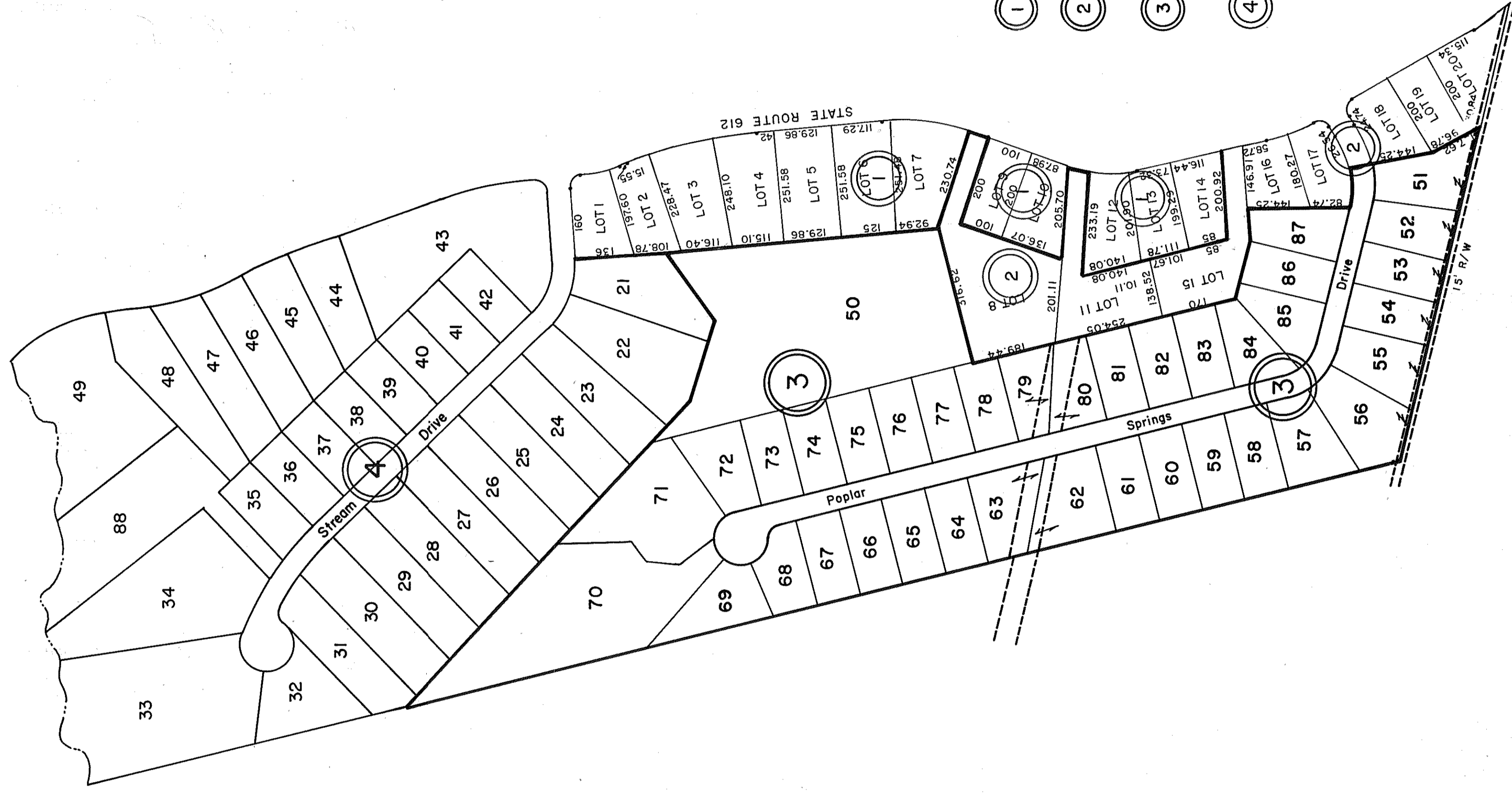
GLoucester COUNTY



- ① OAK GROVE SUBDIVISION
SECTION ONE,
P.B. 11, Pg. 20, LOTS 1-10
- ② SECTION TWO
P.B. 12, Pg. 79 LOTS 11-17
- ③ SECTION TWO
P.B. 16, Pg. 34, LOTS 18-24
- ④ TRIPLE G FARMS
P.B. 20, Pg. 89
LOT 3 REVISED P.B. 23-466, 12/1/97

INSERT 23A

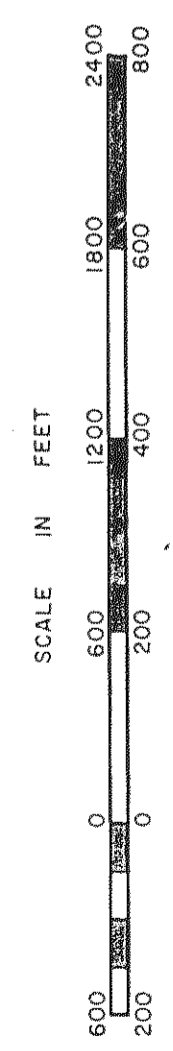
WARE



- ① POPLAR SPRINGS
P.B. 18, pg. 99, LOTS 1-7, 9, 10, 12-14
- ② POPLAR SPRINGS
P.B. 20, pg. 389, LOTS 8, 11, 15-20
- ③ POPLAR SPRINGS-SECTION TWO-
P.B. 20, Pgs. 726 & 726A
LOTS 50-87
Revised Lots 70 & 71, P.B. 25, Pg. 342 4/21/05
- ④ POPLAR SPRINGS
P.B. 21, Pg. 208
LOTS 21-49 & 88 10/86

INSERT 23B

PETSWORTH



PETSWORTH
& WARE DISTRICT

SECTION
INSERT 23A, 23B