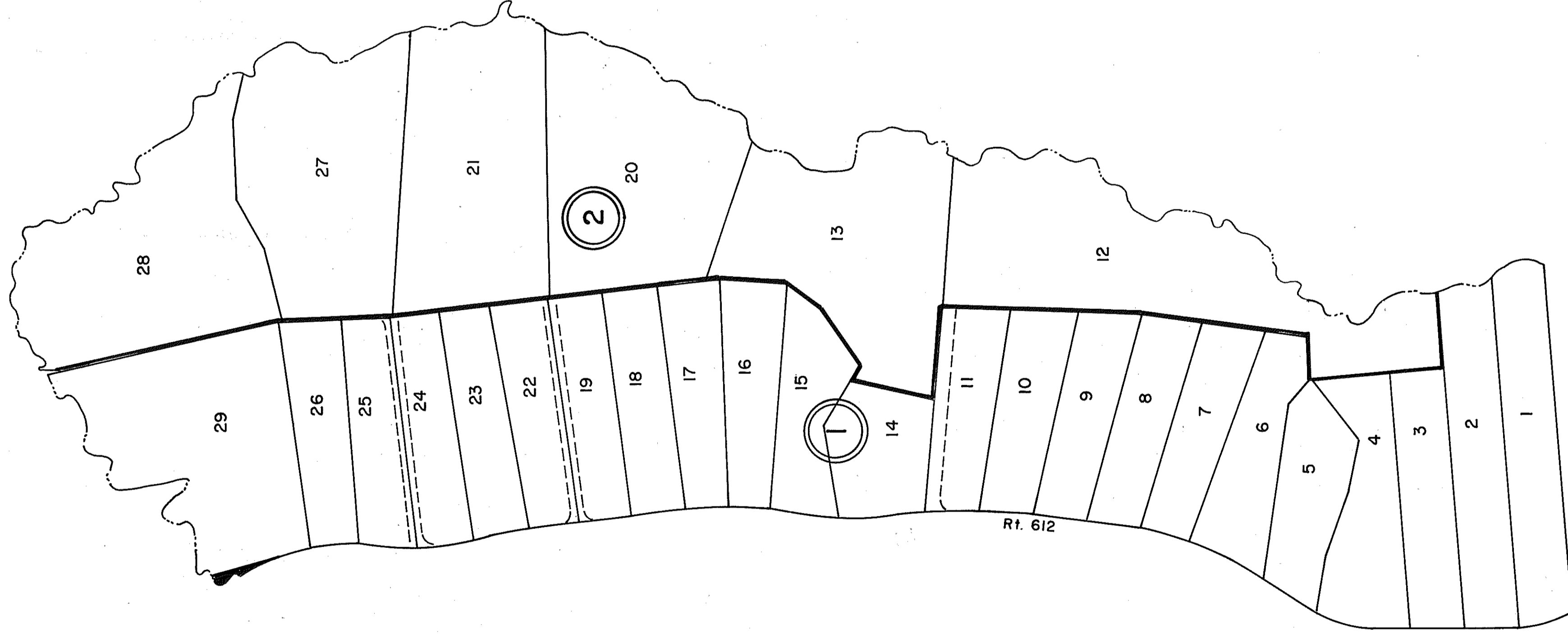
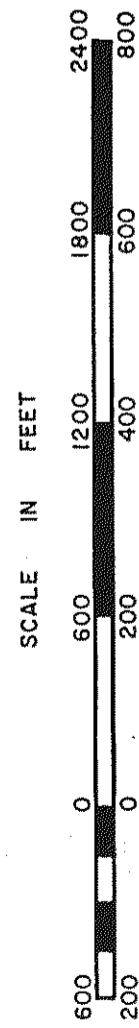


GLOUCESTER COUNTY



- ① COLONY SUBDIVISION
PARCELS 1-11, 14-19, 22-26 & 29
P.B. 21, Pgs. 226 & 227, 10/27/86
NAME CHANGED DB. 316-871, 4/7/87 (FROM G&H TO COLONY)
LOTS 38-4 REVISED P.B. 21, Pg. 693, 12/13/88
- ② COLONY SUBDIVISION
PARCELS 12, 13, 20, 21, 27 & 28
P.B. 21, Pgs. 479 & 480, 7/23/87
LOT 12 REVISED P.B. 21, Pg. 893, 12/13/88

12/86, 87/88/89/92



PETSWORTH DISTRICT

SECTION 23D
INSERT