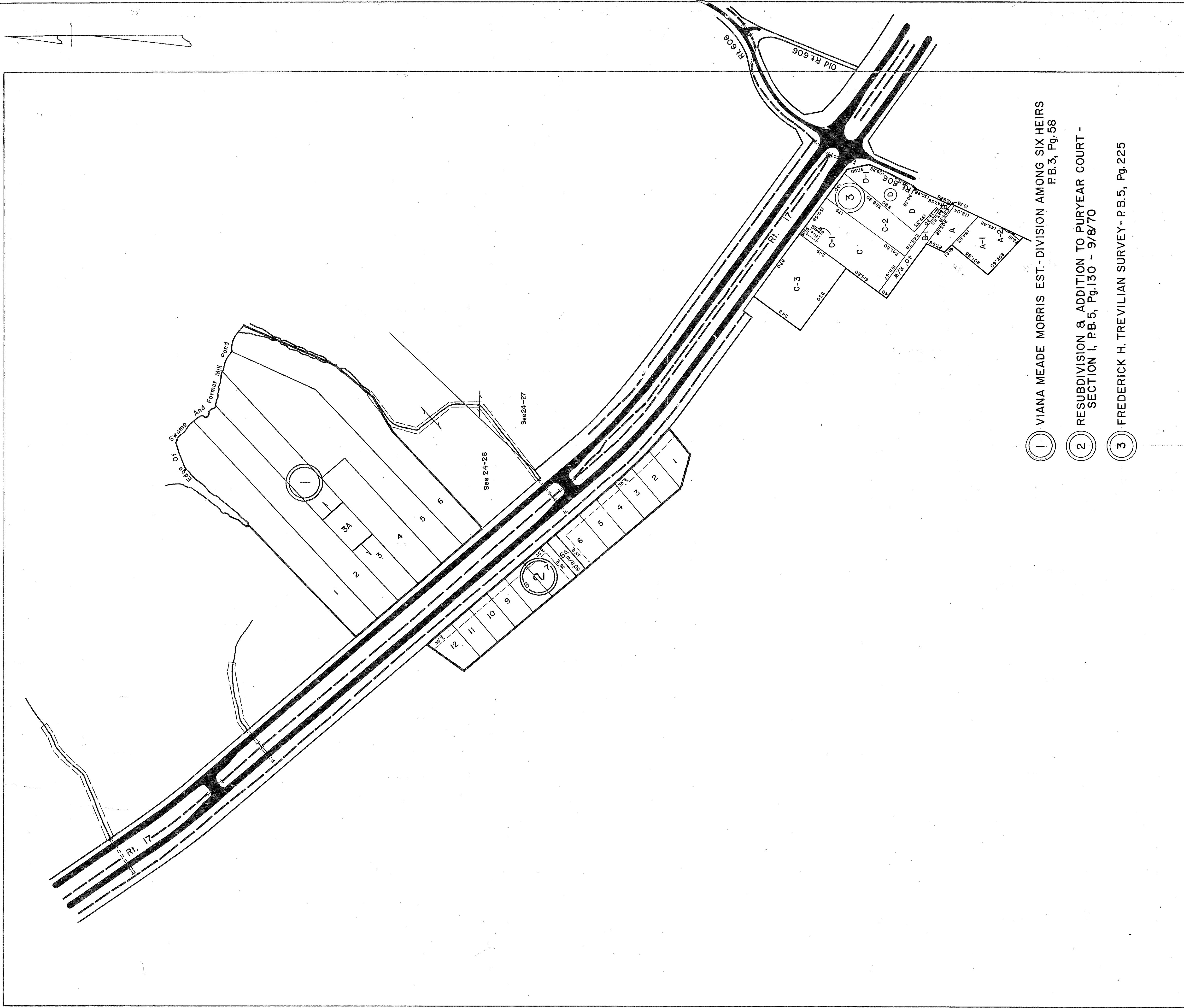
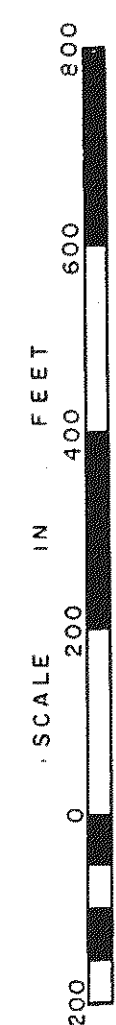


GLOUCESTER COUNTY



- ① VIANA MEADE MORRIS EST.-DIVISION AMONG SIX HEIRS
P.B.3, Pg.58
- ② RESUBDIVISION & ADDITION TO PURYEAR COURT -
SECTION I, P.B.5, Pg.130 - 9/8/70
- ③ FREDERICK H. TREVILIAN SURVEY - P.B.5, Pg. 225

REV. 1/63



REVISED 9/8/71, 12/75, 12/31/83/84/92

VA. STATE DEPT. OF TAXATION, DIVISION OF REAL ESTATE APPRAISAL AND MAPPING

PETSWORTH DISTRICT

INSERT 24C