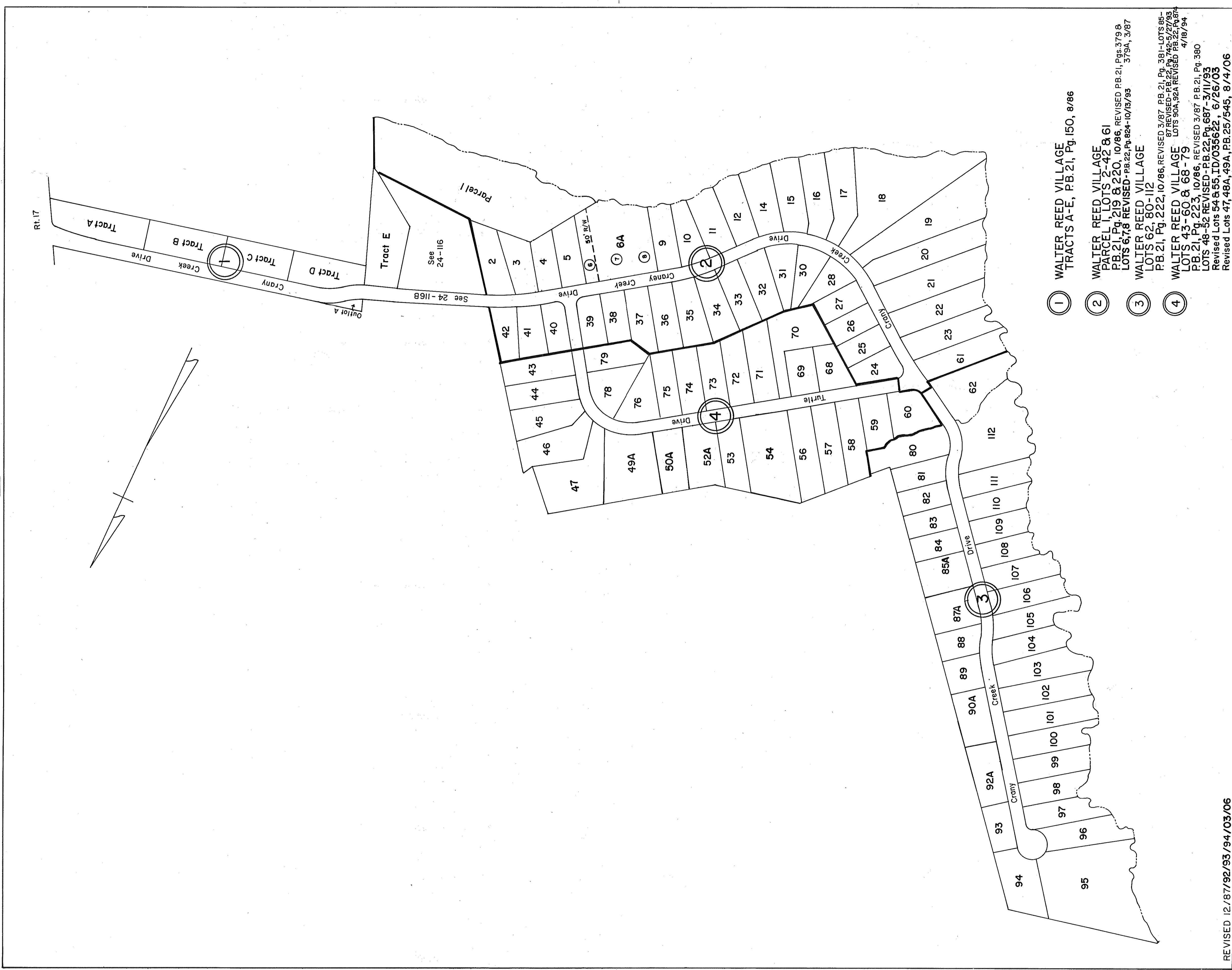
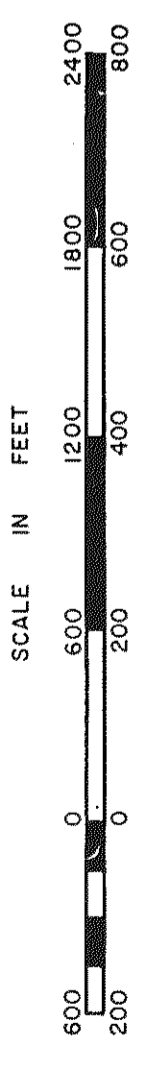


GLOUCESTER COUNTY



- ① WALTER REED VILLAGE TRACTS A-E, PB.21, Pg.150, 8/86
- ② WALTER REED VILLAGE PARCEL 1, LOTS 2-42 & 61 PB.21, Pg.219 & 220, 10/86, REVISED PB.21, Pgs.379 & 380, LOTS 6,7,8 REVISED-PB.22, Pg.824-10/13/93, 3/79A, 3/87
- ③ WALTER REED VILLAGE LOTS 62, 80-112 PB.21, Pg.222, 10/86, REVISED 3/87 PB.21, Pg.381-LOTS 85-87 REVISED-PB.21, Pgs.379 & 380, LOTS 90A, 92A REVISED PB.21, Pg.379 & 380, 4/18/94
- ④ WALTER REED VILLAGE LOTS 43-60 & 68-79 PB.21, Pg.223, 10/86, REVISED 3/87 PB.21, Pg.380 LOTS 48-52 REVISED-PB.22, Pg.687-3/11/93 Revised Lots 54 & 55, ID/035622, 6/26/03 Revised Lots 47, 48A, 49A, PB.25/545, 8/4/06

REVISED 12/87/92/93/94/03/06



WARE DISTRICT

SECTION 24H
INSERT