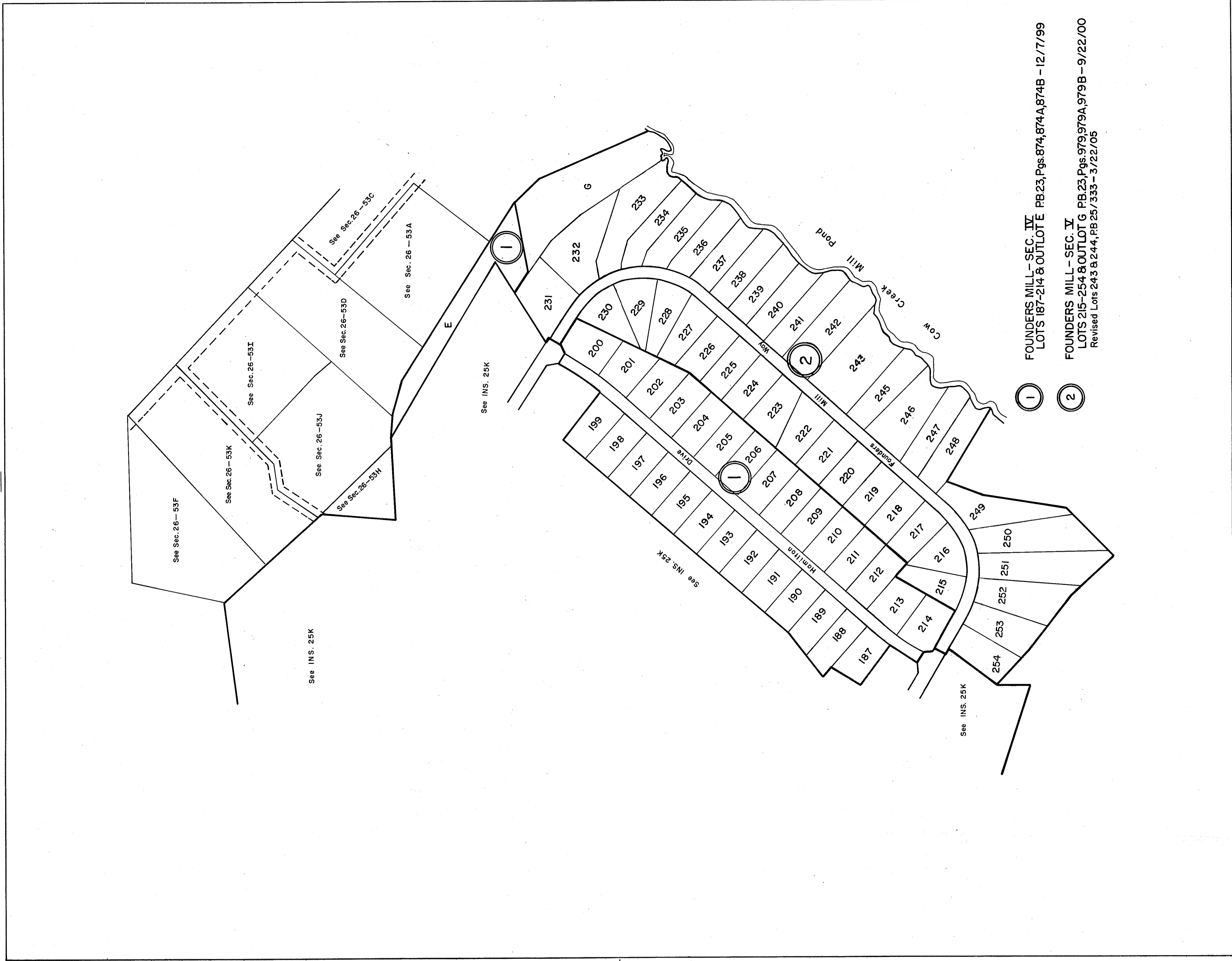
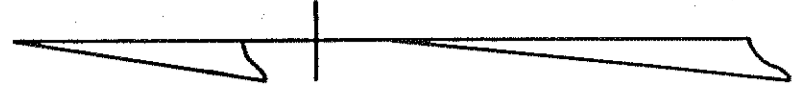
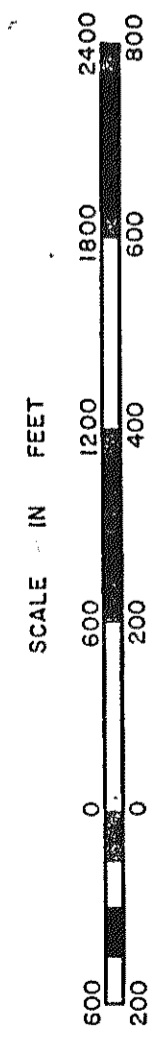


GLOUCESTER COUNTY



① FOUNDERS MILL - SEC. IV  
LOTS 187-214 & OUTLOT E PB.23, Pgs.874,874A,874B - 12/7/99

② FOUNDERS MILL - SEC. IV  
LOTS 215-254 & OUTLOT G PB.23, Pgs.979,979A,979B - 9/22/00  
Revised Lots 243 & 244, PB 257/333 - 3/22/05



WARE DISTRICT

SECTION INSERT 26C