

GLOUCESTER COUNTY SURVEY MARK DATA SHEET

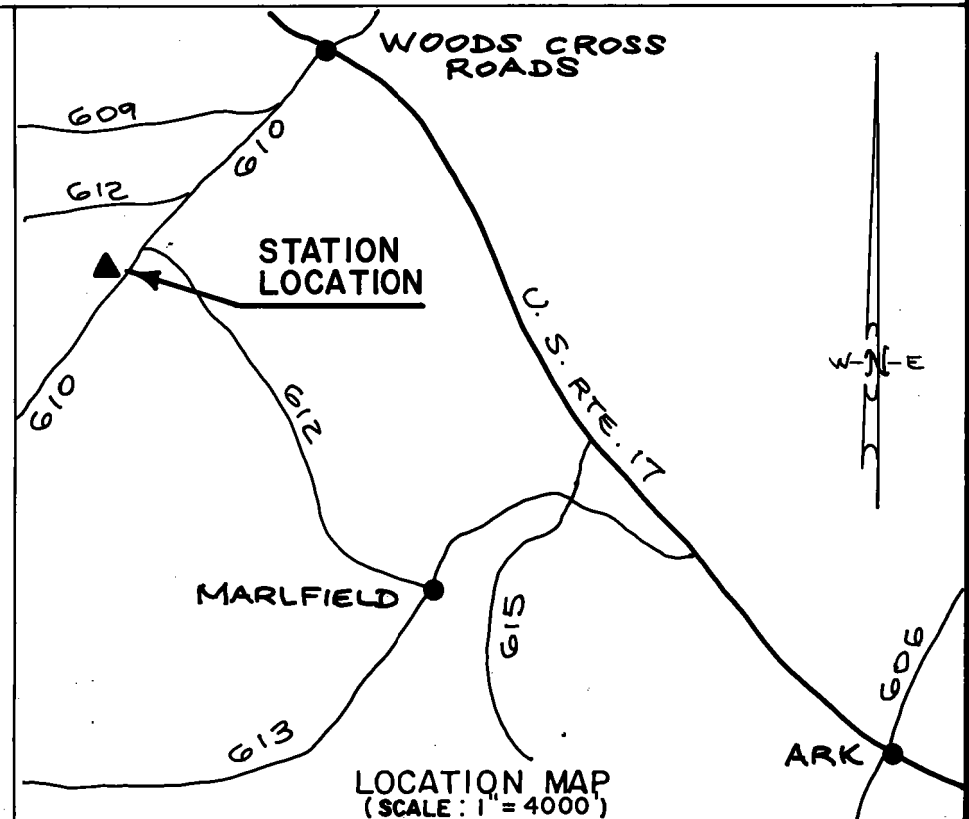
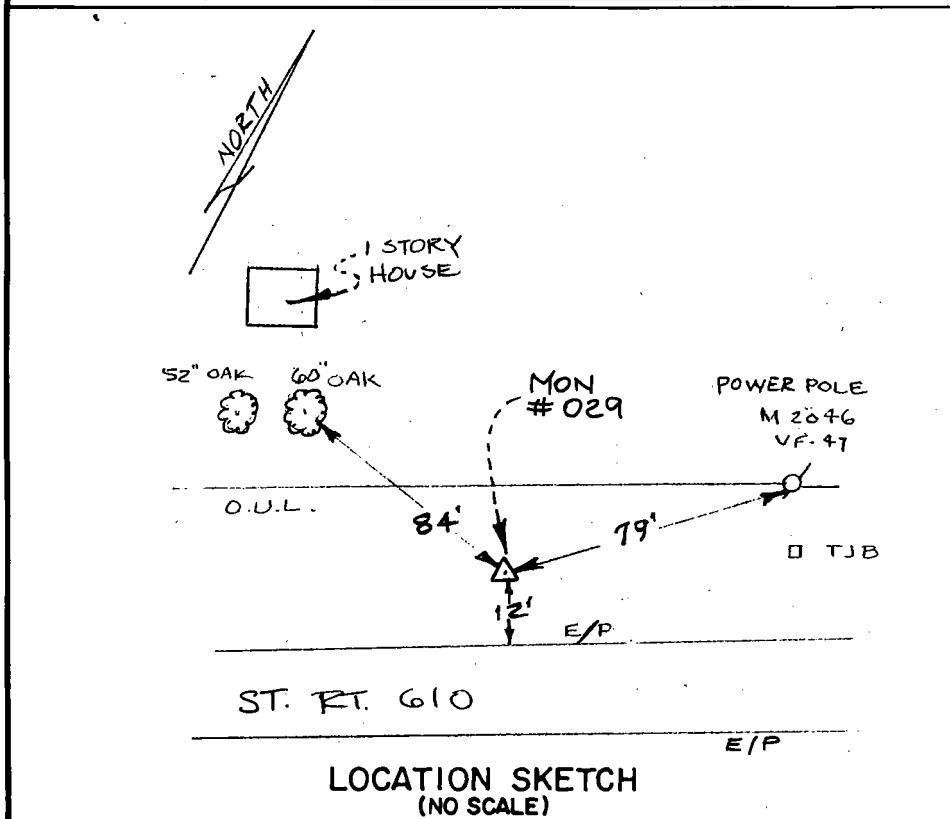
STATION NO.
029

HORIZONTAL DATA :		
VA. STATE PLANE COORD. - SOUTH ZONE (NAD 1983)		
UNITS	EASTING (X)	NORTHING (Y)
METERS	3665428.523	1127326.166
U.S. SURVEY FT.	12025660.079	3698569.263
LATITUDE (DMS)		37 27 57.26269
LONGITUDE (DMS)		76 37 47.29186
SCALE FACTOR		0.99994687
CONVERGENCE \sphericalangle (DMS)		1 8 6.25
VERTICAL DATA :		
REF. TO NATL. GEOD. VERT. DATUM (1988)		
UNITS	STATION ELEVATION	
METERS	27.95	
U.S. SURVEY FT.	91.71	

STATION DESCRIPTION :

DISTRICT : PETSORTH

A 3-1/4" ALUMINUM DISK MONUMENT SET APPROXIMATELY FLUSH WITH THE GROUND STAMPED STATION NO. 029. TO REACH: FROM THE INTERSECTION OF U. S. ROUTE 17 AND STATE ROUTE 610 AT WOODS CROSS ROADS, GO ABOUT 1.0 MILES SOUTHWEST ON STATE ROUTE 610 TO MONUMENT SITE ON NORTH SIDE OF STATE ROUTE 610.



DATE: JANUARY, 1992

NOTE: USERS OF MONUMENTS LOCATED ON PRIVATE PROPERTY
MUST OBTAIN LAND OWNERS PERMISSION BEFORE ENTERING



DAWSON & PHILLIPS, P.C.
CERTIFIED LAND SURVEYORS
(804) 693-2993