

GLOUCESTER COUNTY SURVEY MARK DATA SHEET

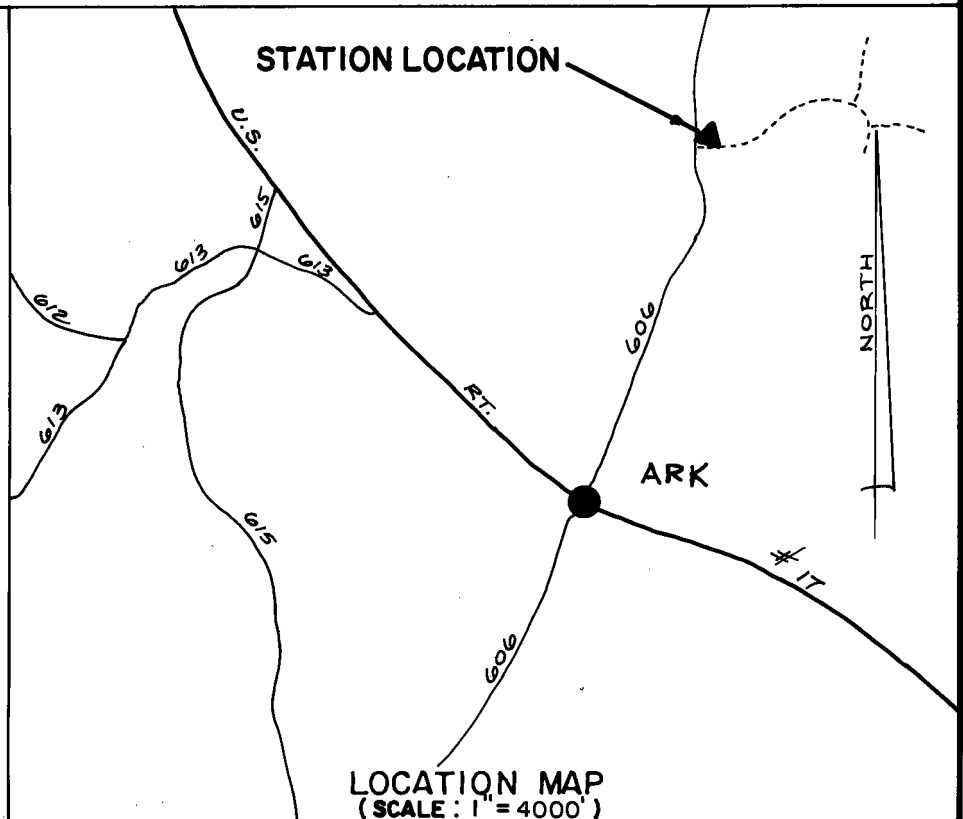
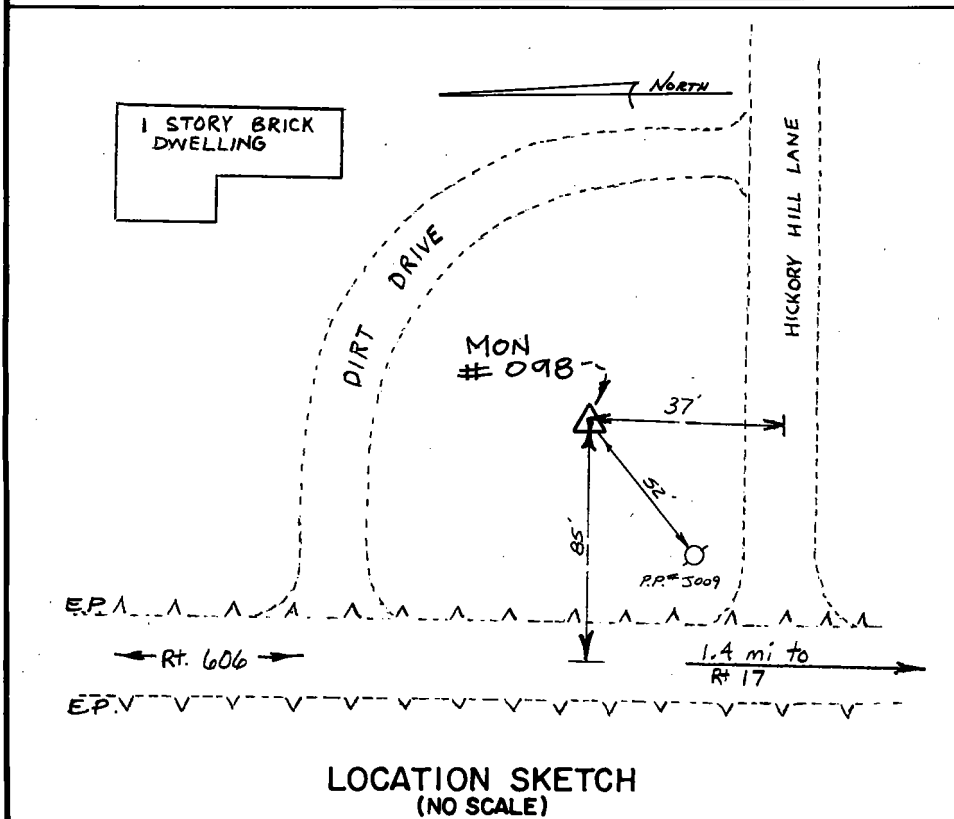
STATION NO.
098

HORIZONTAL DATA :		
VA. STATE PLANE COORD. - SOUTH ZONE (NAD 1983)		
UNITS	EASTING (X)	NORTHING (Y)
METERS	3670991.015	1126532.269
U.S. SURVEY FT.	12043909.688	3695964.619
LATITUDE (DMS)		37 27 27.88112
LONGITUDE (DMS)		76 34 1.62996
SCALE FACTOR		0.99994664
CONVERGENCE \sphericalangle (DMS)		1 10 23.21
VERTICAL DATA :		
REF. TO NATL. GEOD. VERT. DATUM (1988)		
UNITS	STATION ELEVATION	
METERS	27.38	
U.S. SURVEY FT.	89.84	

STATION DESCRIPTION :

DISTRICT : WARE

A 3-1/4" ALUMINUM DISK MONUMENT SET APPROXIMATELY FLUSH WITH THE GROUND STAMPED STATION NO. 098. TO REACH: FROM THE INTERSECTION OF U. S. ROUTE 17 AND STATE ROUTE 606 AT ARK, GO ABOUT 1.4 MILES NORTHEAST ON STATE ROUTE 606 TO MONUMENT SITE AND "HICKORY HILL LANE", A PRIVATE LANE, ON THE EAST SIDE OF STATE ROUTE 606; MONUMENT IS ON THE NORTH SIDE OF "HICKORY HILL LANE" AND ON THE EAST SIDE OF STATE ROUTE 606.



DATE: JANUARY, 1992

NOTE: USERS OF MONUMENTS LOCATED ON PRIVATE PROPERTY
MUST OBTAIN LAND OWNERS PERMISSION BEFORE ENTERING



DAWSON & PHILLIPS, P.C.
CERTIFIED LAND SURVEYORS
(804) 693-2993