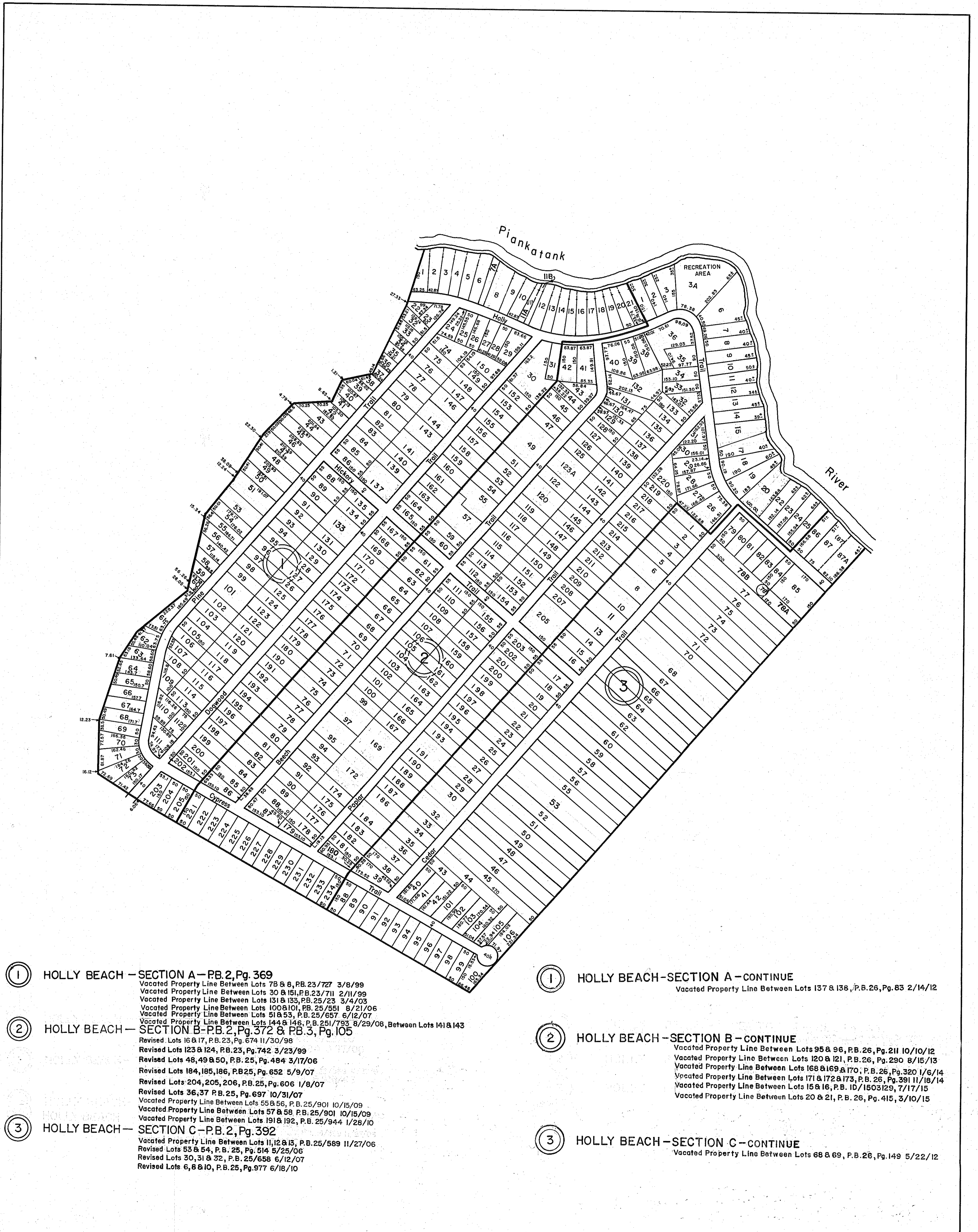


# GLOUCESTER COUNTY



- ① HOLLY BEACH — SECTION A — P.B. 2, Pg. 369  
 Vacated Property Line Between Lots 78 & 8, P.B. 23/727 3/8/99  
 Vacated Property Line Between Lots 30 & 151, P.B. 23/711 2/11/99  
 Vacated Property Line Between Lots 131 & 133, P.B. 25/23 3/4/03  
 Vacated Property Line Between Lots 100 & 101, P.B. 25/551 8/21/06  
 Vacated Property Line Between Lots 51 & 53, P.B. 25/657 6/12/07  
 Vacated Property Line Between Lots 144 & 146, P.B. 25/793 8/29/08, Between Lots 141 & 143
- ② HOLLY BEACH — SECTION B — P.B. 2, Pg. 372 & P.B. 3, Pg. 105  
 Revised Lots 16 & 17, P.B. 23, Pg. 674 11/30/98  
 Revised Lots 123 & 124, P.B. 23, Pg. 742 3/23/99  
 Revised Lots 48, 49 & 50, P.B. 25, Pg. 484 3/17/06  
 Revised Lots 184, 185, 186, P.B. 25, Pg. 652 5/9/07  
 Revised Lots 204, 205, 206, P.B. 25, Pg. 606 1/8/07  
 Revised Lots 36, 37 P.B. 25, Pg. 697 10/31/07  
 Vacated Property Line Between Lots 55 & 56, P.B. 25/901 10/15/09  
 Vacated Property Line Between Lots 57 & 58 P.B. 25/901 10/15/09  
 Vacated Property Line Between Lots 191 & 192, P.B. 25/944 1/28/10
- ③ HOLLY BEACH — SECTION C — P.B. 2, Pg. 392  
 Vacated Property Line Between Lots 11, 12 & 13, P.B. 25/589 11/27/06  
 Revised Lots 53 & 54, P.B. 25, Pg. 514 5/25/06  
 Revised Lots 30, 31 & 32, P.B. 25/658 6/12/07  
 Revised Lots 6, 8 & 10, P.B. 25, Pg. 977 6/18/10

- ① HOLLY BEACH — SECTION A — CONTINUE  
 Vacated Property Line Between Lots 137 & 138, P.B. 26, Pg. 83 2/14/12
- ② HOLLY BEACH — SECTION B — CONTINUE  
 Vacated Property Line Between Lots 95 & 96, P.B. 26, Pg. 211 10/10/12  
 Vacated Property Line Between Lots 120 & 121, P.B. 26, Pg. 290 8/15/13  
 Vacated Property Line Between Lots 168 & 169 & 170, P.B. 26, Pg. 320 1/6/14  
 Vacated Property Line Between Lots 171 & 172 & 173, P.B. 26, Pg. 391 11/18/14  
 Vacated Property Line Between Lots 15 & 16, P.B. 10/1503129, 7/17/15  
 Vacated Property Line Between Lots 20 & 21, P.B. 26, Pg. 415, 3/10/15
- ③ HOLLY BEACH — SECTION C — CONTINUE  
 Vacated Property Line Between Lots 68 & 69, P.B. 26, Pg. 149 5/22/12

REV. 1/63, 12/75, 3/25/80, 12/31/83/84/92/98/99/00/03/06/07/08/09/10/11/12/13/14/15

VA. STATE DEPT. OF TAXATION, DIVISION OF REAL ESTATE APPRAISAL AND MAPPING



PETSWORTH DISTRICT

INSERT 6A