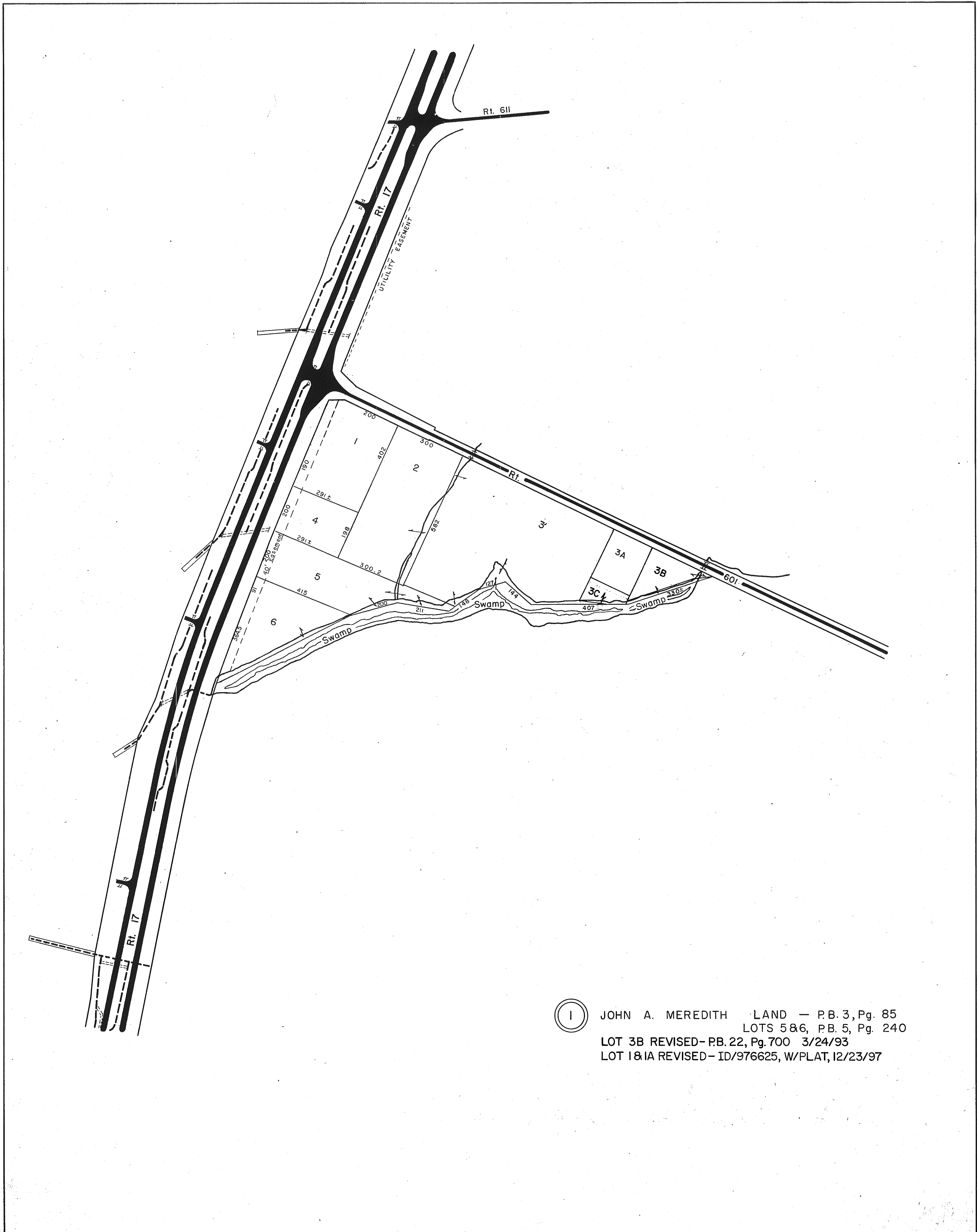


GLOUCESTER COUNTY



1 JOHN A. MEREDITH LAND - P.B. 3, Pg. 85  
LOTS 5&6, P.B. 5, Pg. 240  
LOT 3B REVISED- P.B. 22, Pg. 700 3/24/93  
LOT 1 & 1A REVISED- ID/976625, W/PLAT, 12/23/97

REV. 1/63-9/8/71-REV 12/75, 12/31/83/84/92/93/09

VA. STATE DEPT OF TAXATION, DIVISION OF REAL ESTATE APPRAISAL AND MAPPING



PETSWORTH DISTRICT

INSERT 8A