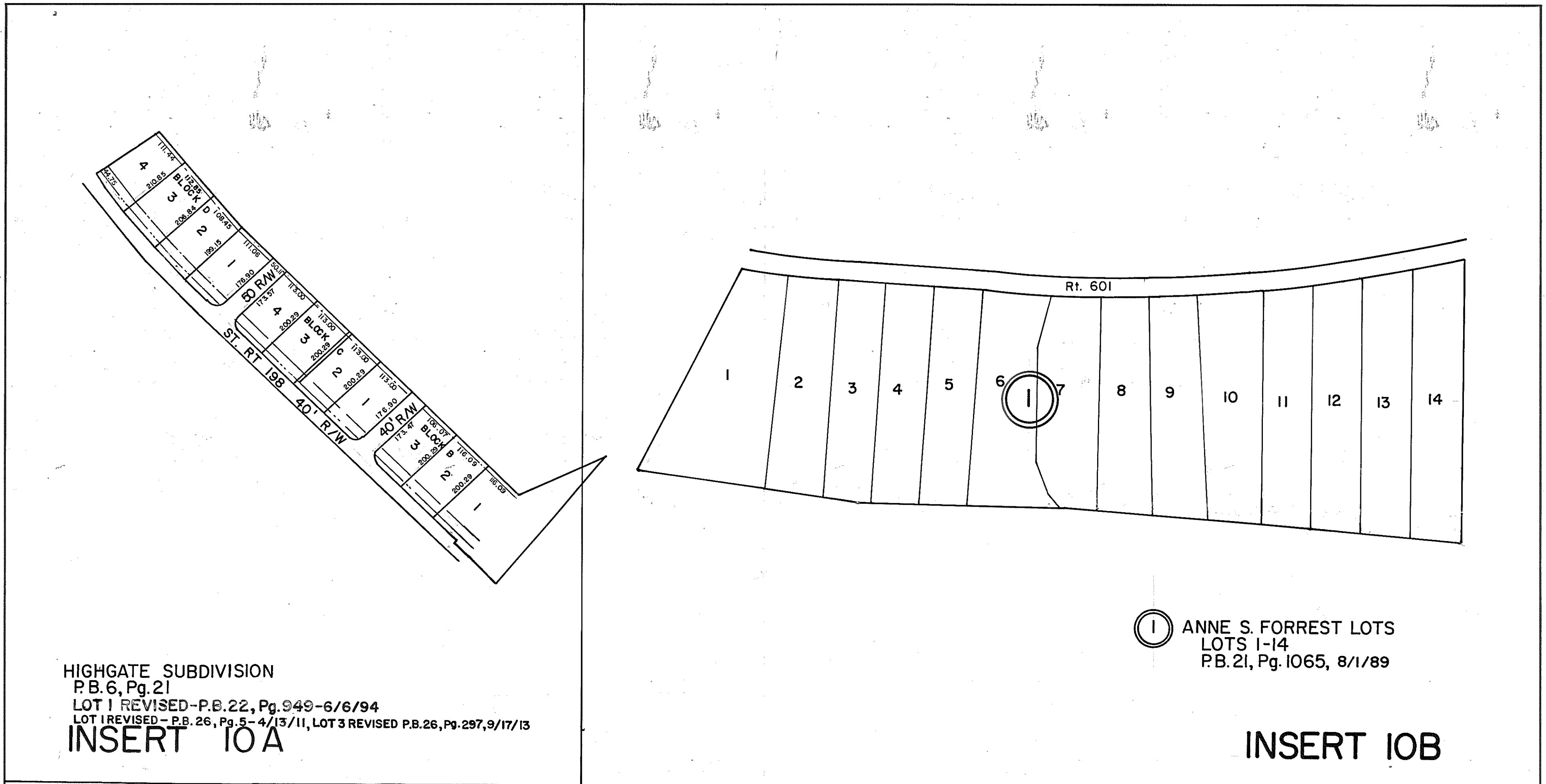


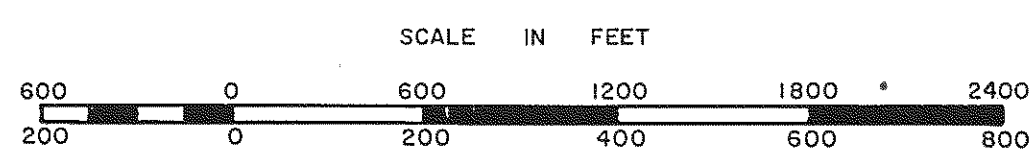
GLOUCESTER COUNTY



HIGHGATE SUBDIVISION
 P.B. 6, Pg. 21
 LOT 1 REVISED-P.B. 22, Pg. 949-6/6/94
 LOT 1 REVISED-P.B. 26, Pg. 5-4/13/11, LOT 3 REVISED P.B. 26, Pg. 297, 9/17/13
INSERT 10A

① ANNE S. FORREST LOTS
 LOTS 1-14
 P.B. 21, Pg. 1065, 8/1/89

INSERT 10B



PETSWORTH DISTRICT

SECTION _____
INSERT 10A, 10B