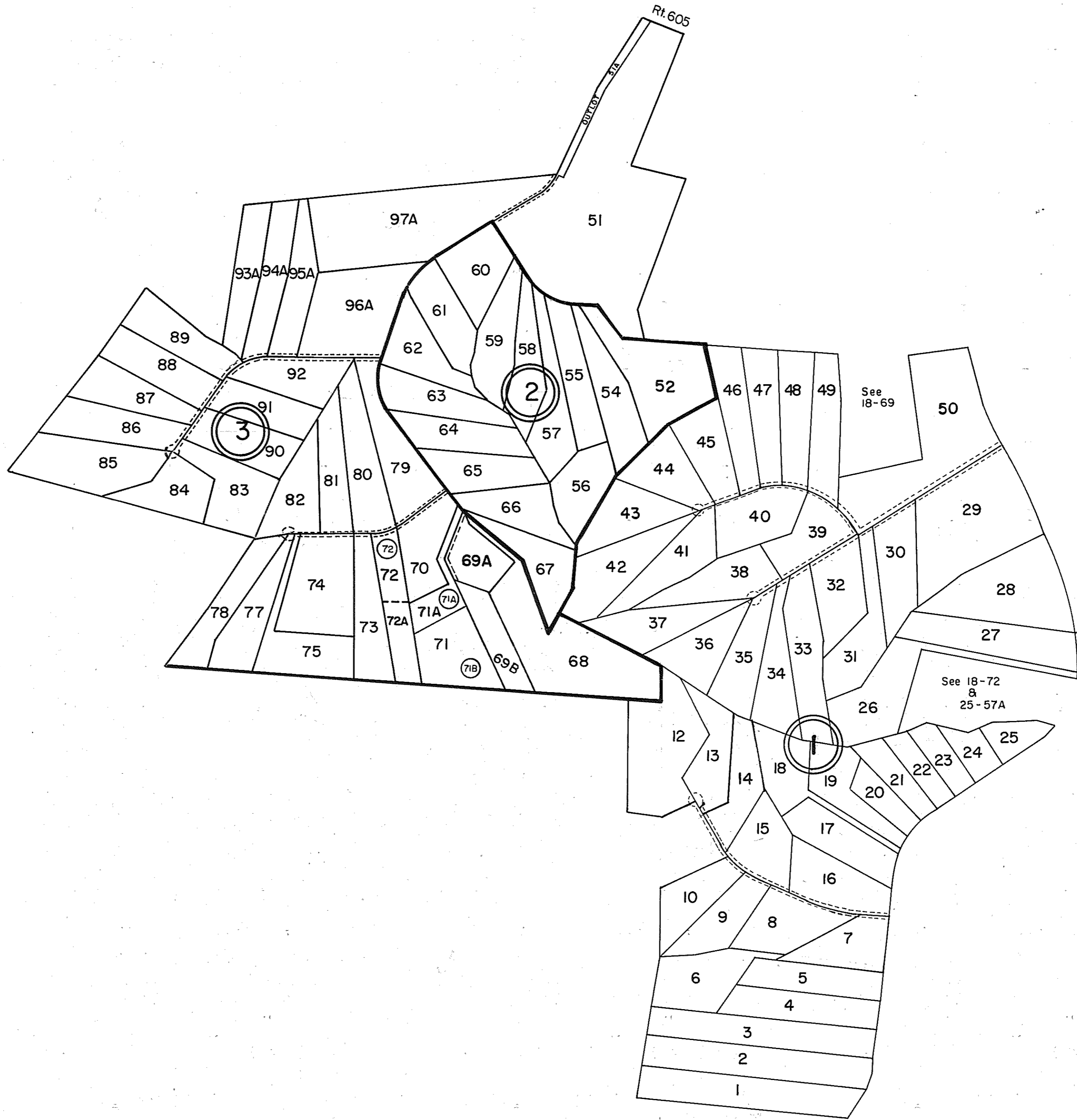


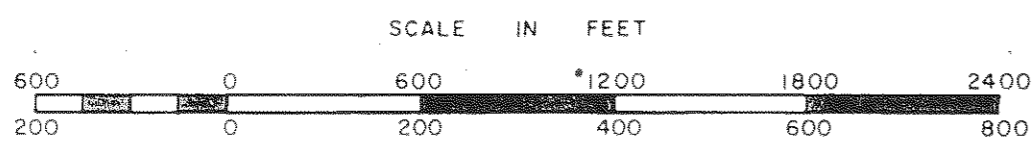
# GLOUCESTER COUNTY



- ① PARRISH TRACT II  
 LOTS 13 & 14 REVISED P.B. 25/731, 3/4/08 & P.B. 25/762, 6/23/08  
 LOTS 1-19 P.B. 21, Pg. 99 6/86  
 LOTS 20-25 P.B. 21, Pg. 97 6/86  
 LOTS 26-31 & 50 P.B. 21, Pg. 119 7/86  
 LOTS 32-49 P.B. 21, Pg. 116 7/86  
 TRACTS 6 & 7 REVISED P.B. 21, Pg. 416 5/87 LOTS 13 & 14 REVISED P.B. 25, Pg. 762, 3/11/13
- ② PARRISH TRACT II <sup>REVISED</sup> LOTS 11 & 12, ID/027677, P.B. 24-321 10/24/02  
 LOTS 52-67 P.B. 21, Pg. 140 8/86  
 REVISED LOTS 52 & 53, ID/048971, P.B. 25, Pg. 279 11/12/04
- ③ PARRISH TRACT II  
 TRACT 51, P.B. 21, Pg. 221 10/86  
 TRACTS 68-82 P.B. 21, Pg. 205  
 TRACTS 83-95 P.B. 21, Pg. 203  
 TRACTS 96-99 P.B. 21, Pg. 204, VACATED DB 314-528, 10/86  
 TRACTS 93A-97A RESUBDIVISION OF 93-99 P.B. 21, Pg. 202 10/86  
 TRACT 51 Revised P.B. 22, Pg. 154 9/6/90  
 TRACT 72 & 72A P.B. 22, Pg. 525 5/18/92  
 TRACT 71 P.B. 25, Pg. 226 6/24/04

1" = 600"

12/86/87/90/92/95/97/02/03/04/08/13



WARE

DISTRICT

SECTION  
 INSERT **18C**

REVISED: