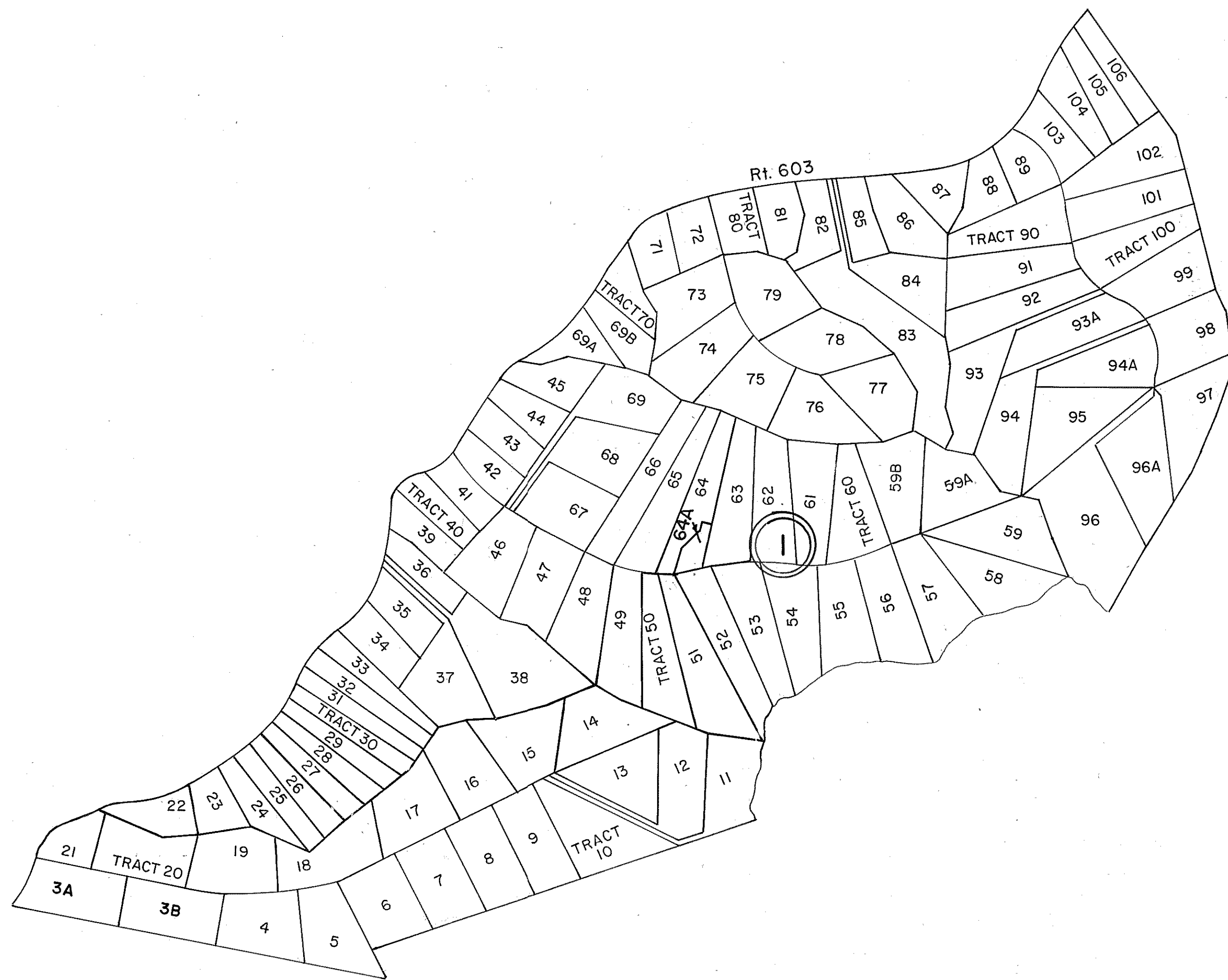


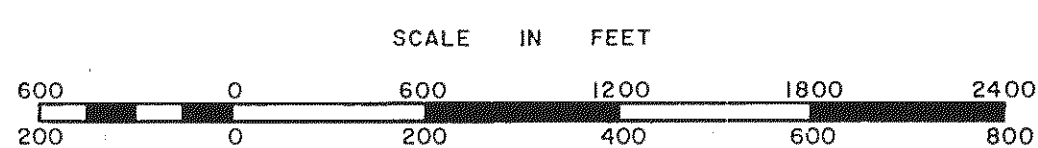
GLOUCESTER COUNTY



FIGG SHOP TRACT
P.B. 20, Pgs. 952, 962, 976, 983, 986 & 1000
1985

REVISED LOT 64-P.B. 23, Pg. 9 10/25/95
REVISED LOT 64-P.B. 23, Pg. 9 11/13/95
REVISED TRACT 20 ID/993561 5/19/99
REVISED TRACT 3 ID/027671 P.B. 24, Pg. 320 10/24/02

SCALE 1" = 600' 12/85/91/92/95/99/02



WARE DISTRICT

SECTION
INSERT 19C

REVISED: