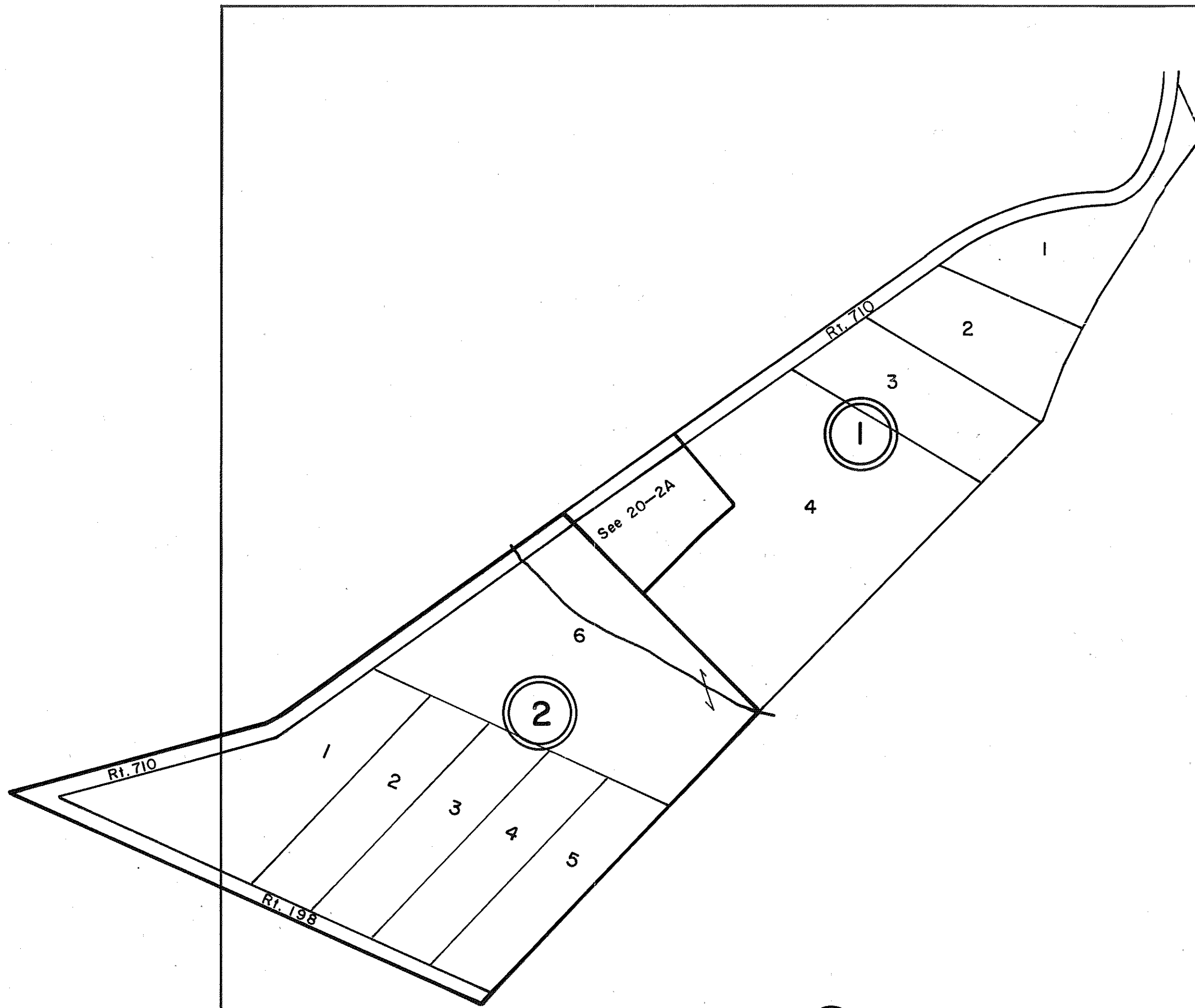


GLOUCESTER COUNTY



- ① DANCING CREEK SUBDIVISION
LOTS 1-4 P.B.22, Pg.90
5/24/90
- ② DUTTON FARMS SUBDIVISION
LOTS 1-6 P.B. 22, Pg.625
10/30/92

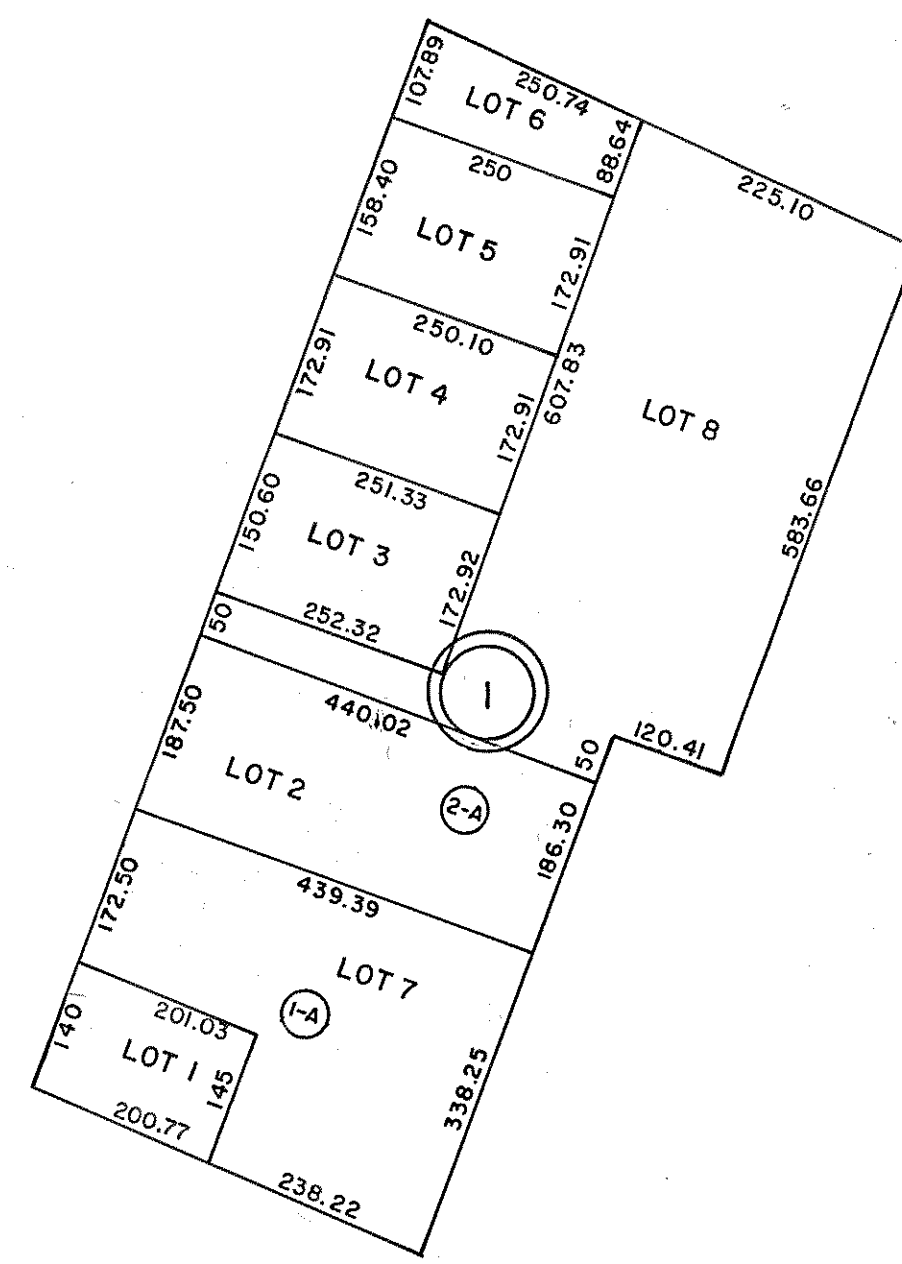
REV. 12/87

PETSWORTH

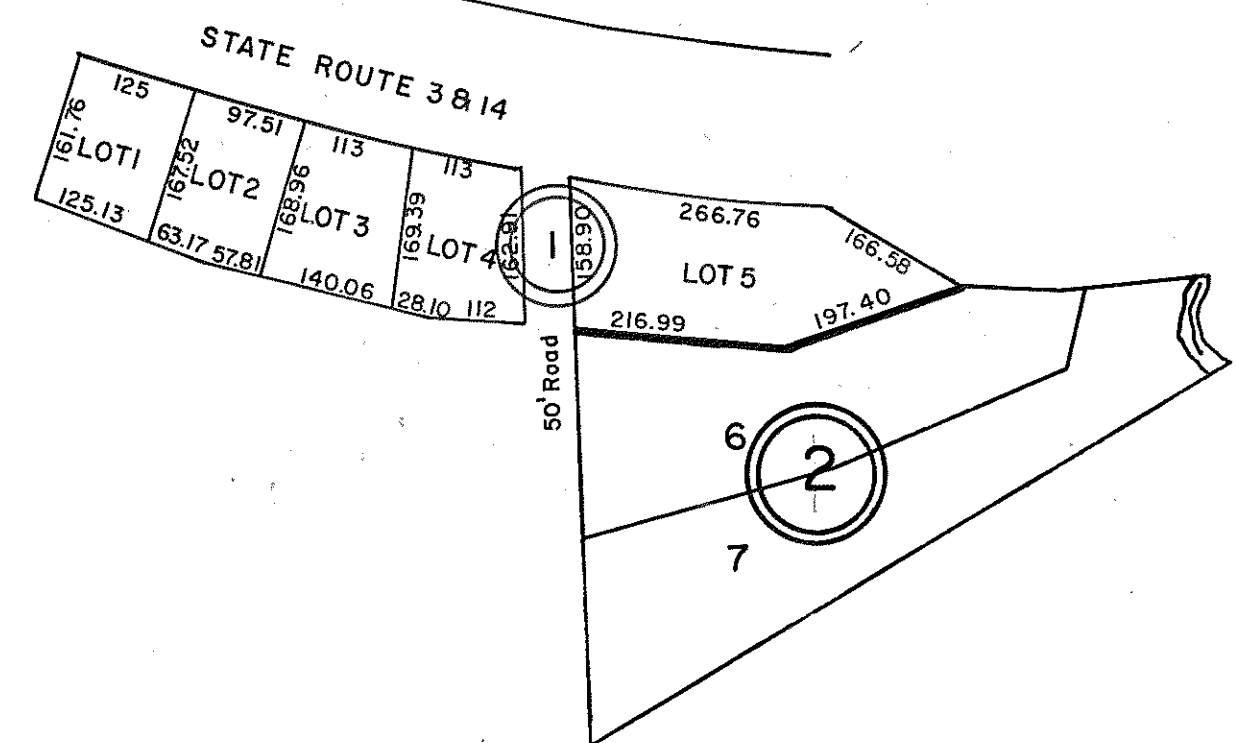
INSERT 20C

PETSWORTH

INSERT 20B



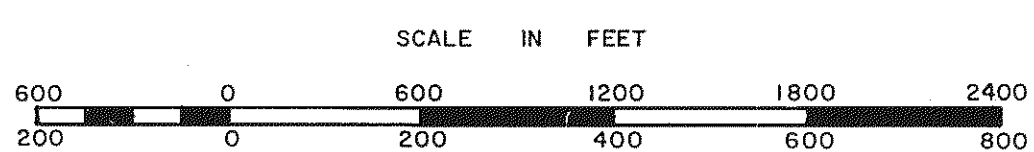
- ① LESTER'S LANDING
SECTION 1, P.B. 20, pg. 93
RESUBDIVISION LOT 2&7 3/87
PB.21, Pg. 368



- ① COUNTY-LINE SUBDIVISION
P.B. 20, pg.117, LOTS 1-5
- ② COUNTY-LINE SUBDIVISION
P.B.21, Pg.417, LOTS 6&7, 1986
5/87

REV. 12/87 WARE

INSERT 20A



PETSWORTH & WARE DISTRICT

SECTION INSERT 20A,B,C