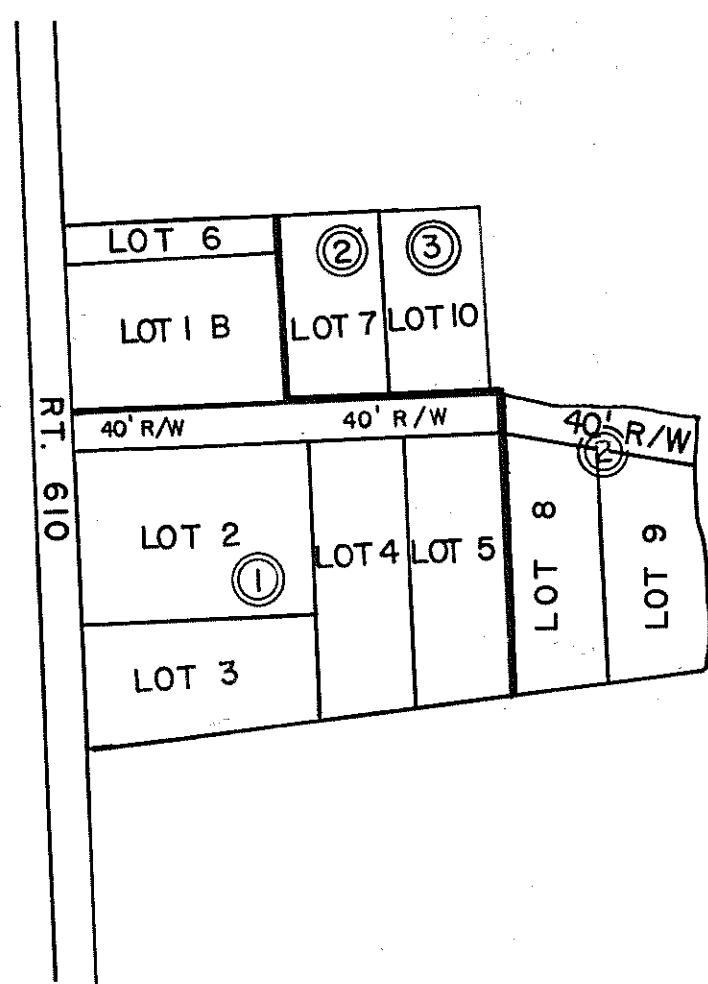
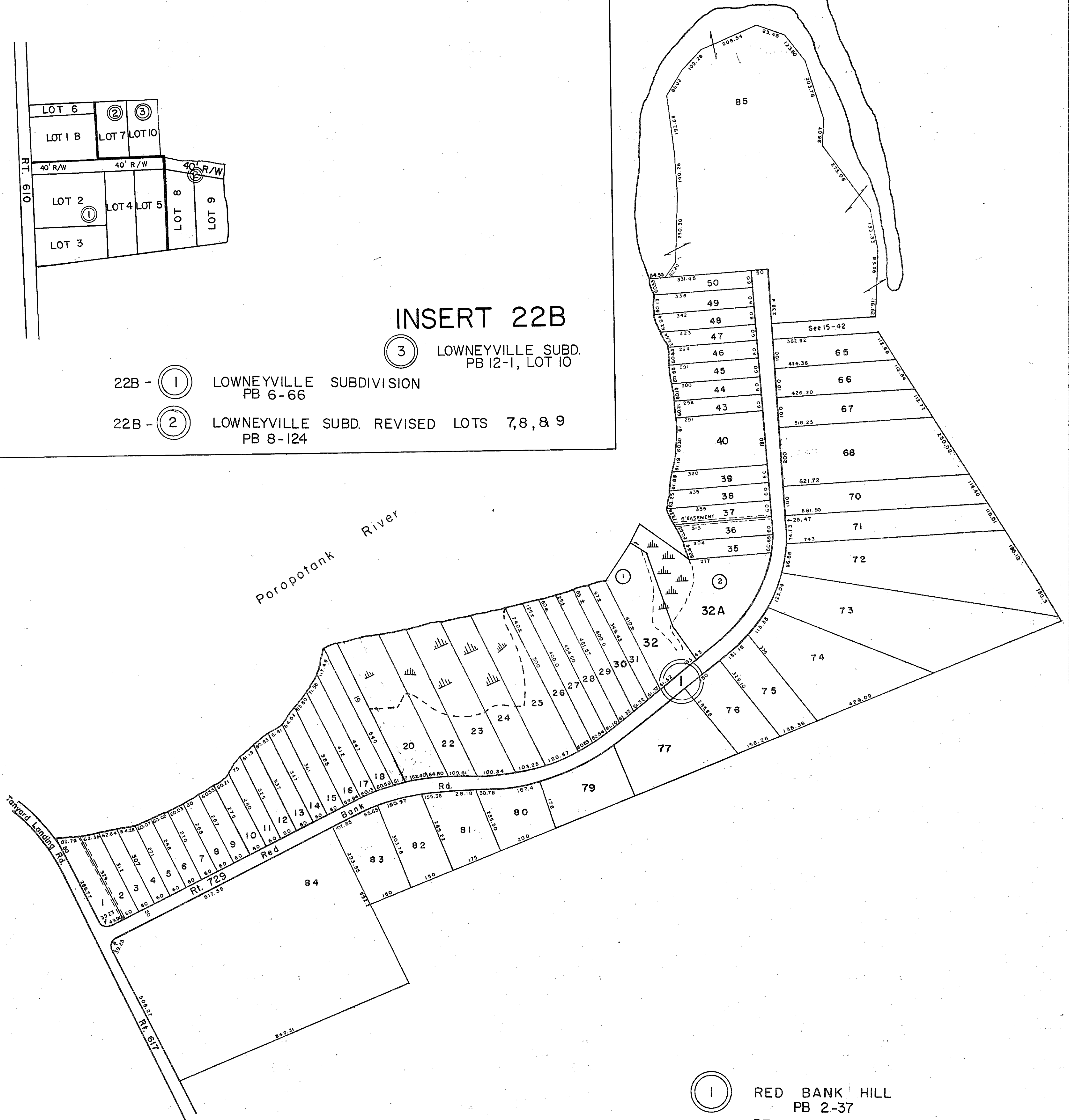


GLOUCESTER COUNTY



INSERT 22B

- 22B - (1) LOWNEYVILLE SUBDIVISION
PB 6-66
- 22B - (2) LOWNEYVILLE SUBD. REVISED LOTS 7,8, & 9
PB 8-124
- (3) LOWNEYVILLE SUBD.
PB 12-1, LOT 10



- (1) RED BANK HILL
PB 2-37
REVISION 5/9/59
LOTS 19 THRU 32A
PB 2-237
REVISION LOT 4, 7/31/87 PB 21-493
REVISION LOT 69, 12/3/87 PB 21-615
REVISION LOT 32, 32A 5/29/91 PB 22-322, 322 A
REVISION LOTS 40, 41, 42 5/17/96 P.B. 23-125
REVISION LOTS 77, 78, 79 1/24/06 PB. 25-465
REVISION LOTS 68, 69, 4/25/13 PB. 26-258

REV. 1/63 ; 12/75, 12/31/83/84/85/87/88/91/92/96/06/12/13



PETSWORTH DISTRICT

VA. STATE DEPT. OF TAXATION, DIVISION OF REAL ESTATE APPRAISAL AND MAPPING

INSERT 22A, 22B