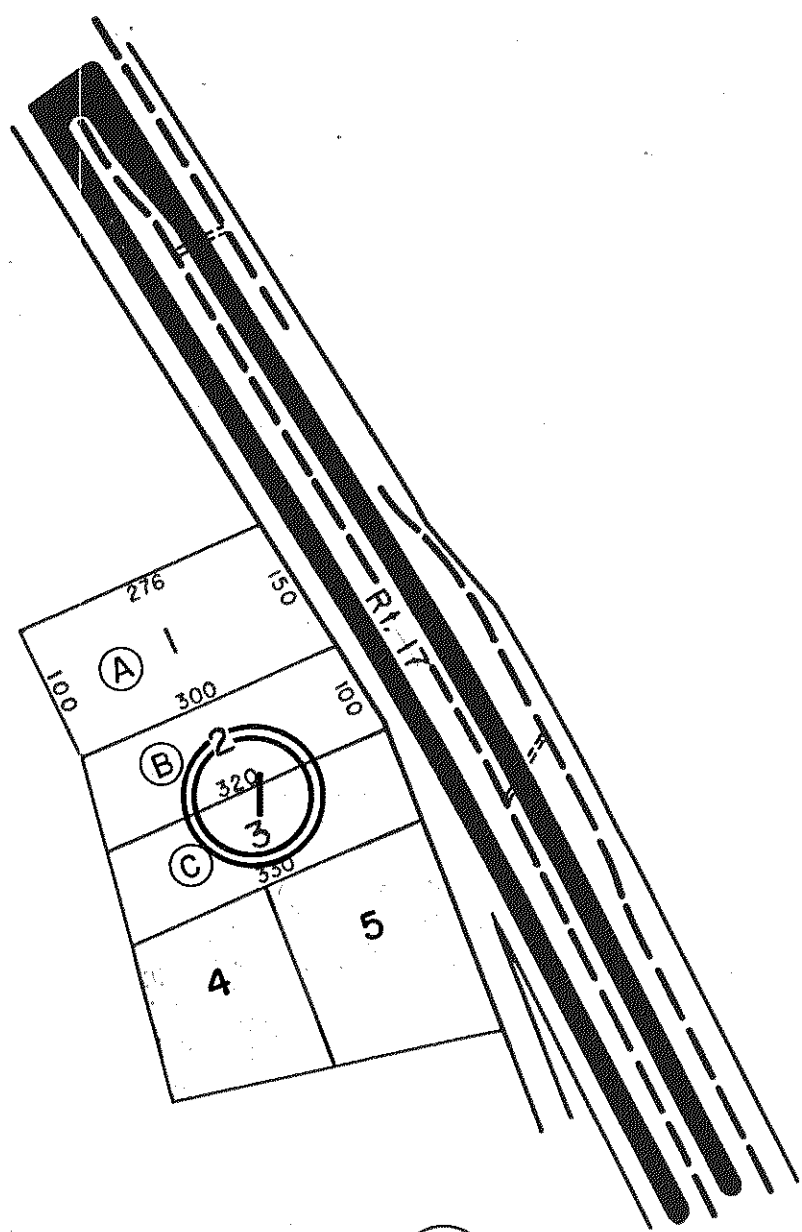
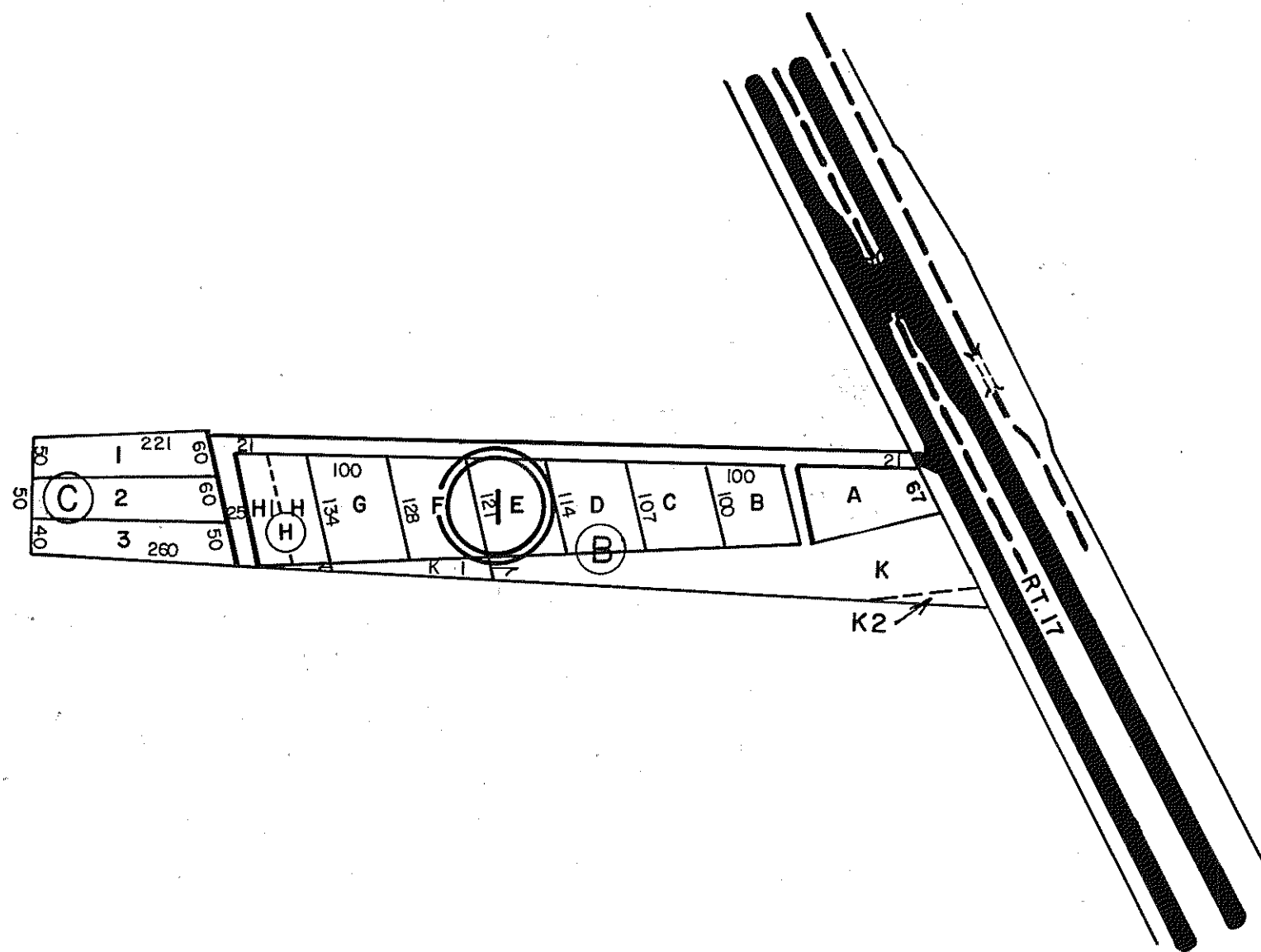


GLOUCESTER COUNTY



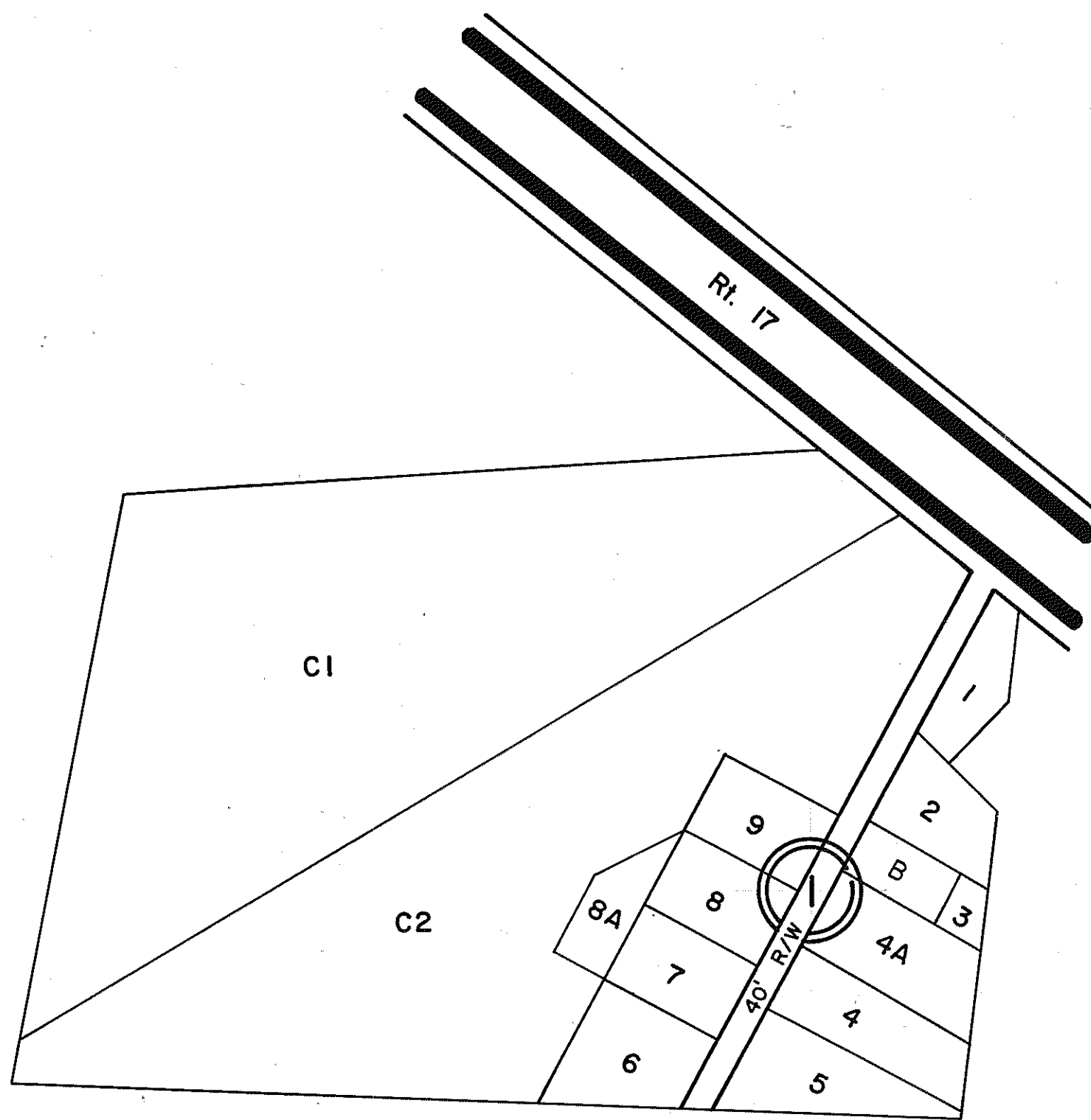
① HORACE T. LEMON ET UX.
 P.D.B. 99, Pg. 238
 REVISED LOTS 4 & 5, P.B. 25, Pg. 644
 4/27/07

INSERT 24B



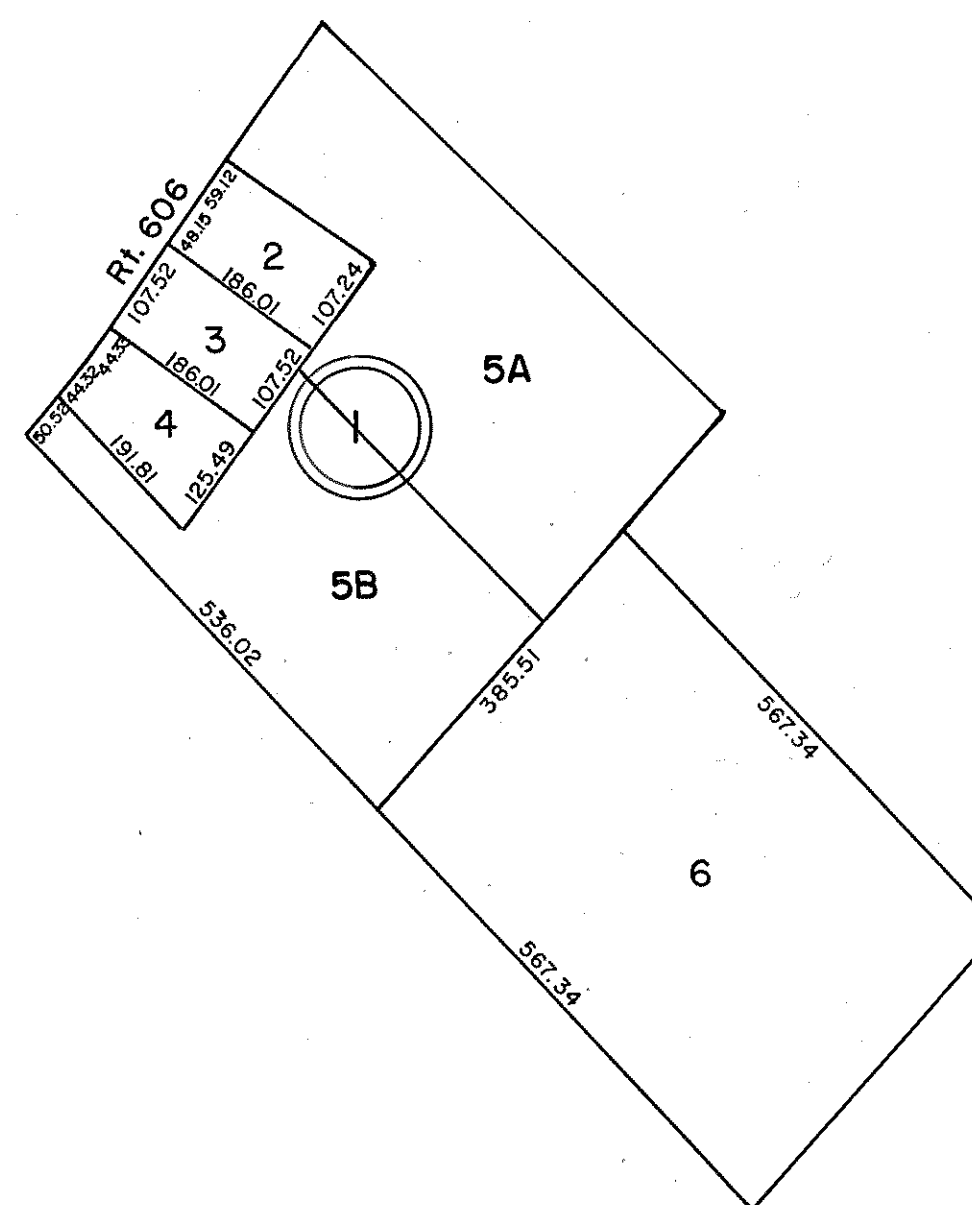
"SEAWELL"
 ① SUBDIVISION PLAT OF BLOCKS
 A B C P.D.B. 74, Pg. 349
 REVISED LOTS I & J, P.B. 24-319, 10/23/02
 P.B. 25-310 2/2/05

INSERT 24A



① THOMAS W. HOWARD LOTS
 P.B. 12-4, LOTS 1-9 & TRACTS B,C
 LOT 8A, P.B. 21, Pg. 386 3/87
 TRACT 'C' REVISED P.B. 22, Pg. 663-1/11/93

INSERT 24E



① RENIE D. GORDON LOTS
 P.B. 16, Pg. 31 LOTS 1-6
 Revised Lots 1 & 5, P.B. 25/274, 10/26/04

INSERT 24G

REV. 12/77 & 12/79/87/88/92/93/02/04
 REV. 1/63



WARE DISTRICT

VIRGINIA STATE DEPARTMENT OF TAXATION, DIVISION OF REAL ESTATE APPRAISAL AND MAPPING

INSERT 24A, B, E, G

REVISED: 9/8/71; 12/75; 3/80; 12/31/83/84/07