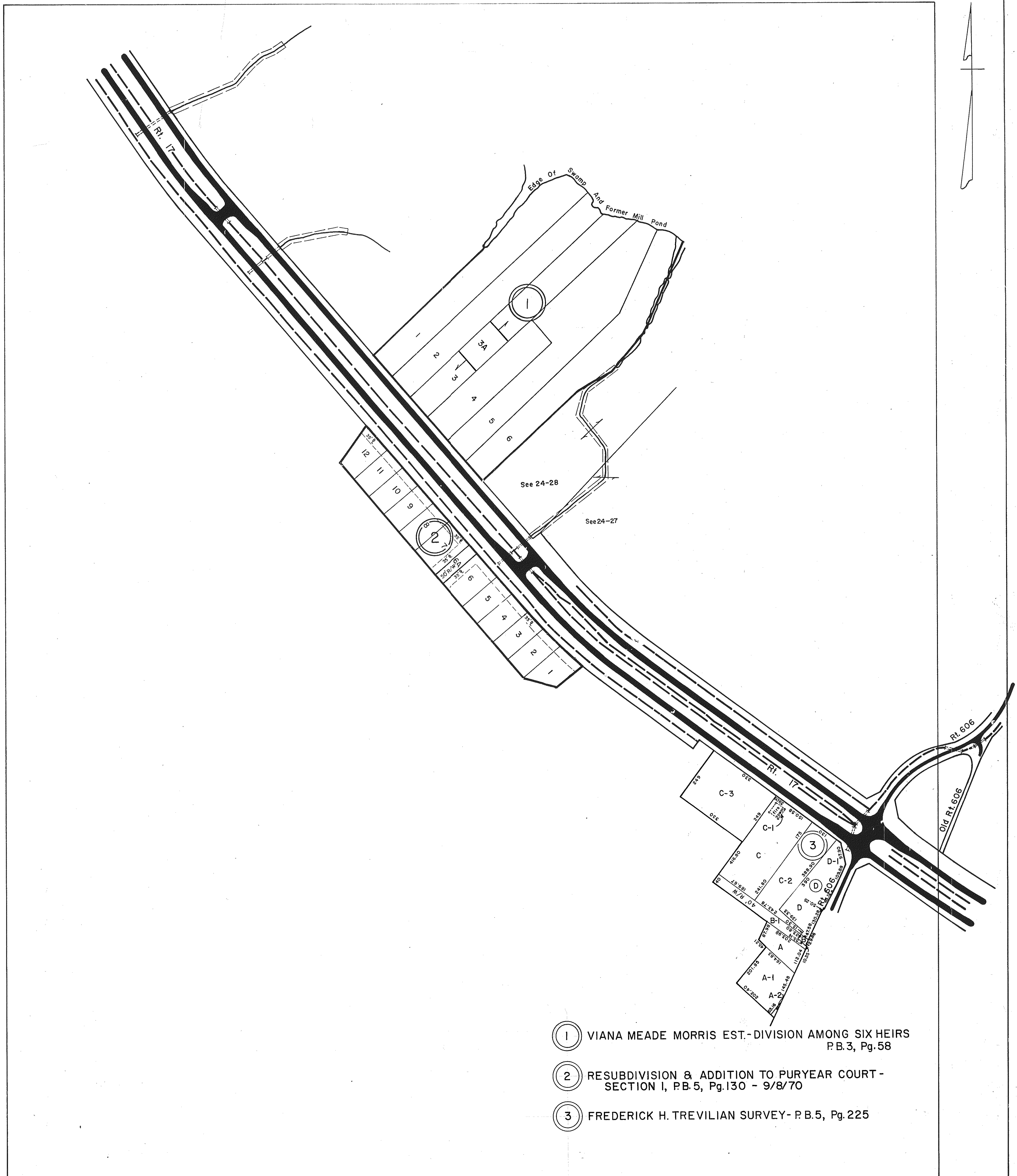


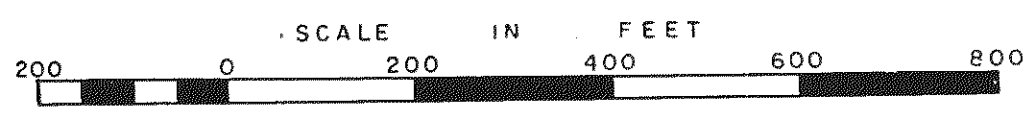
GLOUCESTER COUNTY



- ① VIANA MEADE MORRIS EST.-DIVISION AMONG SIX HEIRS
P.B.3, Pg.58
- ② RESUBDIVISION & ADDITION TO PURYEAR COURT -
SECTION I, P.B.5, Pg.130 - 9/8/70
- ③ FREDERICK H. TREVILIAN SURVEY- P.B.5, Pg.225

REV. 1/63

VA. STATE DEPT. OF TAXATION, DIVISION OF REAL ESTATE APPRAISAL AND MAPPING



PETSWORTH DISTRICT

INSERT 24C