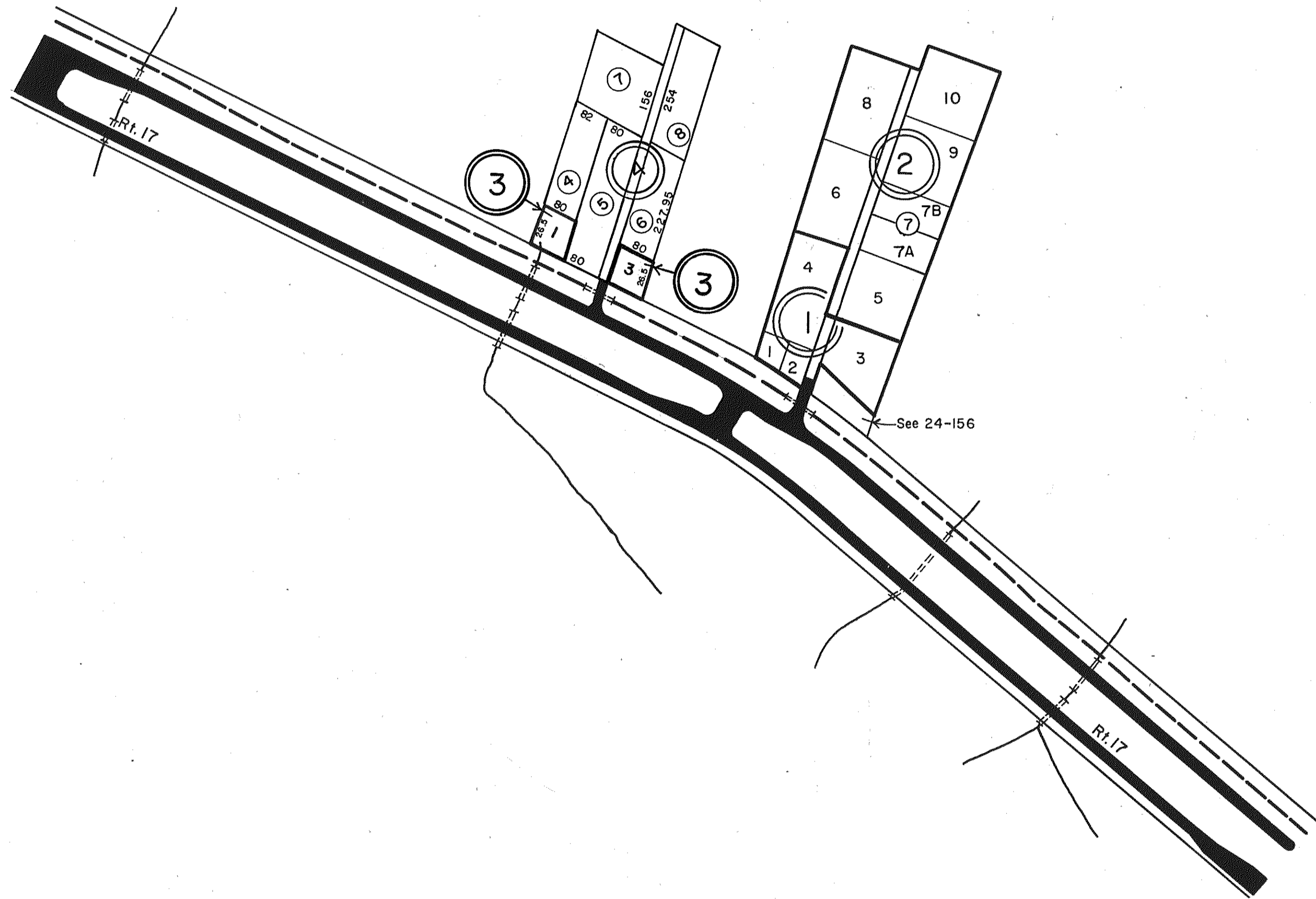


GLOUCESTER COUNTY



- ① MAUDE HOLMES LOTS 1,2,3,4 -PB.2,Pg.395
- ② MAUDE HOLMES PLAT-PB.3,Pg.231-PB.3-239
- ③ HALLIE O. LEMONS PLAT-PB.4,Pg.20  
Revised Lot 2,P.B.25-416, 9/29/05
- ④ HALLIE O. LEMONS PLAT-PB.7-183  
Revised Lot 5,P.B.25-416, 9/29/05



WARE & PETSORTH DISTRICTS

INSERT 24D