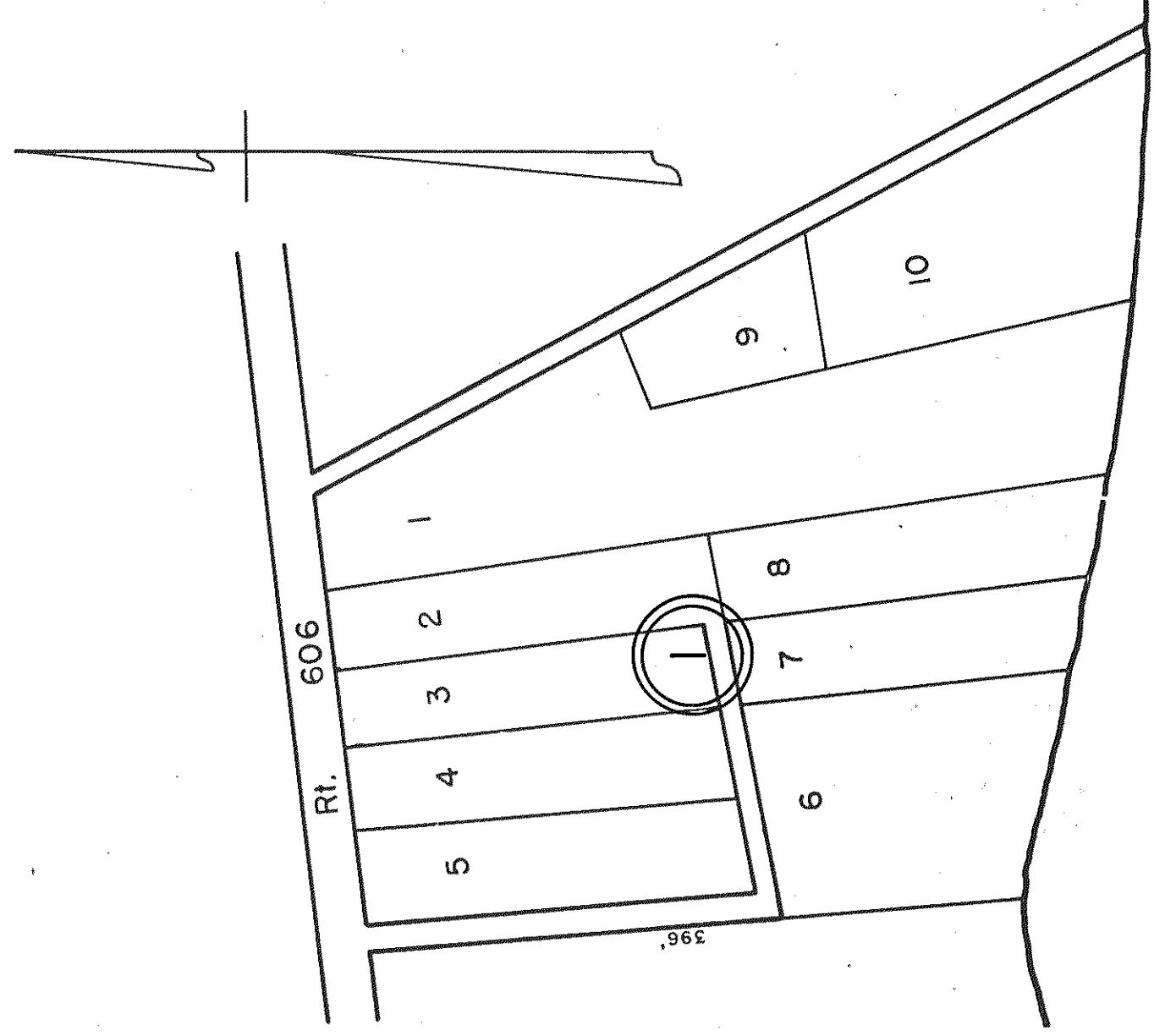
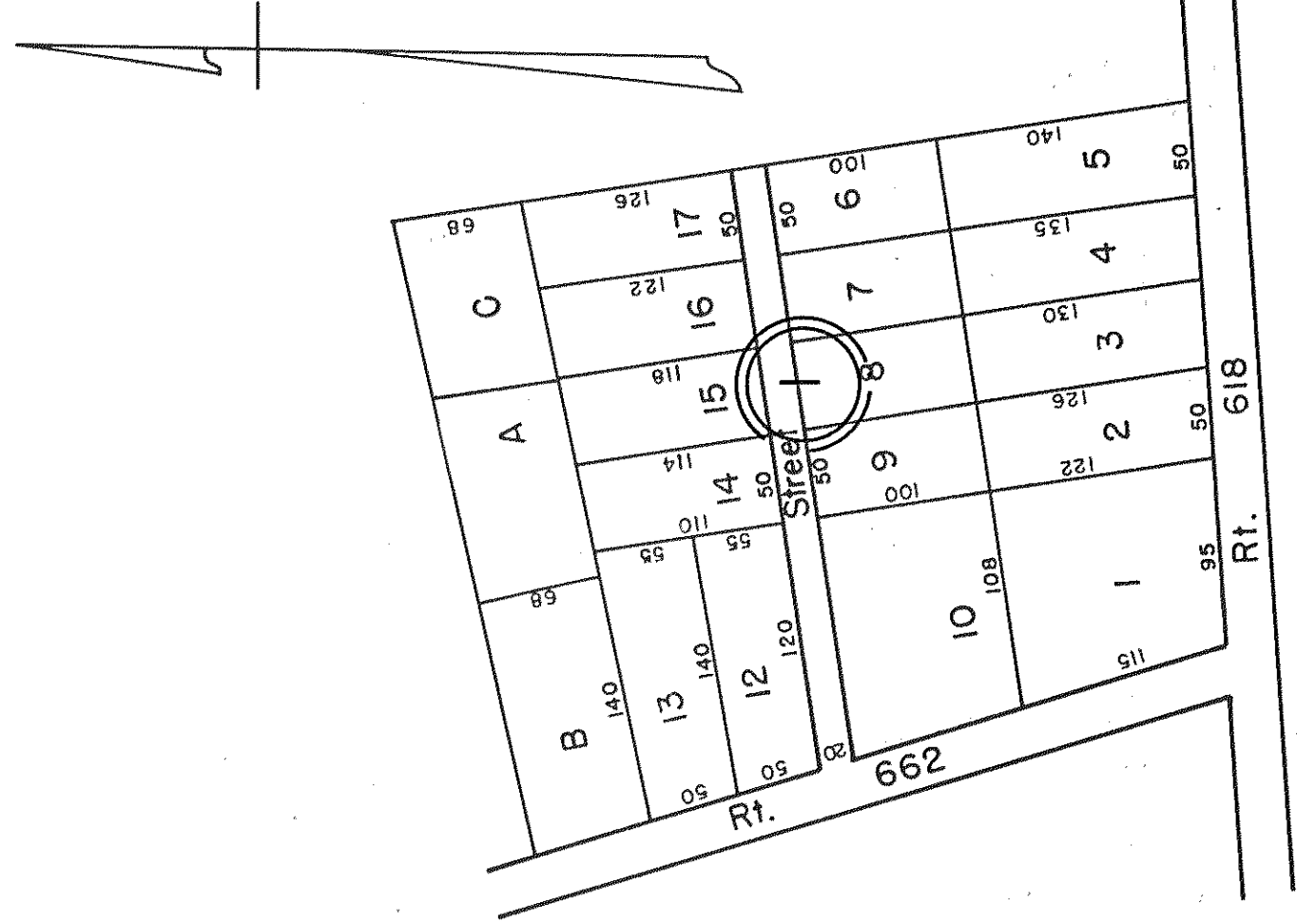


GLOUCESTER COUNTY



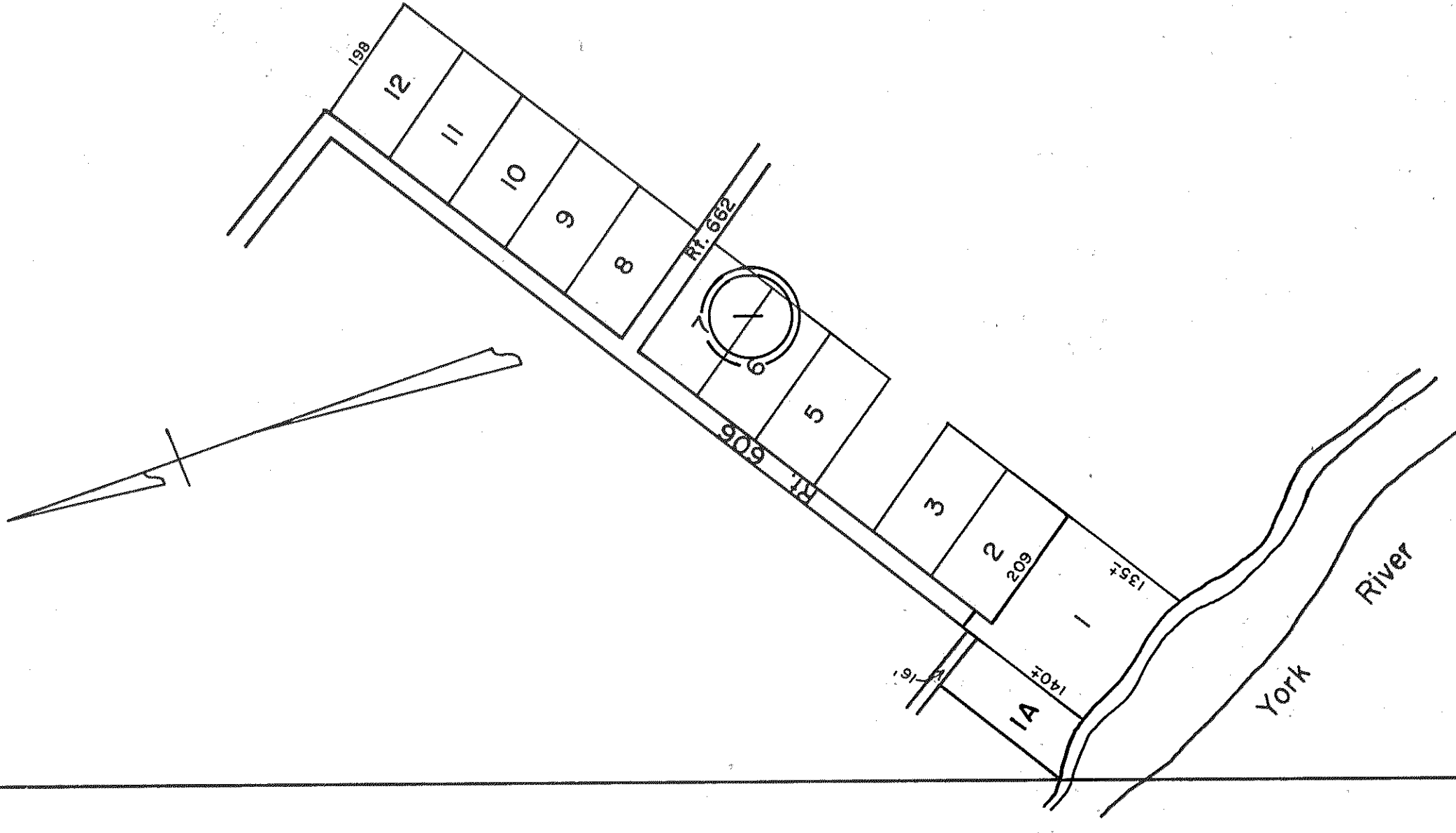
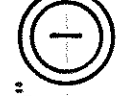
INSERT 29A
 SASSAFFRAS
 P.D.B.72, Pg. 262

APPROXIMATE SCALE: 1"=100'



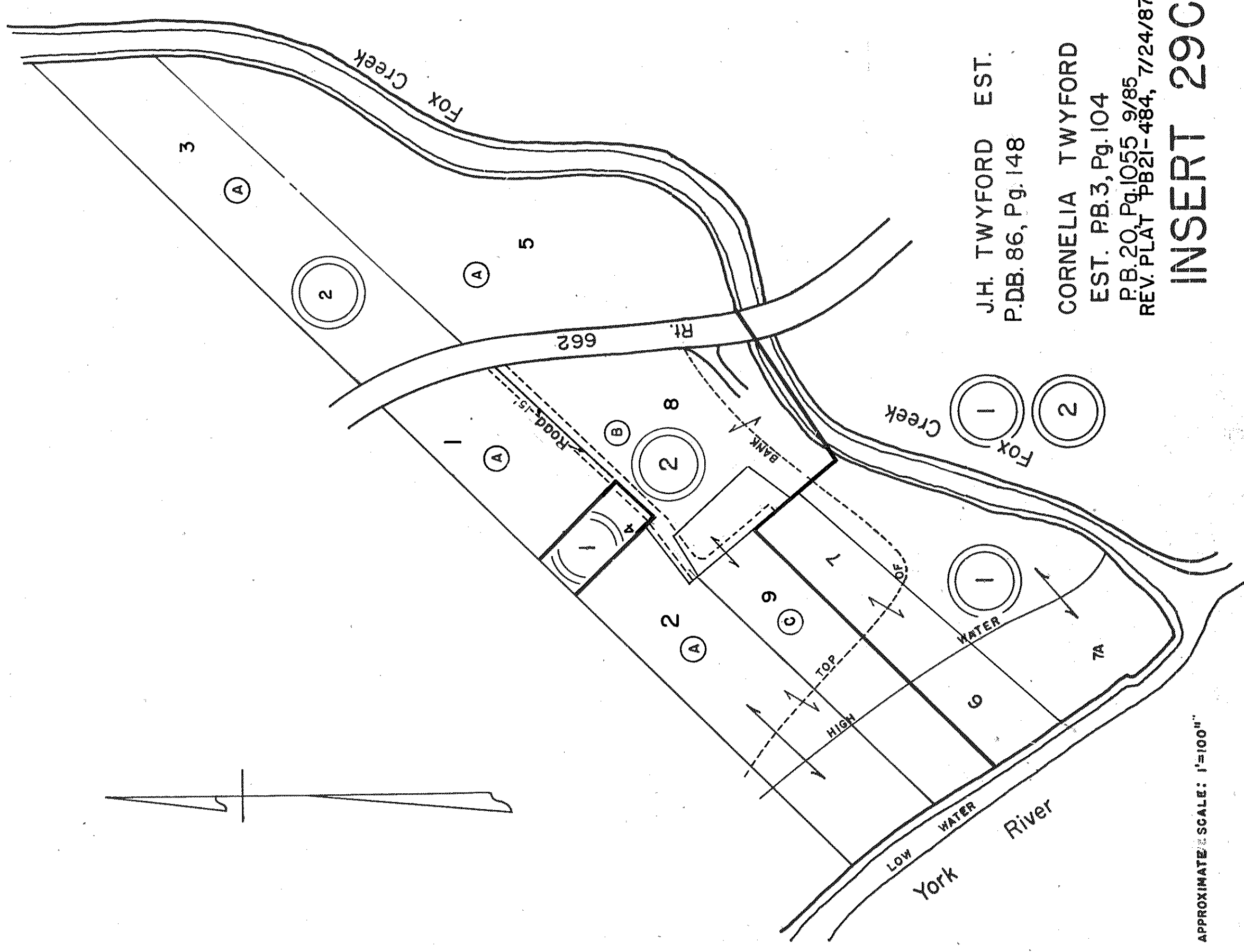
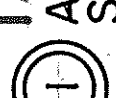
INSERT 29B
 CAPAPOSIC
 P.D.B.84, Pg. 192
 LOT 10 & 11 REVISED PB.23-186 9/23/96

APPROXIMATE SCALE: 1"=100'



INSERT 29D
 ALMONDSVILLE
 S.P.B. 4, Pg. 22
 Revised Lot 4, PB.24-203 2/1/02

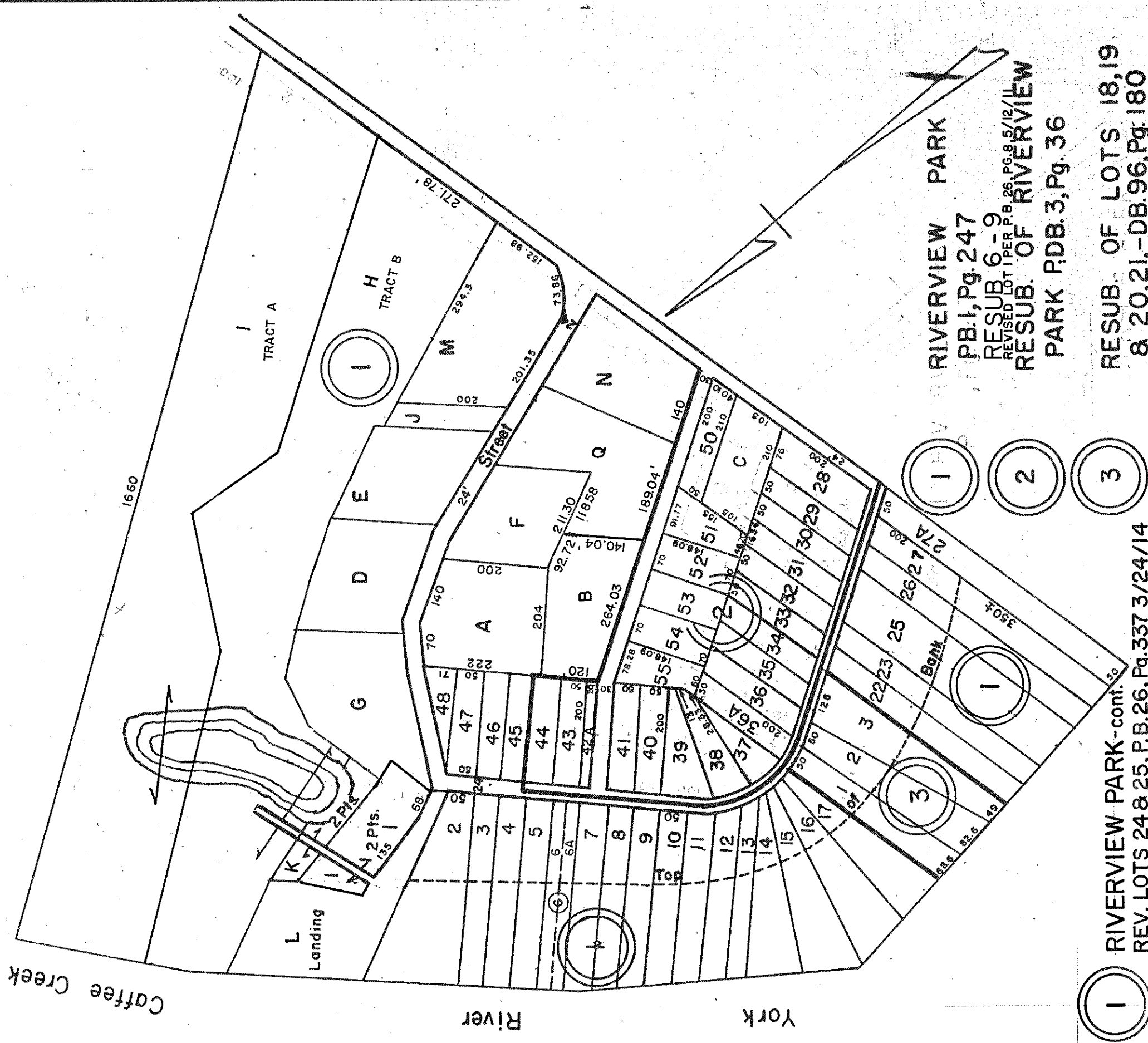
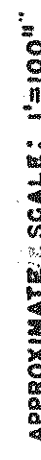
APPROXIMATE SCALE: 1"=200'



J.H. TWYFORD EST.
 P.D.B. 86, Pg. 148
 CORNELIA TWYFORD
 EST. PB.3, Pg. 104
 P.B. 20, Pg. 1055 8/85
 REV. PLAT. PB.21-484, 7/24/87

INSERT 29C

APPROXIMATE SCALE: 1"=100'



RIVERVIEW PARK
 P.B.1, Pg. 247
 RESUB. OF LOT 1, P.B. 6-9
 REVISED LOT 1, P.B. 6-9 5/12/10
 RESUB. OF RIVERVIEW
 PARK P.D.B.3, Pg. 36
 RESUB. OF LOTS 18, 19
 & 20, 21, -DB.96, Pg. 180
 LOT 42 - ROAD

INSERT 29E

APPROXIMATE SCALE: 1"=200'



REV. 1/63 ; 12/75, 12/31/83/84/85/87/88/92/95/96 / 97/98/02/11/14



SCALE IN FEET
 0 100 200 300 400

SEE EACH INDIVIDUAL PLAN

PETSWORTH DISTRICT

**INSERT 29A, 29B,
 29C, 29D, 29E**

VIRGINIA STATE DEPARTMENT OF TRANSPORTATION, FEDERAL AID ROAD AND BRIDGE