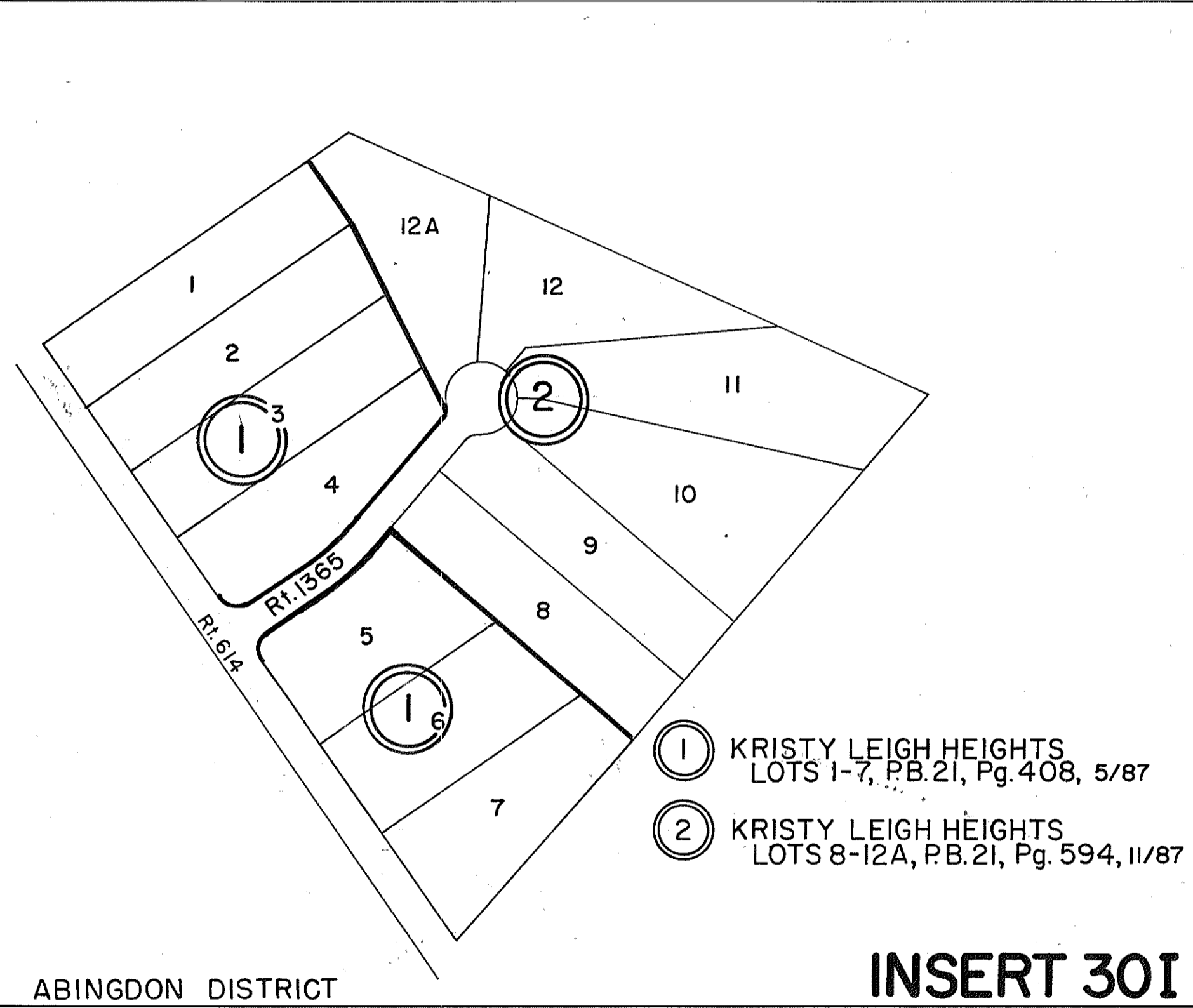


GLOUCESTER COUNTY

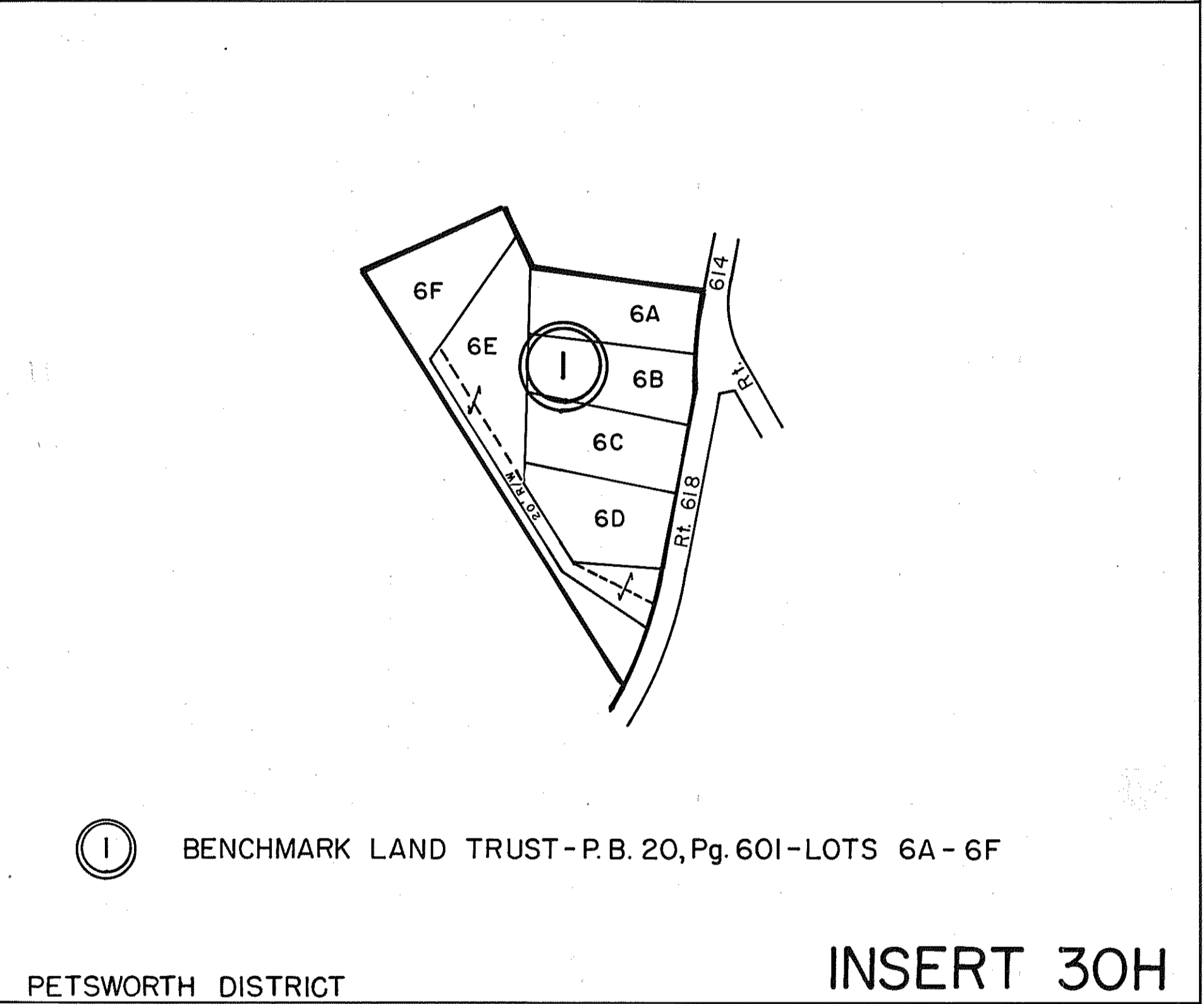


① KRISTY LEIGH HEIGHTS
LOTS 1-7, P.B. 21, Pg. 408, 5/87

② KRISTY LEIGH HEIGHTS
LOTS 8-12A, P.B. 21, Pg. 594, 11/87

ABINGDON DISTRICT

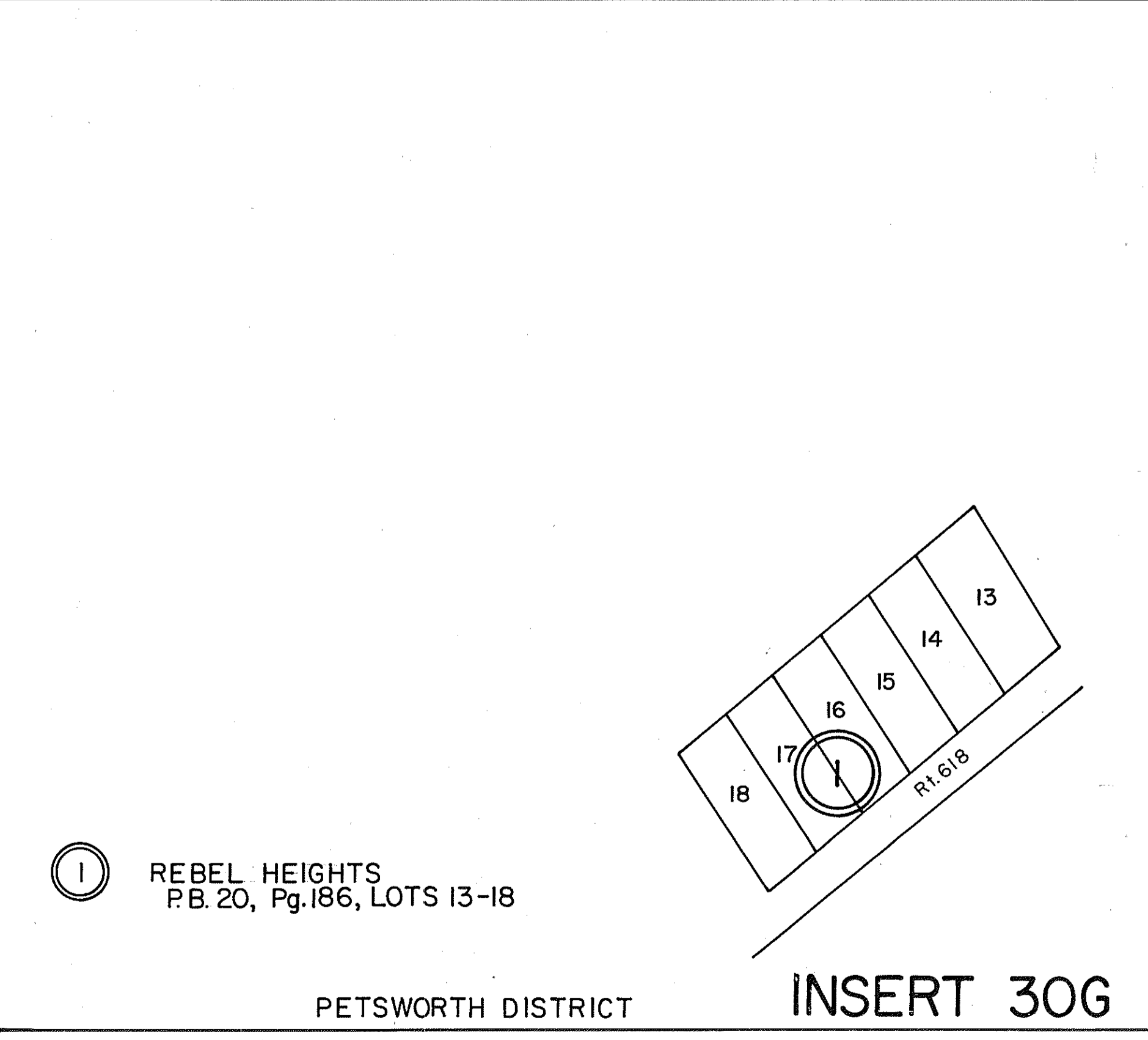
INSERT 30I



① BENCHMARK LAND TRUST - P.B. 20, Pg. 601 - LOTS 6A - 6F

PETSWORTH DISTRICT

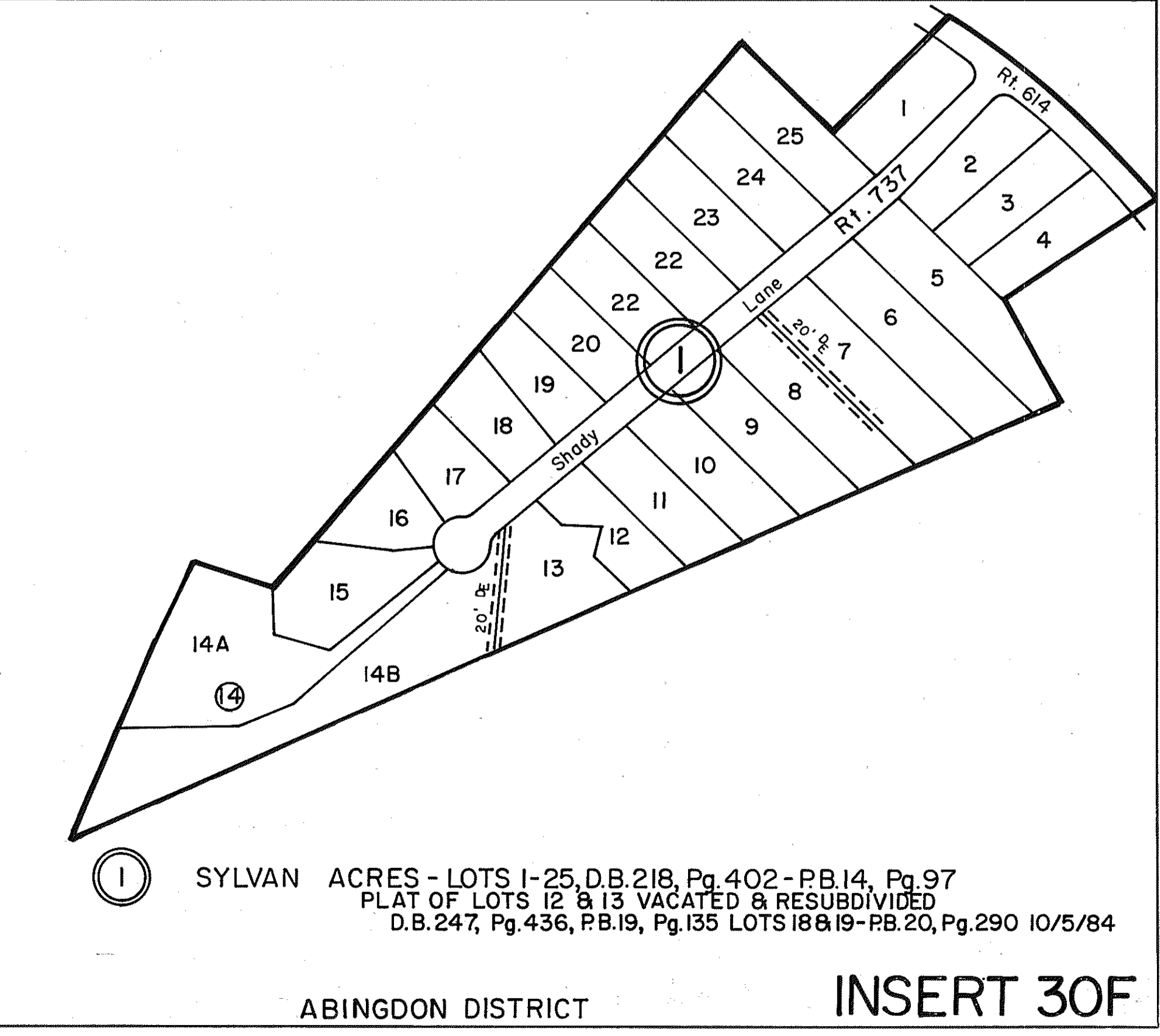
INSERT 30H



① REBEL HEIGHTS
P.B. 20, Pg. 186, LOTS 13-18

PETSWORTH DISTRICT

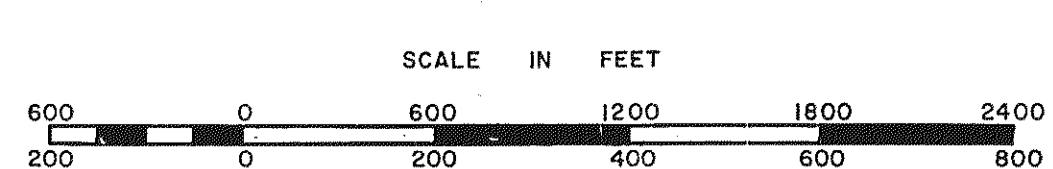
INSERT 30G



① SYLVAN ACRES - LOTS 1-25, D.B. 218, Pg. 402 - P.B. 14, Pg. 97
PLAT OF LOTS 12 & 13 VACATED & RESUBDIVIDED
D.B. 247, Pg. 436, P.B. 19, Pg. 135 LOTS 18 & 19 - P.B. 20, Pg. 290 10/5/84

ABINGDON DISTRICT

INSERT 30F



=====
=====
=====
DISTRICT

SECTION _____
INSERT **30F,G,H,I**