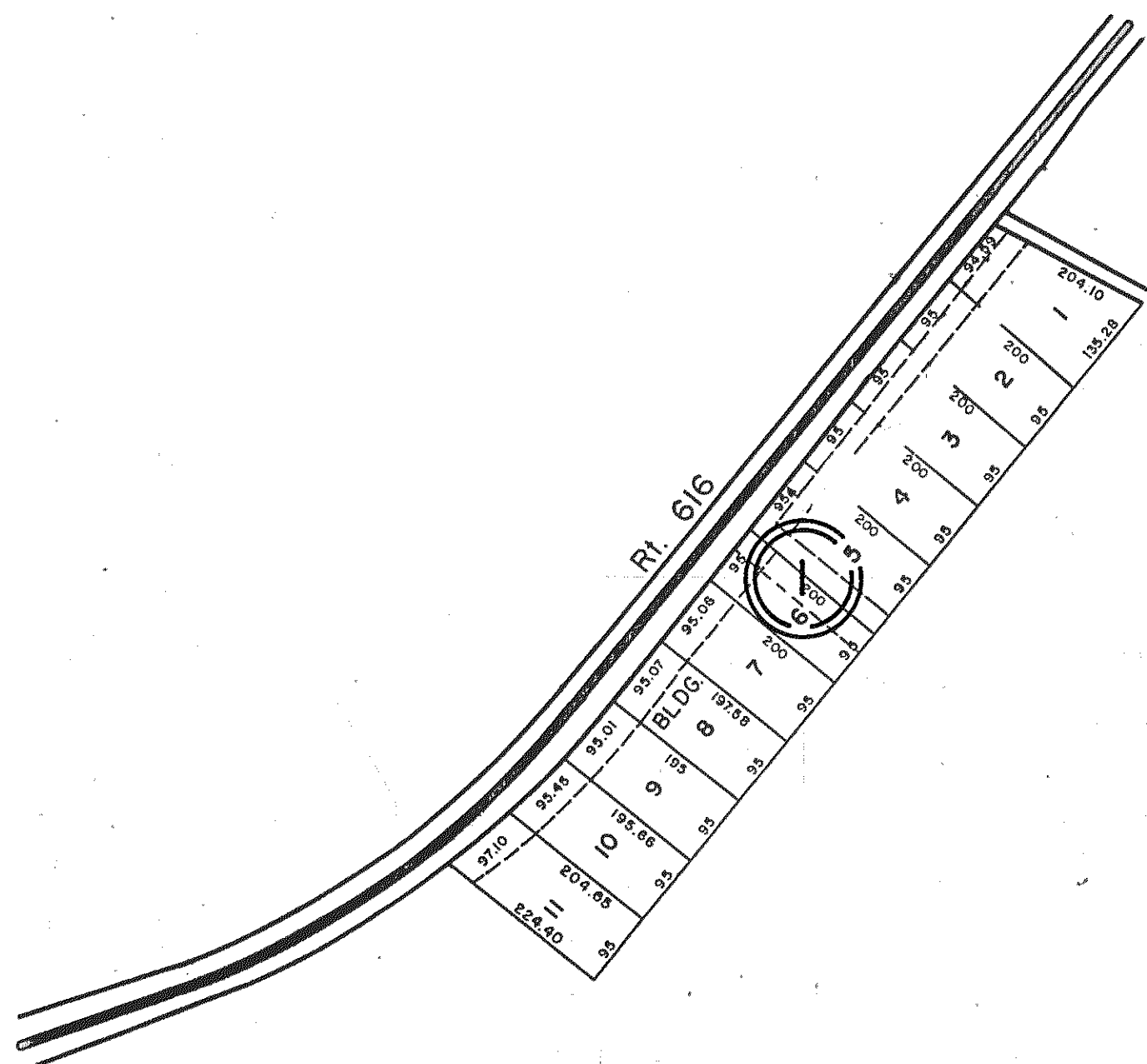
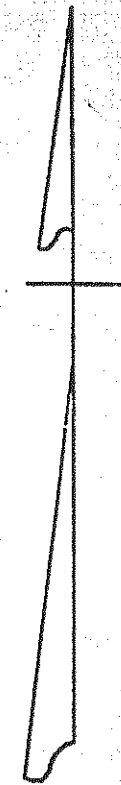


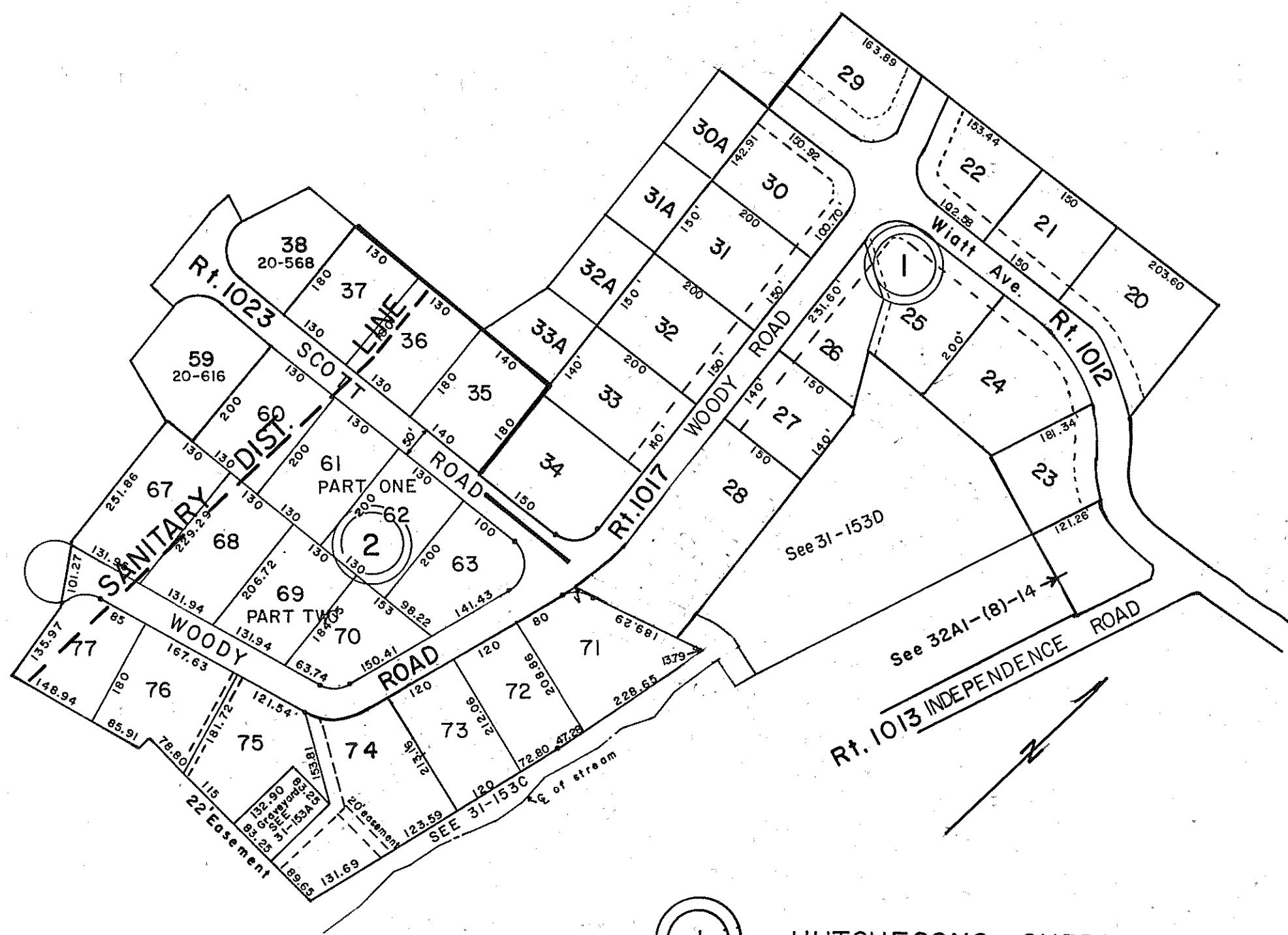
GLOUCESTER COUNTY



① SUMMERVILLE HOMES SUBDIVISION - SECTION 1
P.B. 2, Pg. 199

WARE DISTRICT

INSERT 31B



① HUTCHESONS SUBDIVISION
PLAT BOOK 3 pg. 337
P.B. 5-233 & PDB 178-100
PLAT DB 194, pg. 504
LOT 34 - P.B. 7, pg. 189 & DB 179, pg. 213
VACATION - PT. WATT AVE., P.B. 20, Pg. 758, 9/84
Revised Lot 29A, P.B. 24/330, 11/18/02
② HUTCHESONS SUBDIVISION - SECTION TWO
PART ONE & PART TWO - P.B. 10, pg. 110
SCOTT ROAD VACATED D.B. 316, Pg. 469 12/86
P.B. 21, Pg. 244
P.B. 21, Pg. 604, 11/87
Easement Removed, ID/046002, P.B. 25/246 7/28/04

WARE DISTRICT

INSERT 31C

REV. 1/63, 12/75, 12/76, 12/31/83/84/85/86/87/88/92/02/04/09/10/11
REV. 12/75, 12/76, 12/31/84/85/09/10/11



WARE DISTRICT

INSERT 31B.C.