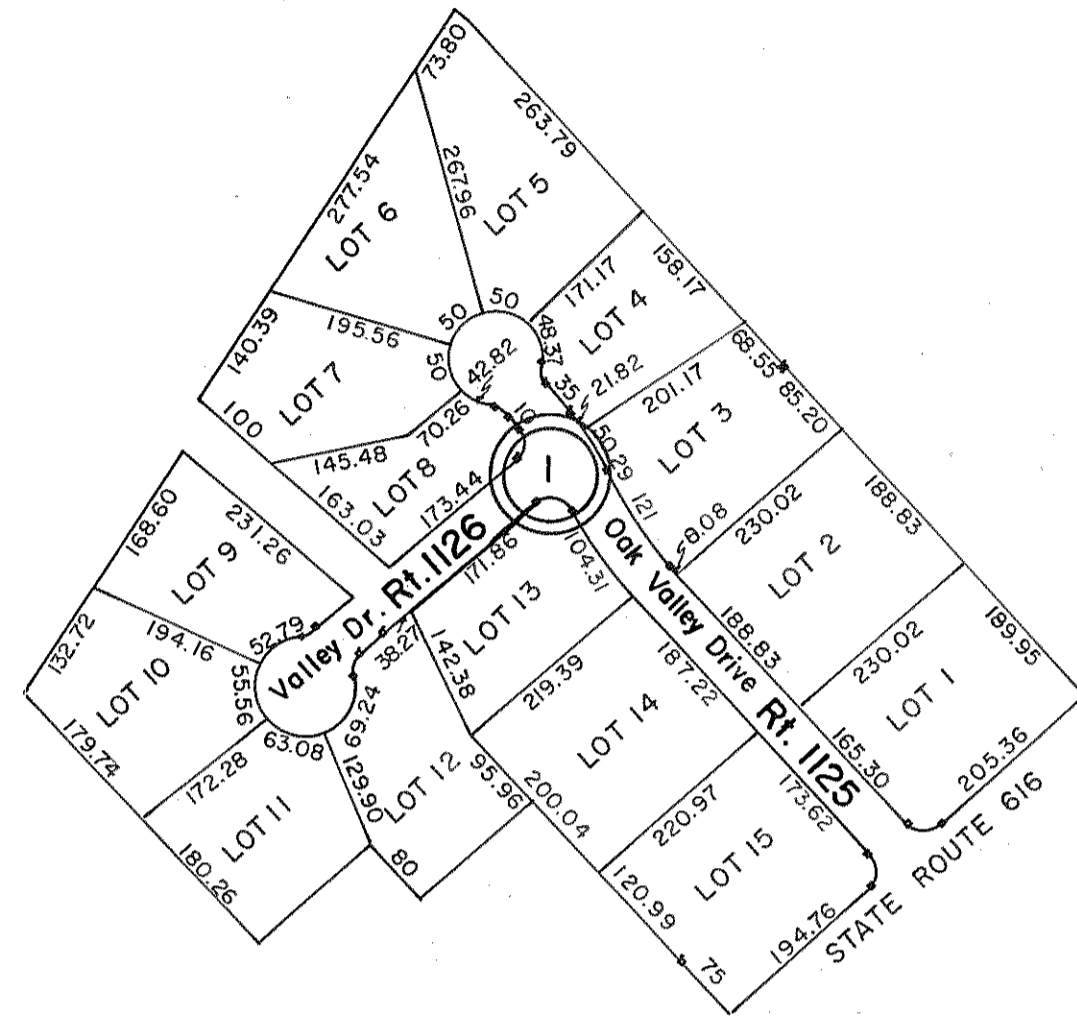
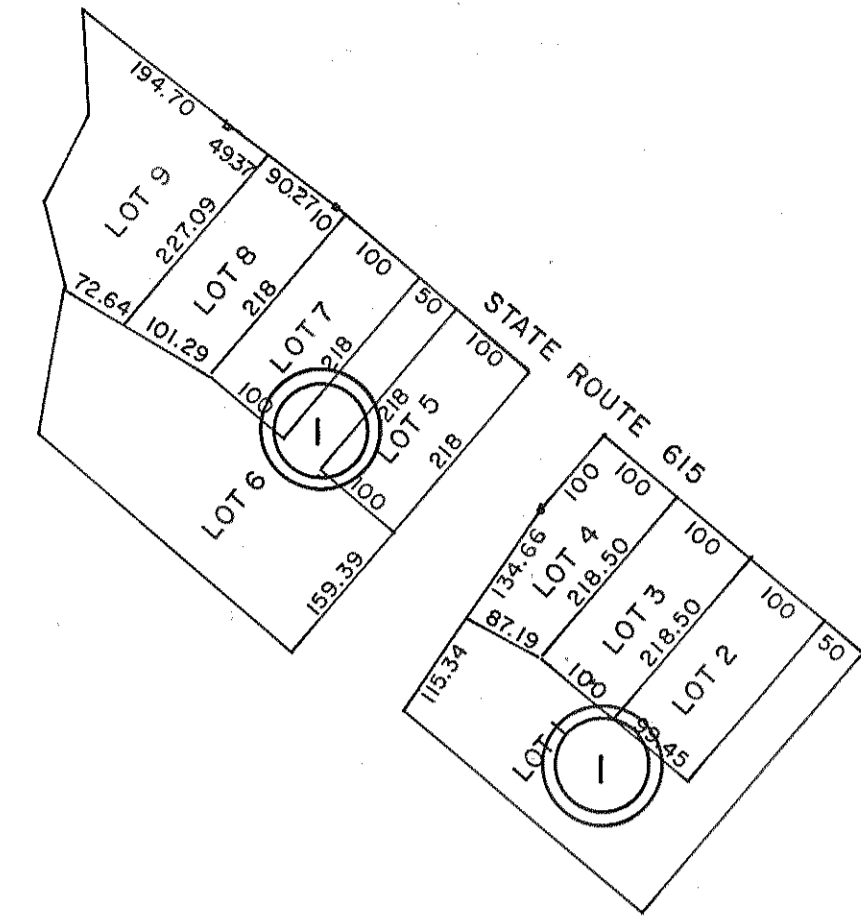


GLOUCESTER COUNTY



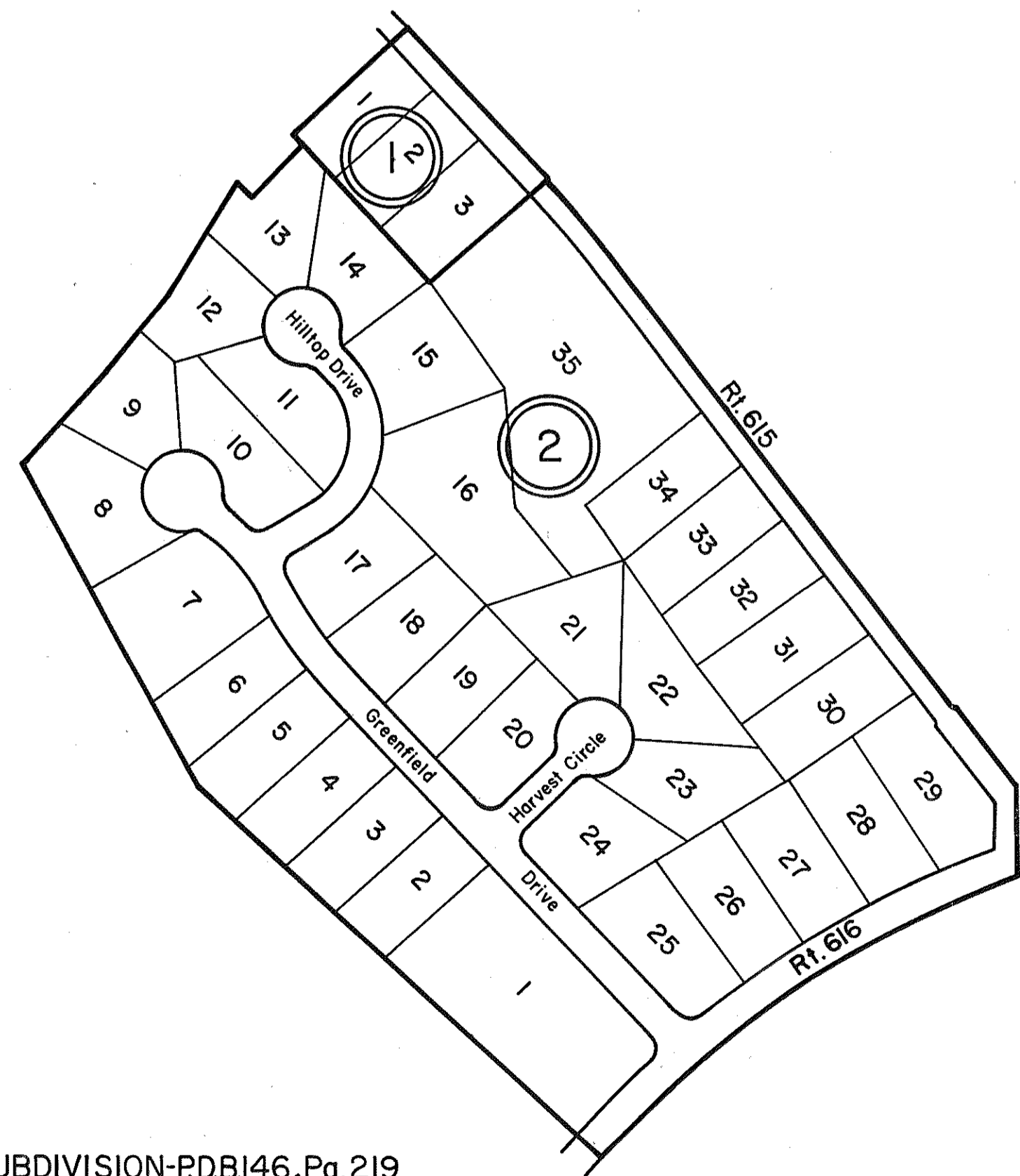
① OAK HILL
P.B. 20, Pg. 310
LOTS 1-15

INSERT 3I I



① EASTWOOD ESTATES
P.B. 20, Pg. 262
LOTS 1-9

INSERT 3I H

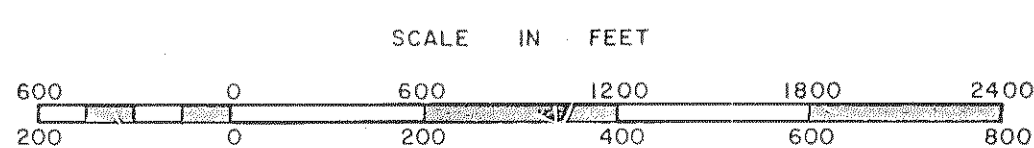


① CHESTNUT FORK SUBDIVISION-PDBI46, Pg. 219

② GREENFIELD - P.B. 20, Pg. 618, 618A 5-14-84

INSERT 3I D

ABINGDON DISTRICT



ABINGDON DISTRICT

SECTION
INSERT 3I D, H, I,