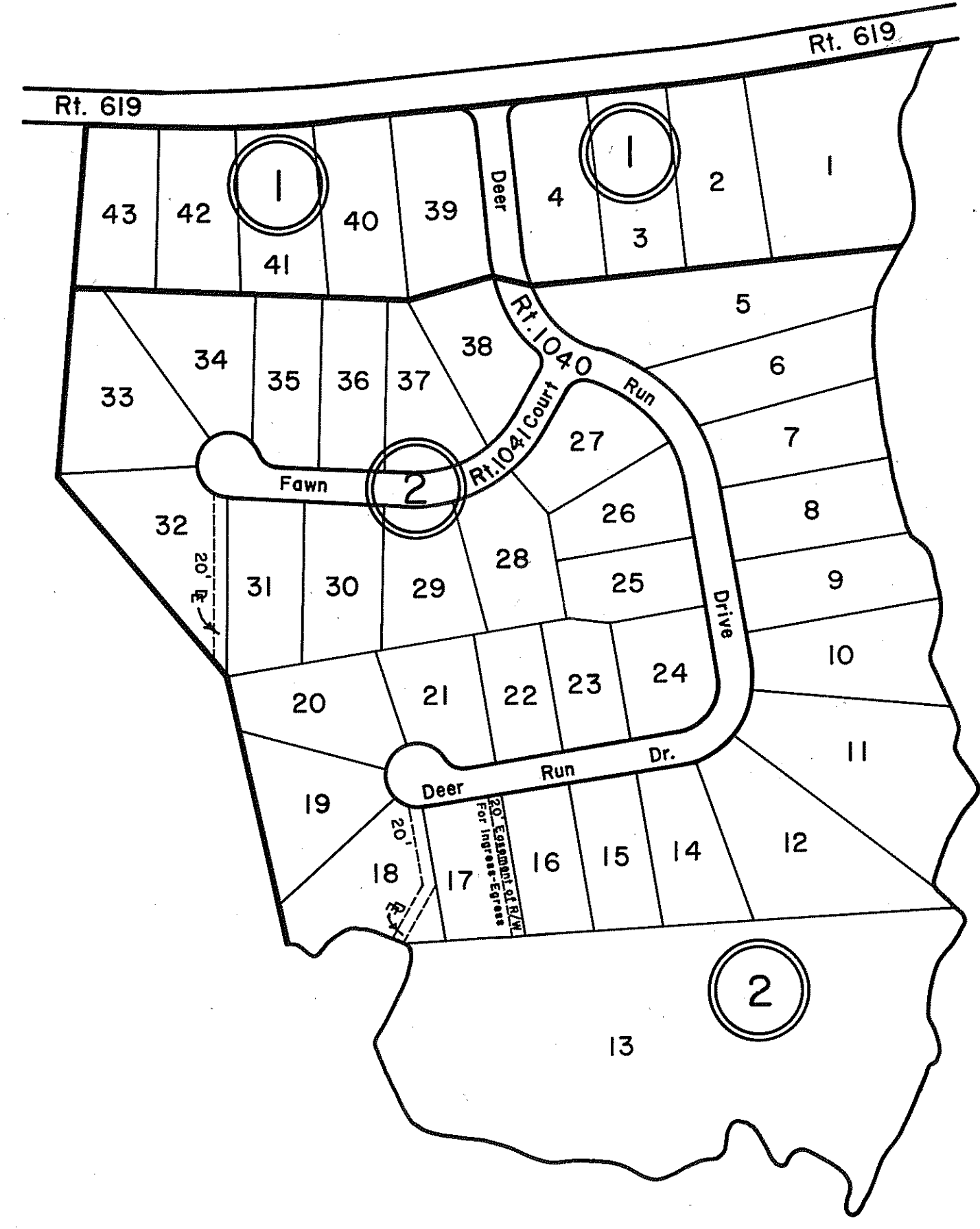
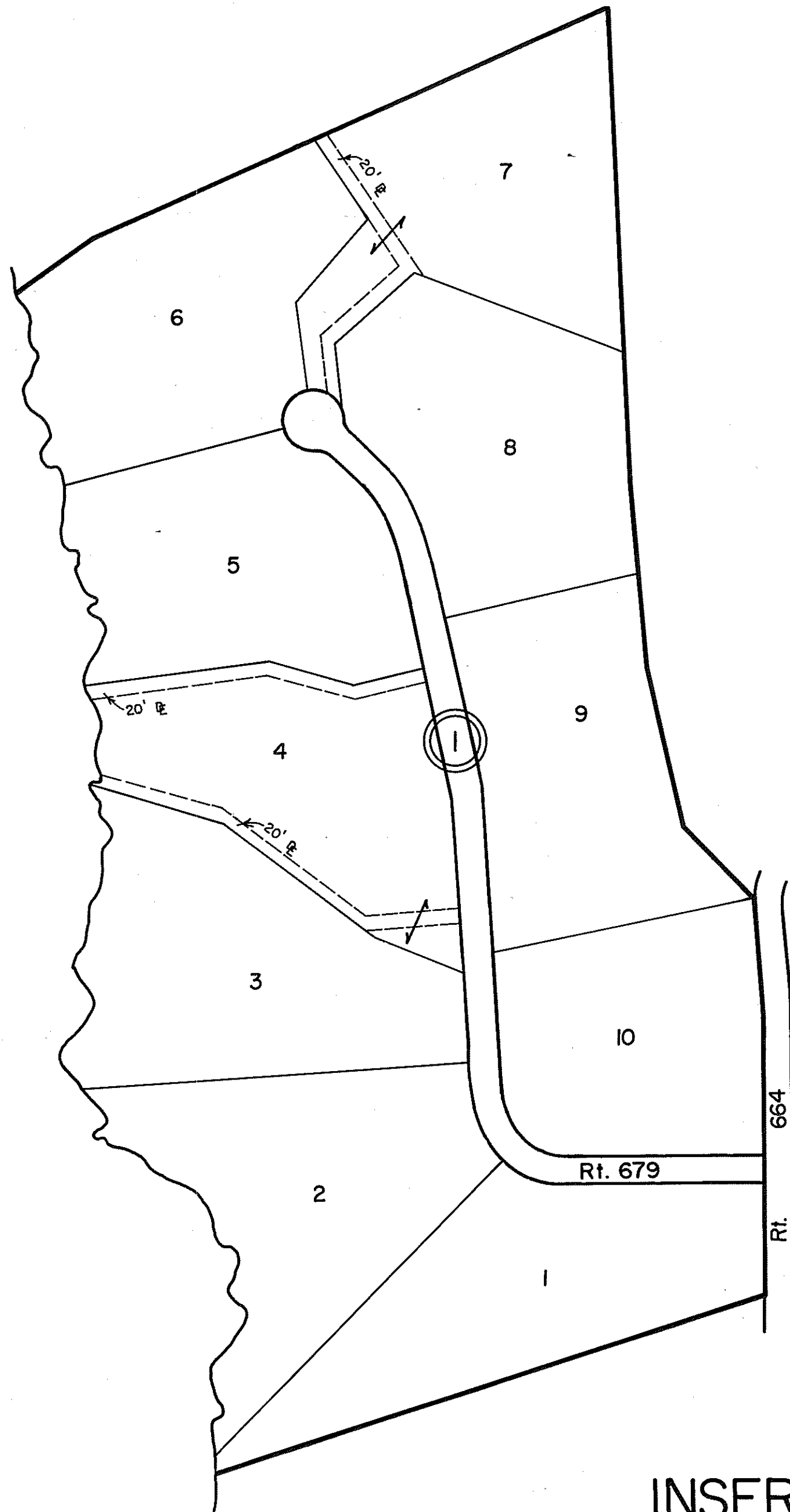


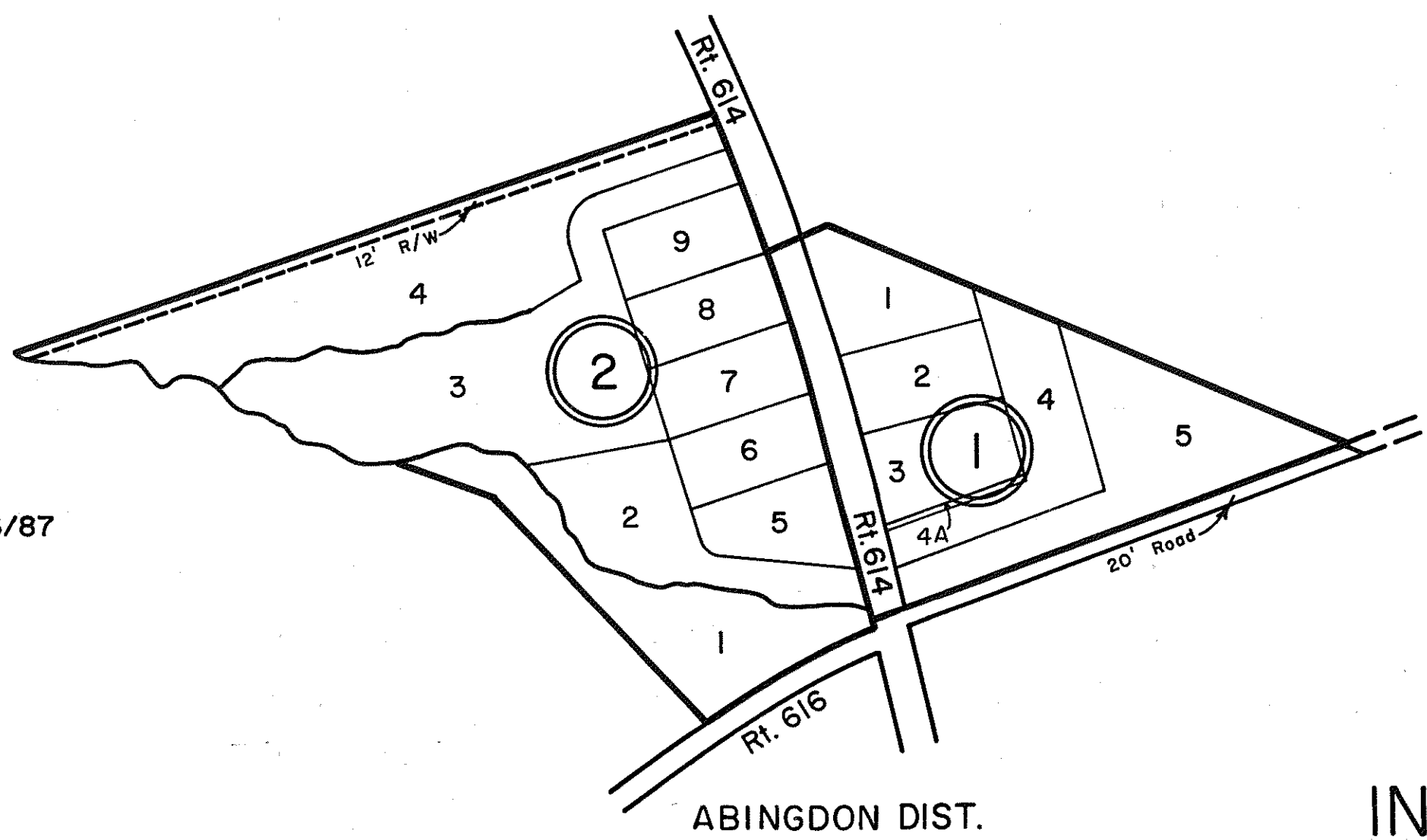
GLOUCESTER COUNTY

① FOX MILL-LOTS 1-10-P.B.14, Pg. 26



① DEER RUN-LOTS 1-4 & 39-43-P.B. 20, Pg. 173
 ② DEER RUN-LOTS 5-38-P.B. 20, Pgs. 387 & 387A

① KINGSWOOD FARMS-LOTS 1-5-P.B. 18, Pg. 89
 LOT 4A P.B. 21, Pg. 339, REV. 2/16/87
 ② MILLER'S FARM SUB.-LOTS 1-9-P.B. 20, Pg. 220



REVISED 12/31/83/84/87/91/92
 SCALE IN FEET
 0 600 1200 1800 2400
 200 0 200 400 600 800

ABINGDON
 WARE DISTRICT

SECTION
 INSERT 3IE,F,G