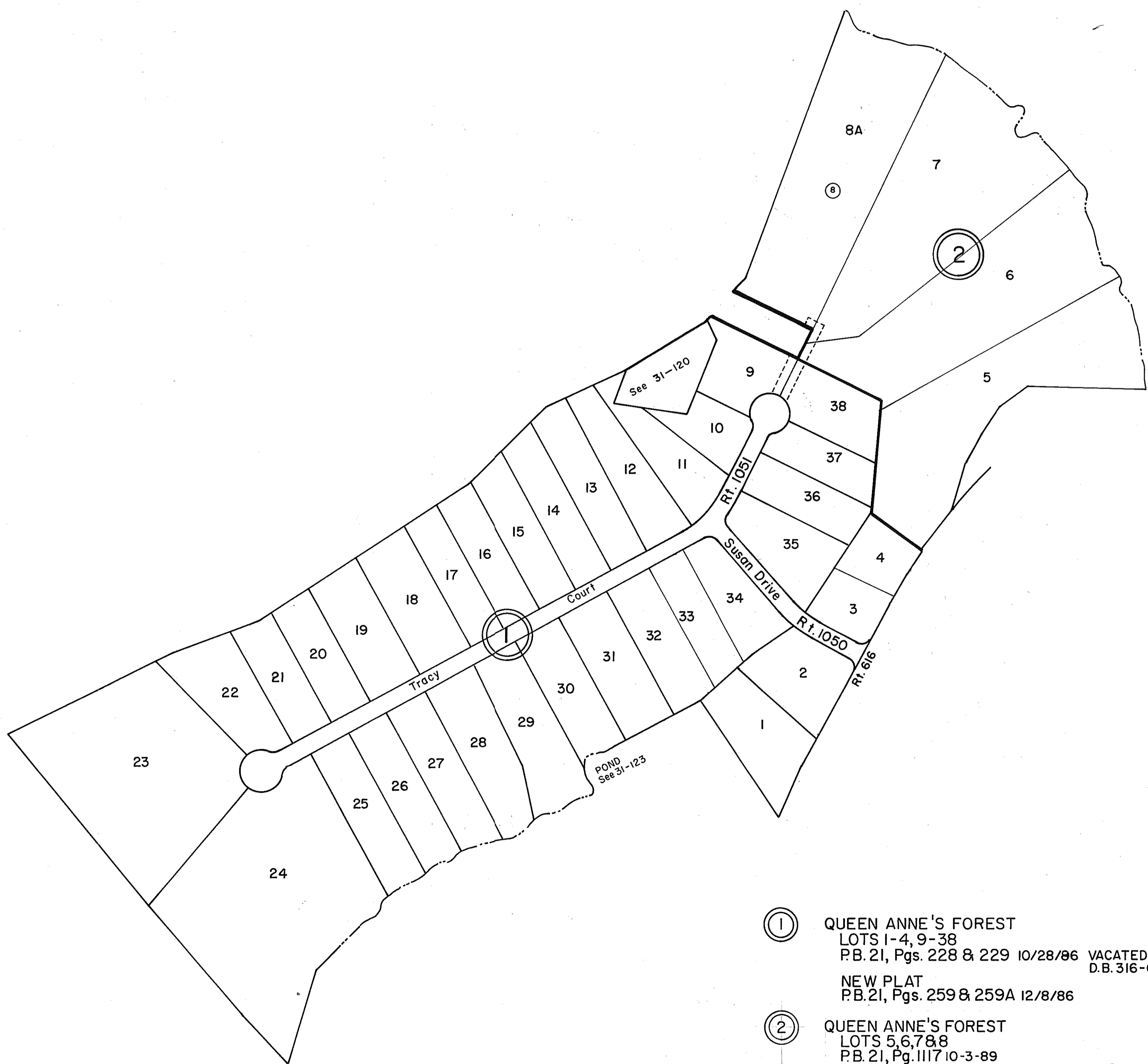
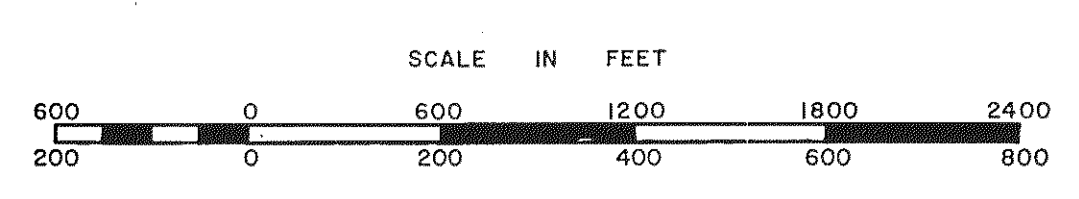


GLOUCESTER COUNTY



- ① QUEEN ANNE'S FOREST
LOTS 1-4, 9-38
P.B. 21, Pgs. 228 & 229 10/28/86 VACATED
D.B. 316-693 12/86
NEW PLAT
P.B. 21, Pgs. 259 & 259A 12/8/86
- ② QUEEN ANNE'S FOREST
LOTS 5, 6, 7 & 8
P.B. 21, Pg. 1117 10-3-89
LOT 8 REVISED P.B. 22, Pg. 5 1/4/90 &
P.B. 22, Pg. 607 9/21/92



WARE DISTRICT

SECTION INSERT 31J