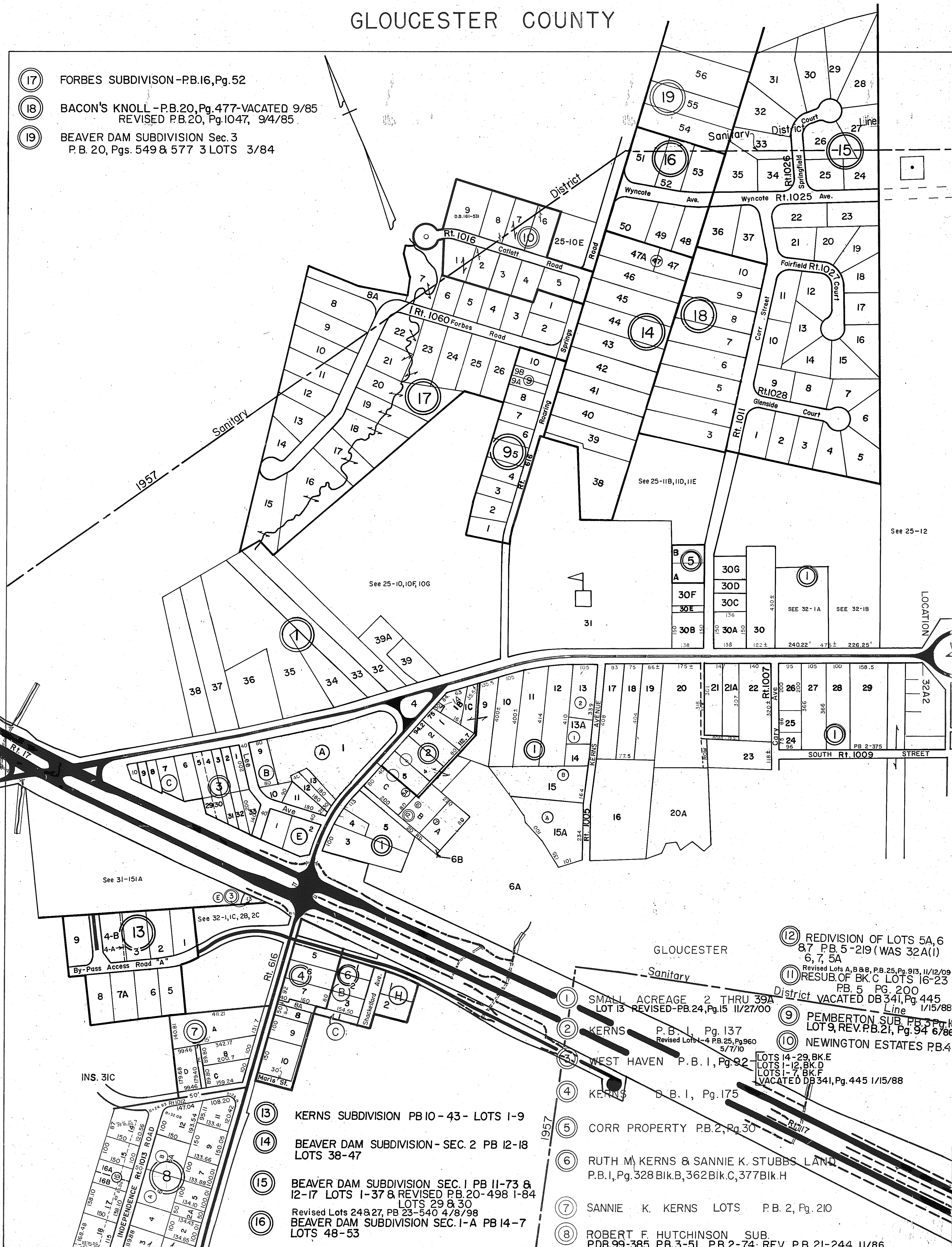


# GLOUCESTER COUNTY

- (17) FORBES SUBDIVISION - P.B. 16, Pg. 52
- (18) BACON'S KNOLL - P.B. 20, Pg. 477 - VACATED 9/85  
REVISED P.B. 20, Pg. 1047, 9/4/85
- (19) BEAVER DAM SUBDIVISION Sec. 3  
P. B. 20, Pgs. 549 & 577 3 LOTS 3/84



SCALE IN FEET

WARE DISTRICT

INSERT 32A PART I

PREPARED BY - THE DEPARTMENT OF TAXATION, DIVISION OF APPRAISALS & MAPPING.

- (12) REDIVISION OF LOTS 5A, 6, 7, 5A  
PB. 5 - 219 (WAS 32A(1))
- (11) RESUB. OF BK. C LOTS 16-23  
PB. 5 PG. 200  
District VACATED DB 341, Pg. 445  
Line 1/15/88
- (9) PEMBERTON SUB. PB. 3 Pg. 132  
LOT 9, REV. P.B. 21, Pg. 94 6/88
- (10) NEWINGTON ESTATES P.B. 4 Pg. 118
- (1) SMALL ACREAGE 2 THRU 39A  
LOT 13 REVISED - P.B. 24, Pg. 15 11/27/00
- (2) KERNS P.B. 1, Pg. 137  
Revised Lots 1-4 P.B. 25, Pg. 960  
5/7/10
- (3) WEST HAVEN P.B. 1, Pg. 92
- (4) KERNS B.B. 1, Pg. 175
- (5) CORR PROPERTY P.B. 2, Pg. 30
- (6) RUTH M. KERNS & SANNIE K. STUBBS LAND  
P.B. 1, Pg. 328 Bik. B, 362 Bik. C, 377 Bik. H
- (7) SANNIE K. KERNS LOTS P.B. 2, Pg. 210
- (8) ROBERT F. HUTCHINSON SUB.  
P.B. 99-385 P.B. 3-51, P.B. 2-74 REV. P.B. 21-244 11/86