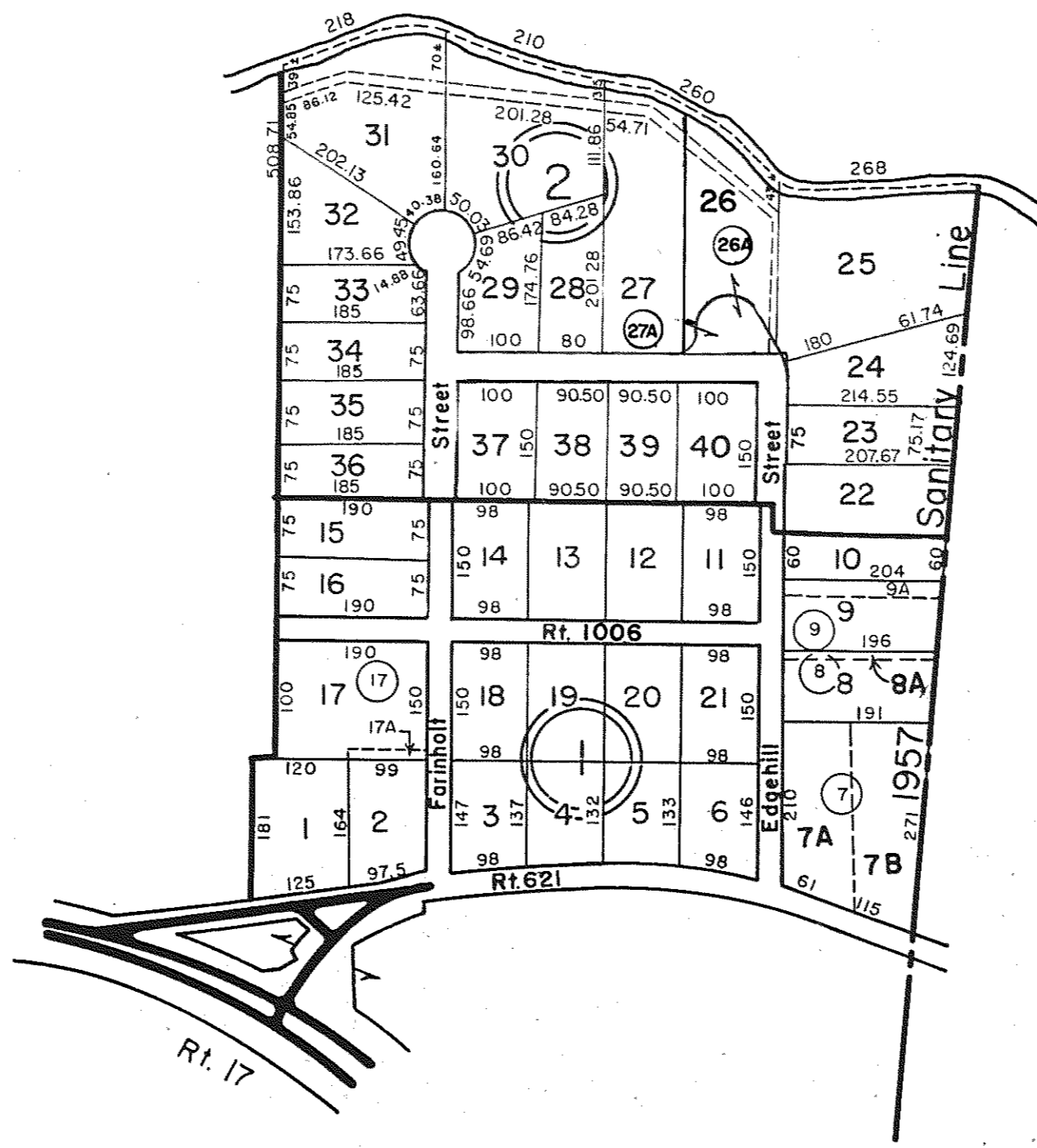
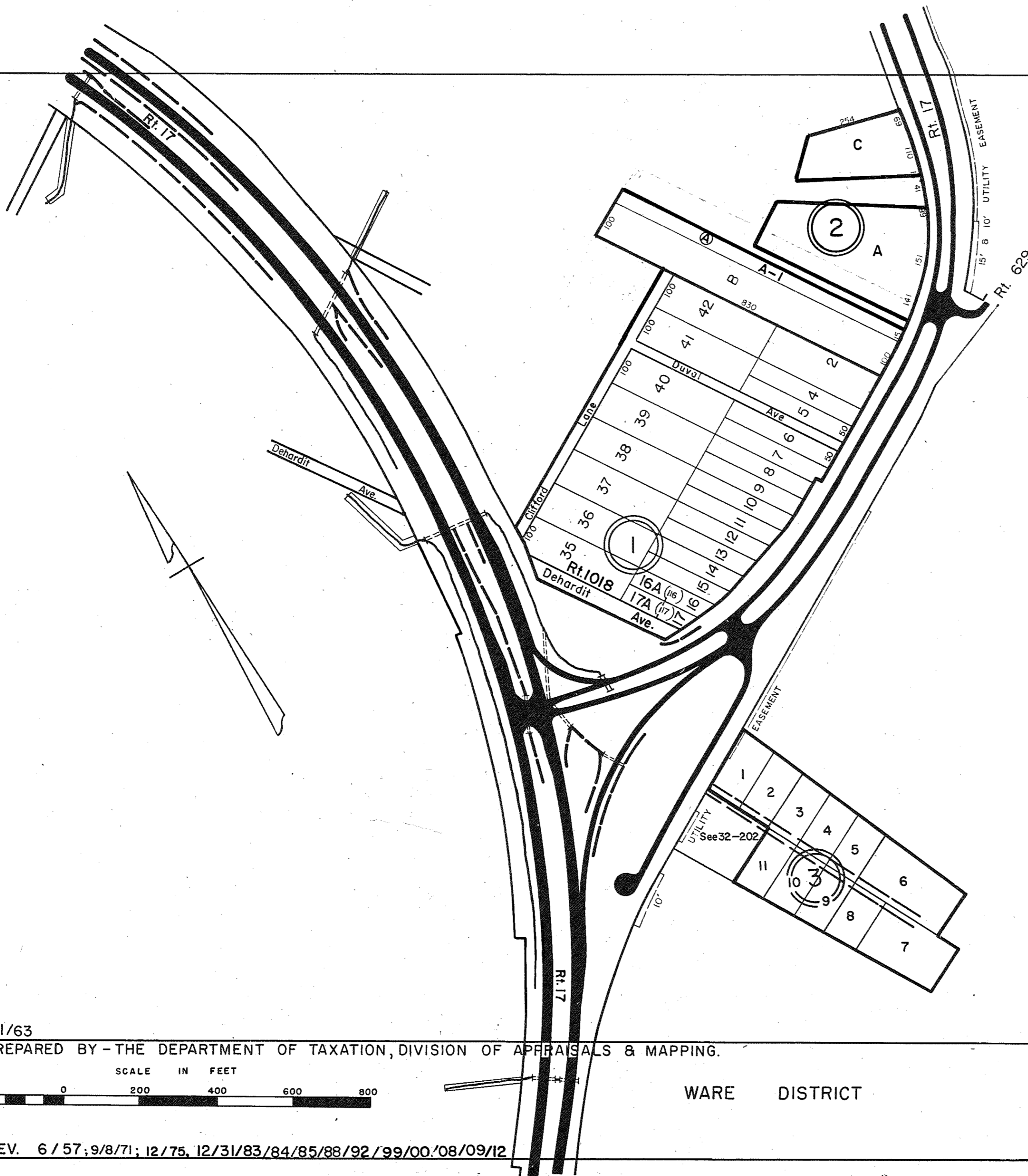


GLOUCESTER COUNTY



- ① EDGE. HILL - P.B. 1, Pg. 201
- ② FAIRVIEW PARK - D.B. 122, Pg. 303  
& P.B. 17, Pg. 96

INSERT 32B



- ① CLIFFORD TERRACE - P.B. 1, Pg. 95, PB. 6-76  
PB. 23, Pgs. 387 & 387A, 12/10/99  
P.B. 1, Pg. 162, PB. 20-959
- ② J.T. DUVAL PROPERTY - P.B. 1, Pg. 305  
D.B. 97, Pg. 403 & PB. 6-76
- ③ MARION O. & MARY P. SUTTON PB. 3, Pg. 218  
PB. 25, Pg. 785, 8/13/08

INSERT 32C

1/63

PREPARED BY - THE DEPARTMENT OF TAXATION, DIVISION OF APPRAISALS & MAPPING.



WARE DISTRICT

INSERT 32B & 32C