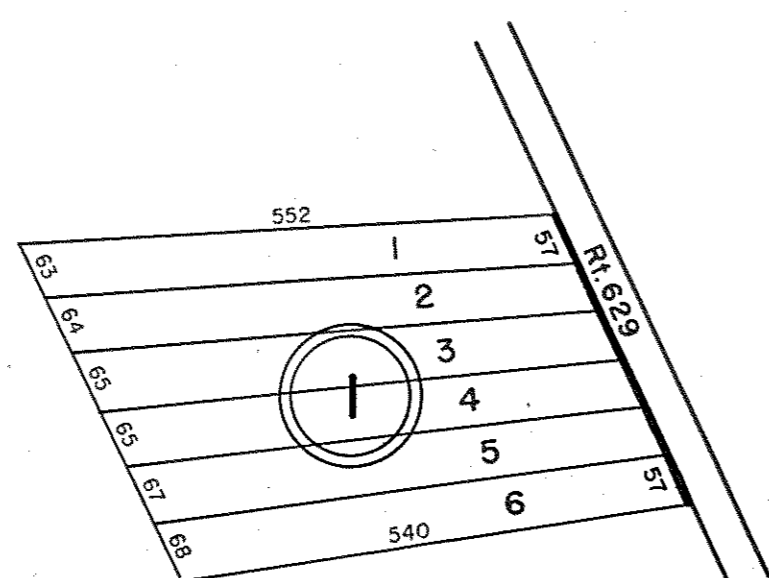


GLOUCESTER COUNTY



① STEPHEN THORNTON EST. D.B. 104, Pg. 467

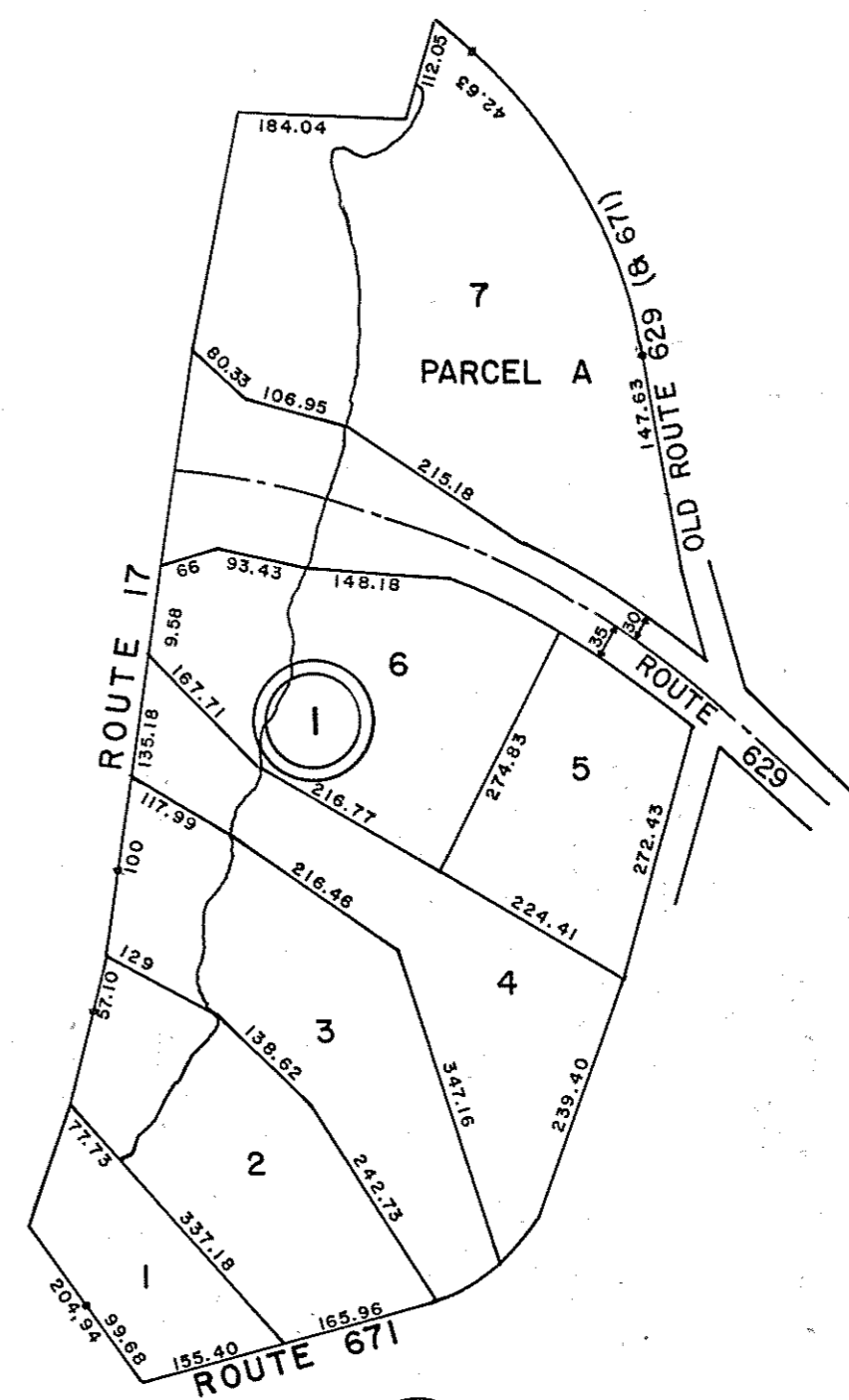
ABINGDON DISTRICT

INSERT 32D

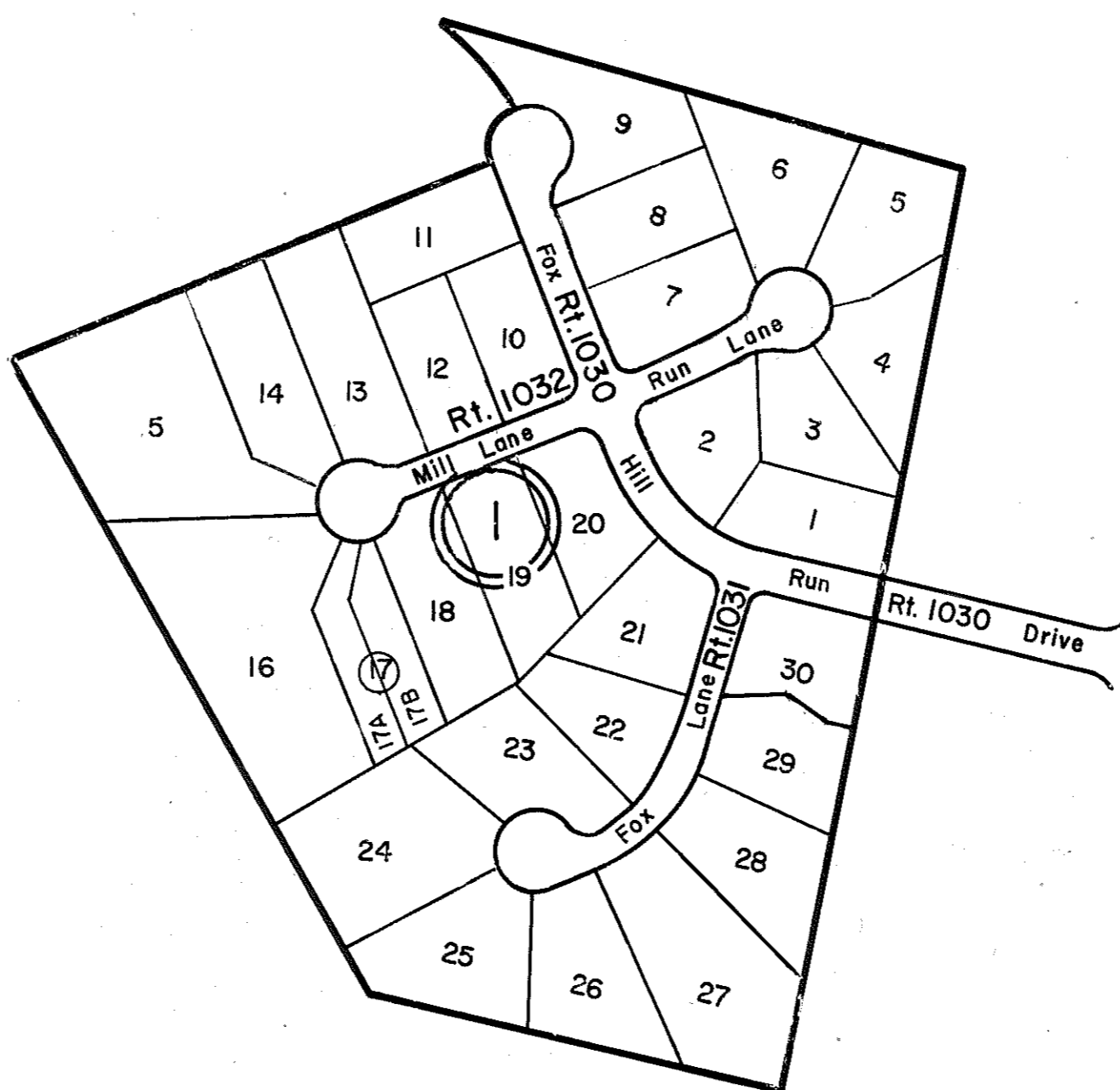
REV. 12/76

WARE DISTRICT

INSERT 32F



① WILLIAM REX HINKLE LOTS
P.B. 10, Pg. 26



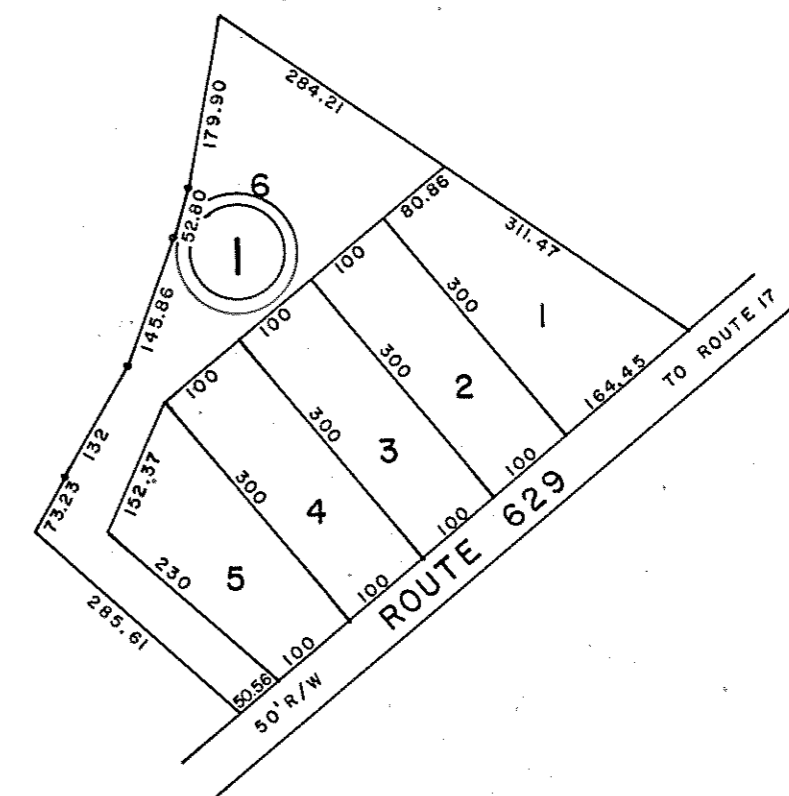
① FOX MILL RUN — P.B. 15, Pg. 76
& P.B. 20, Pg. 2

WARE DISTRICT

INSERT 32H

REV. 12/76 ABINGDON DISTRICT

INSERT 32G



① AIREVILLE SUBDIVISION
SECTION I, P.B. 10, Pg. 65

REV. 1/75, 12/76, 3/25/80, 12/31/83/84/85/86/91/92/12



WARE & ABINGDON DISTRICT

INSERT 32D,F,G,H

VIRGINIA STATE DEPARTMENT OF TAXATION, DIVISION OF REAL ESTATE APPRAISAL AND MAPPING